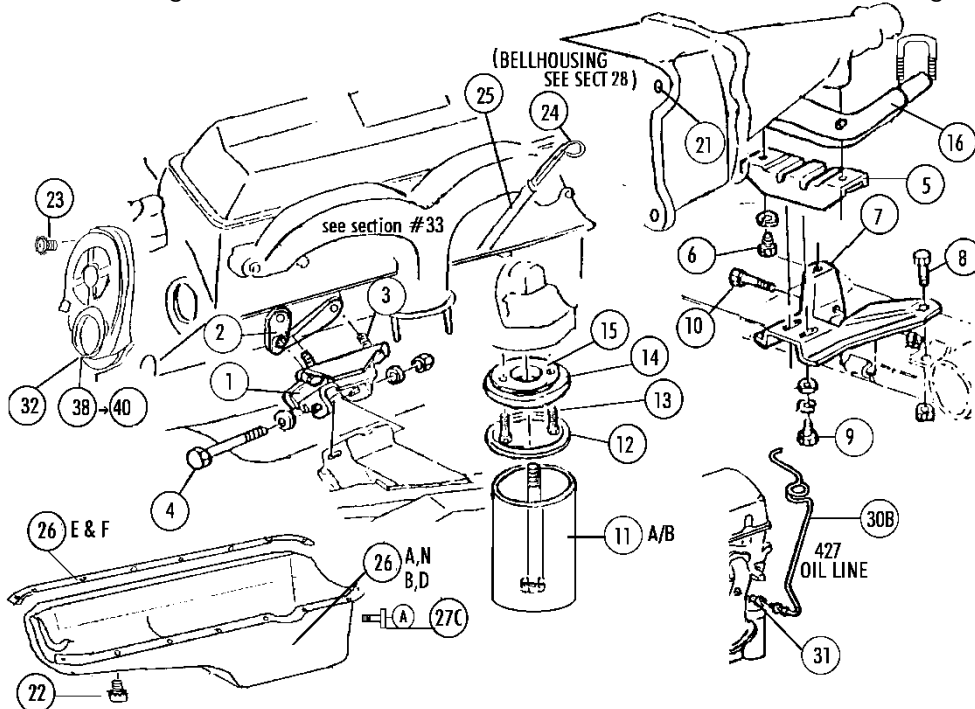


Section 38 Engine & Trans Mounts • Oil Filter – Oil Pans - Oil Lines & Fittings, Engine & Oil Plugs • Dipsticks • Timing Chains



Sec-part	Name	Year	#need/car	price
38-01A	Engine Mount (orig type) (1) (USA)	63-7	2	\$ 30.00 Each
38-02	Shim- Engine Mount 427 A/C (1)	66-7	2	10.00 Each
38-03	Engine Mount Bolts (6 Pc) (E HDMK)	63-7	1 SET	12.00 Set
38-04A	Engine Mount Bolt Set (replacement)	63-7	1 SET	4.50 Set
38-04B	Engine Mount Bolt Set (UR Headmark)	63-5	1 SET	12.00 Set
38-04C	X Engine Mount Bolt Set (A Hdmk) -Use 38-04A X	66-7	1 SET	N/A
38-05	Transmission Mount (manual + Auto Trans)	63-7	1	12.00
38-06	Trans Mount Bolts & Lw (2 + 2)	63-7	1 SET	2.00 Set
38-07	Transmission Mount Bracket	63-7	1	49.00
38-08	Trans Mount Bkt Bolts, Nuts & Washers Set (2 Ea) repl.	63-7	1 SET	2.50 Set
38-09	Trans Mount To Bkt Bolt, washer & Spacer Set(2 Ea)	63-7	1 SET	4.75 Set
38-10	Lower Trans Mount Bolt & Nut	63-7	1	1.25
38-11A	Oil Filter Can (silk Screened) (w/filter&gasket)	63-7	1	\$ 102.00
38-11B	Oil Filter Element W/gasket (for Orig Can)	63-7	1	14.50
38-12	Oil Filter Can Gasket	63-7	1	3.00
38-13	Oil Filter Adapter Bolts (pr)	63-7	1 PR	1.50 Pair
38-14	Oil Filter Adapter Valve W/gasket (for Orig Type)	63-7	1	40.00
38-15	Adapter Valve Gasket	63-7	1	4.00
38-19,20	Clutch Bell Housing Bolts (see Sect 28-55), Inspection Plate Bolts (see 28-50)			
38-21	Trans To Bellhousing Bolts & Lw (TR)(4 Ea)	63-7	1 SET	10.00 Set
38-22A	Oil Pan Bolt Set (327)(18 Pc) (L + E)	63-7	1 SET	\$ 20.00 Set
38-22B	Oil Pan Bolt set (396/427)(23 Pc) (L + E)	65-7	1 SET	20.00 Set
38-23A	Timing Chain Cover Screws (327)(10 Pc) (E)	63-7	1 SET	7.50 Set
38-23B	Timing Chain Cover Screws (396/427)(10 Pc) (E)	65-7	1 SET	7.50 Set
38-23C	Dowel Pin- Timing Chain Cover 327 (pr)	63-7	1 PR	2.50 Pair
Dipsticks L&M correct handle, rivets, debossed/embossed I, ADD, FULL, ENGINE ...				
38-24L	Dipstick, Chrome handle, 63 hiper (aft nov62)	63	1	\$ 63.00 each
38-24M	Dipstick, Black 63 250-300hp & 63 hiper bef Nov62	63	1	55.00
38-24C	Dipstick 327 (250-300hp)(black Tip/no Dimple)	65-6	1	35.00
38-24D	Dipstick 327 (hiper)(chrome/black Tip/no Dimple)	65-6	1	35.00
38-24E	Dipstick 327 (67 327 ALL)(unplated/black Tip)	67	1	35.00
38-24F	Dipstick 396/427 (correct w pink Tip, no Dimple)	65-7	1	\$ 35.00

Sec-part	Name	Year	#need/car	price
38-24G	Dipstick (64 hiper)(chrome)	64	1	27.00
38-24H	Dipstick (64 327/250-300hp)(unplated)	64	1	22.00
38-24J	Dipstick REPAIR Kit 327(Rubber Boot & Black Tip)	65-7	1	14.00
38-24K	Dipstick REPAIR Kit 396/427 (Boot & Pink Tip)	65-7	1	14.00
38-25A	Dipstick Tube 327 All (8")	63-4	1	15.00
38-25B	Dipstick Tube 327 All (9")	65-7	1	9.00
38-25C	Dipstick Tube 396/427	65-7	1	23.00
38-25D	Lower Dipstick Guide Tube (327)	63-7	1	10.00
Oil Pans (#38-26A=C Replacement=drain On Side Not Back) #38-26N = Correct drain on back				
38-26A	Oil Pan 327 (250,300,350hp)(4 Qt)(replacement)	63-7	1	\$ 115.00
38-26C	Oil Pan 327 (300,350hp) (4 Qt)(replacement) a=c	66-7	1	115.00
38-26N Oil Pan 327 (250,300,350hp)(4 Qt) Correct w "A" Drain Plug 63-7 \$ 315				
38-26B	X Oil Pan 327 (63 340hp, 64-65 365-375hp)(5 Qt) GM359942	X		discontinued
38-26D	X Oil Pan (396/427)With Correct Reinforc&Windage Tray	65-7	1	discontinued
38-26E	Gasket (327 Oil Pan)(4 Pc)	63-7	1 SET	36.00 Set
38-26F	Gasket (396/427 Oil Pan)(4 Pc)	65-7	1 SET	32.00 Set
38-26G	Reinforcements Only- 396/427 Oil Pan	65-7	1 SET	24.00 Set
38-26J	X Oil Pan Baffle (windage Tray)(327/340-375)	63-5	1	n/a
38-26K	Oil Pan Baffle (windage Tray)(396/427)	65-7	1	25.00
38-26L	X Studs For Windage Tray (327/340-375hp)(5) x	63-5	1 SET	n/a
38-26M	X Studs For Windage Tray (396/427)(5)	65-7	1 SET	N/A
38-27B	Oil Drain Plug SEAL (white)	63-7	1	1.00
38-27C	Oil Drain Plug & Seal (A Headmark)	63-7	1	10.00
38-27D	Magnetic Oil Drain Plug & Seal (correct Hdmk A)	63-7	1	15.00
38-28A	Transmission Drain Plug	63-7	1	4.50
38-29	Engine Square Plug 396 & 427	65-7	1	5.50
38-30A	Oil Pressure Line & Fittings (327 No FI)(prebent 327 =Prebent Copper Coated Steel -yes Magnetic)	63-7	1	24.00
38-30B	Oil Pressure Line (coiled) & Fittings (65-7 396/427) steel/magnetic			29.00
38-30C	Fittings (2) And Adapter (1) (for All Oil Lines)	63-7	1 SET	6.50 Set
38-30D	F.I. Oil Line Kit (prebent)(NCRS Correct)	63-5	1	49.00
38-31A	Oil Pressure Line Bushing (396/427)(425-435hp)	65-7	1	4.50
38-31B	Oil Pressure Line Elbow (427 Auto Only)(use With 38-31C)	67	1	8.00
38-31C	Oil Pressure Line Bushing 427/390-400hp	66-7	1	3.50
Timing Chain covers with welded Tab/ see photos online (all have dowel holes)				
38-32A	Timing Chain Cover (327) 63-67 250-300hp correct Tab	63-7	1	\$ 75.00
38-32B	Timing Chain Cover 66-67 327 Hiper with Correct Tab	66-7	1	68.00
38-32B3	Timing Chain Cover 63 327 Hiper with Correct Tab	63	1	68.00
38-32B4	Timing Chain Cover 64-65 327 Hiper With Correct Tab	64-5	1	68.00
38-32C	Timing Chain Cover W Tab 65 396/425 66 427/425hp	65-6	1	68.00
38-32D	Timing Chain Cover W Tab 66 427/390hp	66	1	68.00
38-32E	Timing Chain Cover W Tab 67 427/390-400hp	67	1	68.00
38-32F	X Timing Chain Cover W Tab 67 427/430-435hp	67	1	N/A
38-33A	Front Seal (327 Timing Chain Cover Round Seal)	63-7	1	15.00
38-33B	Front Seal (396/427 T/C Cover Round Seal)	65-7	1	15.00
38-34A	Gasket (327 Timing Chain Cover)	63-7	1	6.00
38-34B	Gasket (396/427 Timing Chain Cover)	65-7	1	10.00
38-35A	Oil Pickup & Screen (327) (4 Qt pan)	63-7	1	25.00
38-35B	Oil Pickup & Screen (396/427)	65-7	1	32.00
38-35E	X 327 Oil Pickup Installation Tool	-	1	N/A
38-35F	427 Oil Pickup Installation Tool		1	8.00
38-36A-F	X Oil Pumps - no	63-7	1	N/A
38-36F	Oil Pump Bolt (327)	63-7	1	2.00
38-36G	Oil Pump Bolt (396/427)	65-7	1	2.50
38-37A	Oil Pump Shaft (327) x	63-7	1	N/A
38-37B	Oil Pump Shaft (427)	65-7	1	20.00
38-39	Timing Chain Gear - look online			
38-41A	Rear Main Seal- 327 (2 Pc)	63-7	1	46.00 Pair
38-41B	Rear Main Seal- 396/427 (2 Pc) x	65-7	1	N/A
38-42A	Timing Tab only 63-7 327/250-300hp	63-7	1	12.00
38-42B	Timing Tab only, 66-67 327 hiper	66-7	1	12.00
38-42B3	Timing Tab only, 63 327 hiper	63	1	12.00
38-42B4	Timing Tab only 64-65 327 hiper	64-5	1	12.00
38-42C	Timing Tab only, 65 396/425, 66 427/425hp	65-6	1	12.00
38-42D	Timing Tab only 66 427/390-400hp	66	1	12.00
38-42E	Timing Tab only - 67 427/390-400 hp	67	1	12.00
38-42F	Timing Tab only - 67 427/430-435hp	67	1	12.00