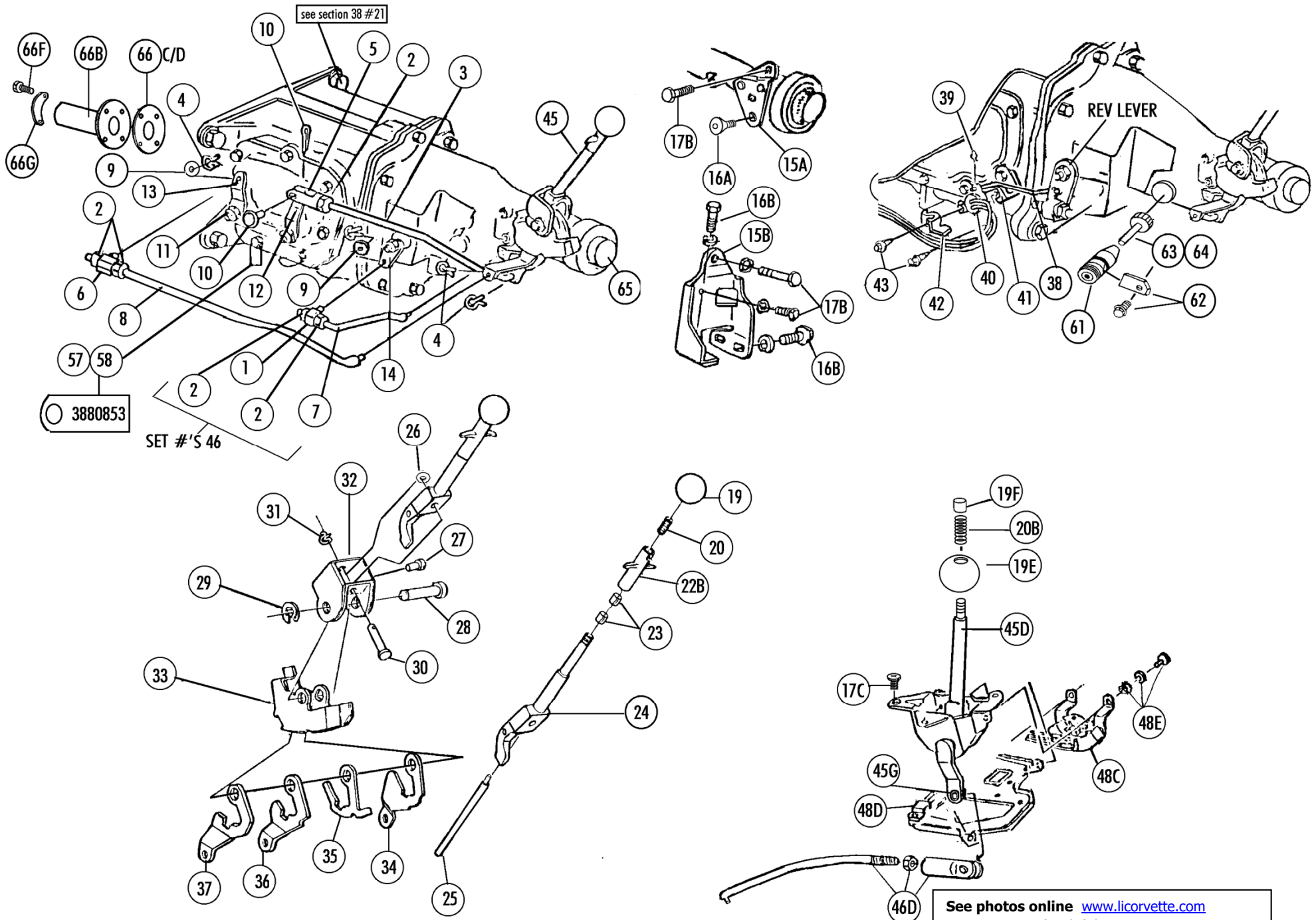


Section #32 Shifter And Linkage - BU Light Switch - Speedo Gears, Trans Kits, Seals & Tags



See photos online www.licorvette.com
 See section 15 for shift boots
 Section 38 for transmission parts, trans mounts...

Section #32 Shifter And Linkage - Bu Light Switch - Speedo Gears , Trans Kits, Seals & TransmTags

Sec-Part#	Name	Year	#need/Car	Price	Inc
32-01	Long Swivel-on Reverse shift rod	64-7	1	7.00	
32-02	Shift Rod Nut (1)	64-7	5	1.50	Each
32-03	Shift Rod With Clevis- 1&2	64-7	1	28.00	
32-04	J Clips (5 Pc), shifter	64-7	1 SET	3.25	Set
32-05	Clevis (for 1&2 shift rod)	64-7	1	10.00	
32-06	Swivel-for 3&4 shift rod	64-7	1	7.00	
32-07	Shift Rod- Reverse	64-7	1	20.00	
32-08	Shift Rod- 3&4	64-7	1	20.00	
32-09	Washers for Shift Swivel (2)	64-7	1	0.50	Pair
32-10	Clevis Pin & Cotter Pin	64-7	1	2.00	
32-11A	Nuts (3) For Shift Levers On Transmission	64-7	1 SET	1.00	Set
32-11B	Shifter Shaft Seal (1) For Muncie Transmission	63L-7	3	9.00	Each
32-11D	Spring, Trans Shifter Cam Detent	63L-7	1	5.00	
32-12	Shift Lever On Transmission- 1&2	64-7	1	13.00	
32-13	Shift Lever On Transmission- 3&4	64-7	1	13.00	
32-14	Shift Lever On Transmission- Reverse	64-7	1	13.00	
32-46E	Shifter Linkage Set 64-7 4 Spd (#'s 1-14)	64-7	1	\$ 70.00	
32-15A	Shifter Mounting Bracket (with 3 Screws)	64-6E	1	24.00	
32-15B	Shifter Mounting Bracket (after 10/22/65) \$	66-7	1	39.00	
32-16A	Shifter Bracket Screw Set (set Of 3)	64-5	1 SET	3.50	Set
32-16B	Shifter Bracket Bolt Set	66-7	1 SET	2.50	Set
32-17A	Shifter Mounting Bolt Set (63 All, 64 Auto)	63-4	1 SET	4.00	Set
32-17B	Shifter Mounting Bolt Set	64-7	1 SET	1.75	Set
32-17C	Mounting Screw Set (3 Pc), Auto Shifter 65-7	65-7	1 SET	2.25	Set
32-19A	Black knob, 63 4 Spd shifter	63	1	9.00	
32-19B	Black Knob, 63 Auto Shifter	63	1	9.00	
32-19C	Chrome Knob, 64 shifter Auto	64	1	35.00	
32-19D	Chrome Knob, 64-67 4 Spd Shifter	64-7	1	15.00	
32-19E	Black Knob, 65-7 Auto shifter	65-7	1	20.00	
32-19F	Chrome Button, for 65-7 Shifter knob Auto	65-7	1	10.00	
32-20A	Reverse Lockout Spring 4 Spd	64-7	1	5.00	
32-20B	Auto Shifter Lockout Spring (NOS)	65-7	1	5.00	
32-22A	Reverse Lockout Handle & Spring	63	1	57.00	
32-22B	Reverse Lockout T Handle & Rod	64-7	1	22.00	
32-23	Shifter T Bushings (2)	64-7	1 PR	2.50	Pair
32-24	Shifter Chrome Shaft	64-7	1	129.00	
32-25	Shifter Reverse Lockout Rod	64-7	1	4.75	
32-26A	Shifter Clevis Spring Washer (63=3,63-4 Pg=1)	63-4	1-3	1.00	Each
32-26B	Spring Washer For Shifter	64-7	1	2.00	
32-27	Reverse Lockout Pin	64-7	1	3.50	
32-28	Shifter Pivot Shaft	64-7	1	7.25	
32-29	Shifter Shaft Clip	64-7	1	1.00	
32-30	Shifter Shaft Pin	64-7	1	7.50	
32-31	J Clip	64-7	1	0.50	
32-32	Shifter Upper Housing	64-7	1	35.00	
32-33	Shifter Lower Housing	64-7	1	19.00	
32-34	Shifter Lever Reverse	64-7	1	14.00	
32-35A	Shifter Reverse Lockout (5/64")	64-7	1	8.00	
32-35B	Shifter Reverse Lockout (7/64")	64-7	1	8.00	
32-36	Shifter Lever 1&2	64-7	1	14.00	
32-37	Shifter Lever 3&4	64-7	1	14.00	
32-38	Back Up Light ROD with Clips (#39)	63L-7	1	6.50	
32-39	Back Up Light Rod Clips (1 Pr)	63L-7	1 PR	0.50	Pair
32-40	BU Light Switch 4 Spd (OEM/USA)	63L-7	1	66.00	
32-41	Bracket, for Back up light switch	63L-7	1	11.00	
32-42	Shield for Back up light switch	63L-7	1	9.00	
32-43	Bolts & Lw (2 Ea) (P hdmk) for BU light switch	63L-7	1 SET	1.50	Set
32-44A	63 Shifter Adjust Gauge & Instructions	63	1	6.00	
32-44B	Shifter Adjust Gauge & Instructions	64-7	1	2.00	
32-45A	Shifter , 63 4 Spd With black knob	63	1	430.00	
32-45B	Shifter- 63 Auto With Black Knob	63	1	290.00	
32-45C	Shifter- 64 Auto With Chrome Knob	64	1	299.00	
32-45D	Shifter- 65-67 Auto With Knob	65-7	1	350.00	
32-45E	Shifter, 64-67 4 Spd With Knob	64-7	1	230.00	
32-45F	Auto Shifter Bushings (2)	65-7	1	10.00	Pair
32-45G	Auto Shifter Rubber Grommet (to Linkage)	65-7	1	12.00	
32-45H	Antirattle Spring (on bottom of 63 shifter)	63	1	7.50	
32-46A	Shifter Linkage 63 BORG WARNER 4 Spd	63	1	120.00	
32-46B	Shifter Linkage 63 Muncie 4 Spd	63	1	120.00	
32-46C	Shifter Linkage 63-64 Auto	63-4	1	45.00	
32-46D	Shifter Linkage 65-67 Auto	65-7	1	45.00	
32-46E	Shifter Linkage Set 64-7 4 Spd (#'s 1-14)	64-7	1	\$ 70.00	
32-48A/b/c	Shifter Linkage Set 64-7 4 Spd (#'s 1-14)	64-7	1	\$ 70.00	
32-48B	Auto Neutral Safety Switches - NOT AVAILABLE see swapmeet page or ebay				
32-48C	S Clip For 65-67 Auto N/S-B/U Switch Wires	65-7	1	8.50	
32-48E	Switch Screws (pr) (65-67 neutral safety/backup)	65-7	1 PR	1.00	Pair
32-48F	Rod & Swivel For 63-64 N/S Or N/S-B/U Switch	63-4	1	15.00	
32-48G	Bolts, washers & Clip For N/S Or B/U Switch Mount	63-4	1 SET	4.50	Set
32-57A	Warner Trans Tag 3819107w T-10 3 Spd (63E before #12000)	63E	1	25.00	
32-57B	3839724w T-10 4 Spd(wr)(250-300hp Before #12000)	63E	1	25.00	
32-57C	3839723w T-10 4 Spd(cr)(340-360hp Before #12000)	63E	1	25.00	
32-58A	3839715 Muncie Trans Tag 3 Spd (after #12000)	63L	1	25.00	
32-58B	3831703 Muncie 4 Spd(wr)(250-300hp After #12000)	63L	1	25.00	
32-58C	3831701 Muncie 4 Spd(cr)(340-360hp After #12000)	63L	1	25.00	
32-58D	3855707 3 Spd Muncie Trans Tag	64	1	25.00	
32-58E	3839602 4 Spd (wr)(250-300hp) Muncie Trans Tag	64	1	25.00	
32-58F	3839601 4 Spd (cr)(365-375hp) Muncie Trans Tag	64	1	25.00	
32-58G	3855707 3 Spd (250hp)muncie Trans Tag	65	1	25.00	
32-58H	3857580 4 Spd M20 (wr)(250-300hp) Tag	65	1	25.00	
32-58I	3857573 4 Spd M20(cr)(365-375hp)muncie Trans Tag	65	1	25.00	
32-58K	3857579 4 Spd M20 (cr)(350hp) Muncie Trans Tag	65	1	25.00	
32-58L	3857581 4 Spd M20 (cr)(396/425hp) Muncie Tag	65	1	25.00	
32-58M	3860097 3 Spd (300hp) Muncie Trans Tag	66	1	25.00	
32-58N	3870354 4 Spd M20 (wr)(300) Muncie Trans Tag	66	1	25.00	
32-58P	3880853 4 Spd M21 (cr)(350) Muncie Trans Tag	66	1	25.00	
32-58Q	3879987 4 Spd M22 (425hp) Muncie Trans Tag	65-6	1	25.00	
32-58R	3860097 3 Spd (300hp) Muncie Trans Tag	67	1	25.00	
32-58S	3870354 4 Spd M20 (wr)(300) Muncie Trans Tag	67	1	25.00	
32-58T	3880853 4 Spd M21 (cr)(350hp) Muncie Trans Tag	67	1	25.00	
32-58U	3880855 4 Spd M21 (cr)(390,400,435) Muncie Trans Tag	67	1	25.00	
32-58V	3879987 4 Spd M22 (430hp-L88) Muncie Trans Tag	67	1	25.00	
32-58W	3879986 4 Spd M22 (365-375hp) Muncie Trans Tag	65	1	25.00	
32-58X	3880855 4 Spd M21 (cr)(390-425) Muncie Trans Tag	66	1	25.00	
32-59A	Transmission Gasket Set (9 Pc) Warner T-10	63E	1	20.00	
32-59B	Transmission Gasket Set (10 Pc) Muncie	63-7	1 SET	24.00	Set
32-61	Speedo Gear Round Fitting & Seal	63-7	1	21.00	
32-62	Speedo Gear Fitting Retainer & Screw	63-7	1	5.00	
32-63	Speedo Steel Drive Gear (3.08-3.55 Rear)	63-7	1	44.00	
*32-63a,b,c,d,e Must Be Used With 32-63 Drive Gear.					
> If speedo reads too high, a gear with 1 more tooth will Slow It Down 5mph					
32-63A	Speedo Driven Gear (brown)(18 Teeth)(3.08 Rear)	63-7	1	12.50	
32-63B	Speedo Driven Gear (natural)(19 Teeth)	63-7	1	12.50	
32-63C	Speedo Driven Gear (blue)(20 Teeth)(3.36 Rear)	63-7	1	12.50	Each
32-63D	Speedo Driven Gear (21 Teeth)(3.55 Rear) red	63-7	1	12.50	Each
32-63E	Speedo Driven Gear (silver)(22 Teeth)	63-7	1	12.50	
32-64	Speedo Steel Drive Gear (3.70-4.11 Rear)	63-7	1	49.00	
32-64A	Speedo Driven Gear (green)(22 Teeth)(3.70 Rear)	63-7	1	12.50	
32-64B	Speedo Driven Gear (black)(23 Teeth) x	63-7	1	N/A	
32-64C	Speedo Driven Gear (24 Teeth)(4.11 Rear)	63-7	1	12.50	
32-64D	Speedo Driven Gear (orange)(25)(4.56 Rear) X	63-7	1	N/A	
*32-64a,b,c,d,e Must Be Used With 32-64 Drive Gear					
32-64E	If Speedo Reads Too High, A Driven Gear With One More Tooth Will Slow It Down Approximately 5 Mph				
32-65	Transmission Rear Yoke Seal	63-7	1	9.75	
32-65B	Bushing- Transmission Rear Main	63-7	1	5.50	
32-66	Transmission Front Main Shaft Bearing (muncie) X	63L	1	N/A	
32-66A	Transmission Front Main Shaft Bearing	64-74	1	30.00	
32-66B	x Transm Housing Frt Shaft Bearing Retainer	64-74	1	N/A	
32-66C	x Gasket For Trans Front Bearing Retainer	63	1	n/a	
32-66D	x Gasket For Trans Front Bearing Retainer	64-74	1	n/a	
32-66E	Trans Front Bearing Locating Ring	64-7	1	3.00	
32-66F	Bolts For Trans Front Bearing Retainer (4)	64-7	1 SET	4.00	Set
32-66G	French Locks For Trans Front Bearing Retainer	64-7	1 PR	10.00	Pair
32-66K	Transmission Front Main Shaft Nut	63L-7	1	15.00	
32-67B	Transmission Rebuild Kit (63 Muncie)	63L	1	\$ 200.00	SALE\$
32-67C	Transmission Rebuild Kit(64-5 Muncie)(7/8"shaft)	64-5	1	200.00	SALE\$
32-67D	Transmission Rebuild Kit (65-75 Muncie)(1"shaft)	65-75	1	200.00	SALE\$
"wearable Parts"main Bearings, Synchro Rings, Gaskets, Seals Countershaft & Small Parts ...)					
32-67F	Main Shaft (rear) last 1	67	1	200.00	
32-68A	Trans Reverse Detent Ball	63-7	1	1.00	
32-68B	Trans Reverse Detent Spring	63-7	1	5.00	
32-68C	Muncie Trans Side Cover Detent Spring 1-2,3-4	63-7	1	5.00	
32-69A	Transmission Drain Plug	63-7	1	4.50	
32-99B	64-67 Corvette Style Shift Handle For Hurst Shifter	64-7	1	89.00	

<Backup
Light 4 spd

<shifters