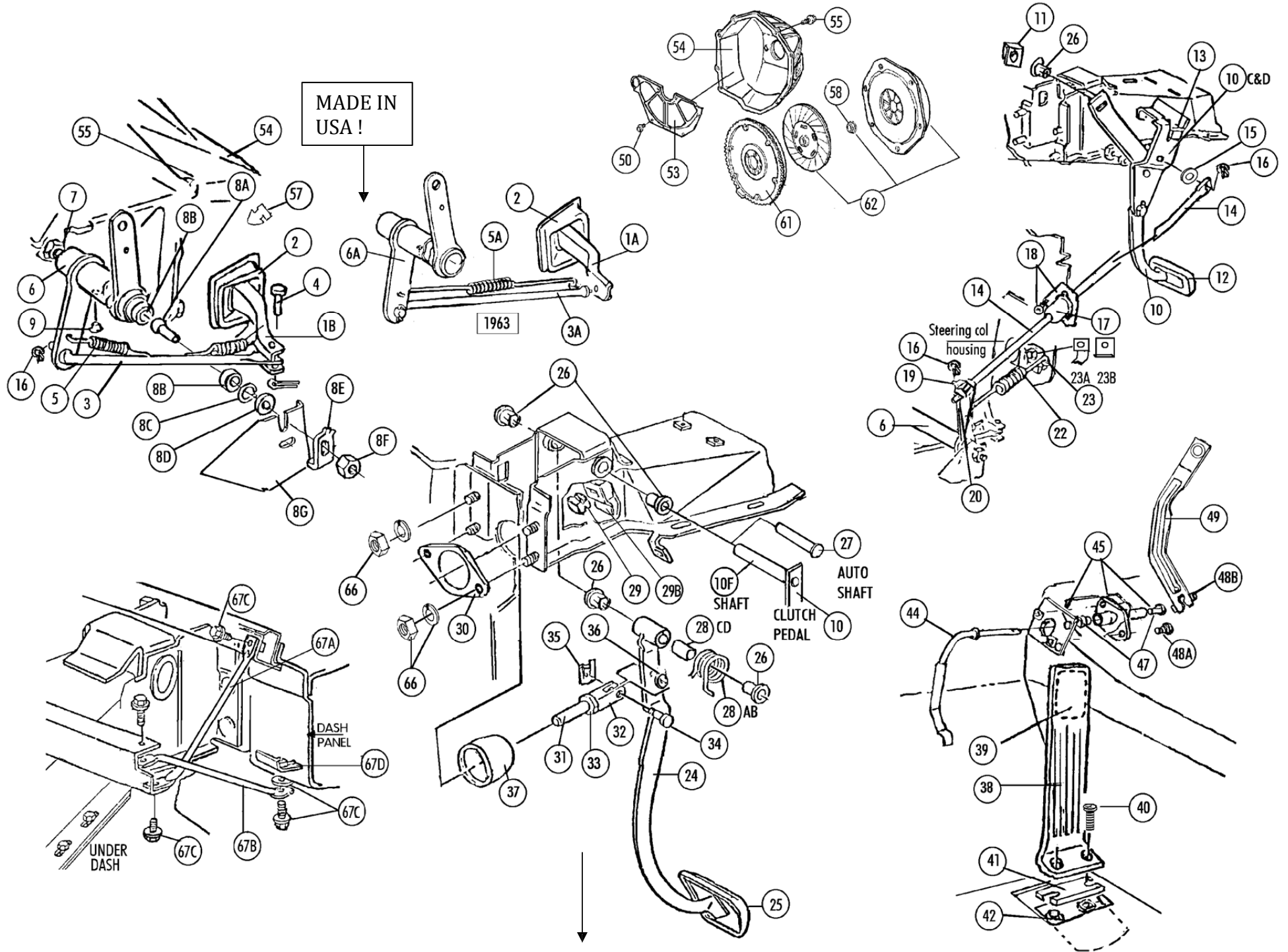


Section #28 Clutch ● Accelerator ● Brake : Z-bar, Springs, Rods, Pedals, Levers, Switches, Bell Housings, Flywheel



Section #28 Clutch ● Accelerator ● Brake : Z-bar, Springs, Rods, Pedals, Levers, Switches, Bell Housings, Flywheel

Section-Part	Name	Year	#need/Car	price
28-01A	Clutch Fork With Clip	63	1	105.00
28-01B	Clutch Fork With Clip	64-7	1	95.00
28-01C	Spring Clip & Rivet For Clutch Fork	63-7	1	19.00
28-02	Clutch Fork Boot (on bell housing)	63-7	1	8.00
28-03A	Clutch Fork Rod 63 (pin end, 11.5"OL)	63	1	40.00
28-03B	Clutch Fork Rod (327) (11") (GM ORIG)	64-5	1	23.00
28-03C	Clutch Fork Rod (396/427) (9") yes c=d	65-7	1	16.00
28-03D	Clutch Fork Rod (327) (9") yes c=d	66-7	1	16.00
28-04	Fork Rod Pin And Cotter Pin	64-7	1	3.00
28-05A	Antirattle Spring (63 clutch fork rod)	63	1	5.50
28-05B	Antirattle Springs (2) (clutch fork rod)	64-7	1 PR	6.00 Pair
28-06A	Clutch Cross Shaft (327) (USA) (Z-bar)	63-5	1	\$75.00 USA!
28-06B	Clutch Cross Shaft (396/427) (USA) (Z-bar)	65-7	1	75.00 USA!
28-06C	Clutch Cross Shaft (327) (USA) (Z-bar) (FYI B=C)	66-7	1	75.00 USA!
28-07A	Clutch Stud & Seal To Engine	63-7	1	21.00
28-07B	Rubber Seal For Clutch Ball To Engine	63-7	1	2.00
28-08H	Clutch Ball stud Set (-8A,8B,8C,8D,8E,8F) (WITH STUD #28-08A)	63-7	1 SET	26.50 Set
28-08J	Clutch Ball SEAL & hdre Set (NO STUD 8B,8C,8D,8E,8F)	63-7	1 SET	13.00 Set
28-08A	Clutch Stud To Frame	63-7	1	13.00
28-08B	Plastic Seat- Clutch Ball (pr)	63-7	1 PR	7.00 Pair
28-08C	Spring Retainer- Clutch Seat	63-7	1	2.00
28-08D	Felt Seal for clutch ball to frame	63-7	1	1.50
28-08E	Clutch Ball Lock Washer	63-7	1	3.00
28-08F	Clutch Ball Nut	63-7	1	0.25
28-08G	Frame Bracket-weld To Frame(for Clutch Ball)	63-7	1	17.50
28-09A	Grease Fitting (on clutch cross shaft)	63-7	1	0.75
28-09B	Red Plug For Cross Shaft	64-7	1	2.00
28-10A	Clutch Pedal With Shaft(use With Pin Bkt 10c,10d)	63-6	1	\$ 75.00
28-10B	Clutch Pedal With Shaft (67 with Pin Bkt 10E)	67	1	79.00
28-10C	Clutch Pedal Pin Bracket (63-66 327)	63-6	1	28.00
28-10D	Clutch Pedal Pin Bracket (65-66 396/427)	65-6	1	28.00
28-10E	Clutch Pedal Pin Bracket (67 All)(weld On)	67	1	25.00
28-10F	Clutch Pedal Shaft	63-7	1	15.00
28-10G	Bolt Set For Pin Bracket	63-6	1 SET	2.00 Set
28-11	Retainer Clip (clutch Pedal)	63-7	1	1.75
28-12	Clutch Pedal Pad	63-7	1	6.00
28-13	Clutch Pedal Bumper	63-7	1	3.50
28-14A	Clutch Push Rod (327)(correct Length) (18")	63-5	1	26.00
28-14B	Clutch Push Rod (65/396,66-7/327,427)(19-1/4")	65-7	1	26.00
28-15	Clutch Push Rod Spacer	63-7	1	1.00
28-16	Retainer Clip (J-clip)(2), on clutch rods	63-7	1 PR	1.50 Pair
28-17A	Clutch Rod Boot (2 Hole)(until Early 65)	63-5E	1	10.00
28-17B	Clutch Rod Boot (3 Hole)(starting Late 65)	65L-7	1	15.50
28-18A	Two Hole Boot Retainer With 2 Bolts	63-5E	1	8.00
28-18B	Three Hole Boot Retainer With Rivets & Screws	65L-7	1	6.50
28-18C	Clutch Boot Screws (3 Pc)	65-7	1 SET	1.00 Set
28-19	Clutch Push Rod Swivel	63-7	1	8.00
28-20	Clutch Push Rod Swivel Nuts (pr)	63-7	1 PR	0.75 Pair
28-22	Clutch Return Spring	63-7	1	5.00
28-23A	Clutch Return Spring BRACKET	63-6	1	9.50
28-23B	Clutch Return Spring Bracket	67	1	7.50
28-24A	Brake Pedal (63-66 4 SPD)	63-6	1	\$ 99.00
28-24B	Brake Pedal With Auto (63-66) X no more- discontinued.	63-6	1	n/a
28-24C	Brake Pedal (1967 4 SPD)	67	1	99.00
28-24D	Brake Pedal With Auto (1967)	67	1	99.00
28-25A	Brake Pedal Pad, 4 spd, no PB	63-7	1	6.00
28-25B	Brake Pedal Pad, 4 spd with Power Brakes	63-7	1	6.50
28-25C	Brake Pedal Pad Auto, no Power	63-7	1	6.00
28-25D	Brake Pedal Pad, Auto & P/B	63-7	1	6.00
28-26	Brake & Clutch Pedal Bushings (4 Pc)	63-7	1 SET	4.50 Set
28-27	Brake Pedal Shaft- Auto	63-7	1	18.00
28-28A	Brake Pedal Return Spring (Std & PB)	63-6	1	5.00
28-28B	Brake Pedal Return Spring (STD & PB)	67	1	5.00
28-28C	Brake Spring Bushing	63-6	1	4.00
28-28D	Brake Spring Bushing	67	1	2.00
28-29	Brake Pedal Bumper	63-7	1	3.50
28-29B	Bracket (weld On) for Brake Pedal Bumper& Switch	63-6	1	25.00



Section-Part	Name	Year	#need/Car	price
28-30	Master Cylinder Gasket (no P/B)	63-7	1	2.75
28-31	Brake Push Rod (not P/B)	63-7	1	5.75
28-32	Clevis (standard Or Power Brakes)	63-7	1	15.00
28-33	Push Rod Nut	63-7	1	0.50
28-34	Brake Clevis Pin	63-7	1	5.00
28-35	Retainer (for Brake Clevis Pin)	63-7	1	2.00
28-36	Washer (bowed)	63-7	1	1.00
28-37	Brake Master Cylinder Boot (non P/B)	63-7	1	6.50
28-38A	Accelerator Pedal (with #39)(good Repro)	63-7	1	15.00
28-38B	Accelerator Pedal (with #39)(best repro)	63-7	1	25.00
28-39	Accelerator Anti-squeak Pad	63-7	1	1.50
28-40	Accelerator Pedal Screws (pr) (Zinc)	63-7	1 SET	2.00 Set
28-41	Accelerator Pedal Spacer	63-7	1	5.00
28-42A	Accel Pedal Mounting Bracket With Rivets	63	1	9.00
28-42B	Accel Pedal Mounting Bracket With Rivets	64-7	1	10.50
28-44A	X 63 Accelerator Pedal Swivel Rod	63	1	N/A
28-44B	X 64-7 Accelerator Pedal Swivel Rod	64-7	1	N/A
28-45	Accel Swivel, Support, Bushing & Bolt Set	63-7	1 SET	35.00 Set
28-47	Accel Rod Bushings (pr) (in #28-45 accel swivel)	63-7	1 PR	2.00 Pair
28-48A	Bolts & Washers (2 Each) (for accel swivel#45)	63-7	1 SET	1.50 Set
28-48B	Bolt, Nut & Washers for Accelerator Lever:	63-7	1 SET	2.50 Set
28-49A	Accelerator Lever (250-360hp) check online.	63	1	
28-49C	Accelerator Lever (250+350+365hp+375hp)	64-5	1	\$ 39.00
28-49D	Accelerator Lever (300hp)	64-5	1	39.00
28-49F	Accel Lever (65/396,66/390-425 4spd,66-7/327)	65-7	1	39.00
28-49G	x Accelerator Lever (427/390 Auto)	66	1	N/A
28-49H	x Accelerator Lever (427/390-400 Auto)	67	1	N/A
28-49K	Accelerator Lever (427/390-435 4 Spd)	67	1	39.00
28-50A	Clutch Inspection Plate Bolts (slotted)(4 Pc)	63-6	1 SET	3.75 Set
28-50B	Clutch Inspection Plate Bolts (hex)(4 Pc)	67	1 SET	6.00 Set
28-51	Striker, Screw And Nut (for Power Brake on pedal)	63-7	1	7.50
28-53A	Clutch Inspection Plate (327/396)	63-7	1	26.00
28-53B	Clutch Inspection Plate (427)	66-7	1	26.00
28-53C	Powerglide Lower Cover (see 58-24)	63-7		
28-54A	Clutch Housing (63 3788421) (1 nos check online <<)	63	1	
28-54B	Clutch Housing (64-67 327/396/L88)(3858403)	64-7	1	N/A
28-54C	Clutch Housing (66 427)(3872444)	66	1	N/A
28-54D	Clutch Housing (66-67 427)(3899621)(new/repro)	66-7	1	195.00
28-55	Clutch Bell Housing Bolts (6 Pc) (M Headmark)	63-7	1 SET	7.00 Set
28-57	Ball Stud In Clutch Housing	63-7	1	13.00
28-58	Clutch Throwout Bearing	63-7	1	33.00
28-59A	Brake Light Switch (63-66 was metal) XX NOT AVAIL use 28-59c	63-6	1	N/A
28-59B	Brake Light Switch (white Plastic/original 67)	63-7	1	25.00
28-59C	Brake Light Switch (BLACK Plastic, replacement 63-67)	63-7	1	7.00
28-60	Nuts For Brake Light Switch (pr)	63-7	1 PR	1.00 Pair
Flywheels: Clutch Kits:				
28-61AR	Flywheel (327)(3-4 Spd) imported/replacement (with ringgear)	63-7	1	\$ 185.00
28-61B	x Flywheel- Low Mass (396 & L88) x NOT SELLING (still avail GM)	65&7	1	N/A
28-61C	x Flywheel (427/4spd) (call Chevy still avail.)	66-7	1	N/A
28-61D	Flywheel (flexplate)(327/auto)	63-7	1	130.00
28-61E	Flywheel (flexplate)(427/auto)	66-7	1	125.00
28-61F	Flywheel Ring Gear Only (10-1/2") (327/396)	63-7	1	45.00
28-61G	Flywheel Ring Gear Only (11")(427)	66-7	1	45.00
28-61H	Bolts For Flexplate (6+3) (auto)	63-7	1 SET	6.75 Set
28-62A	Clutch Kit (327,396,L88)10.5" (pressure plate,clutch disk,throwo bearng	63-7	1	240.00
28-62B	Clutch Kit (427)(pressure Plate,disk,throwout Bearing Set (11")	66-7	1	240.00
28-62C	BOLT Set (6),Clutch Pressure Plate To Flywheel	63-7	1 SET	9.00 Set
28-64B	Transmission Pilot Bearing (needle bearing)	63-7	1	25.00
28-65	Flywheel Bolts And Lw (6 Ea)	63-7	1 SET	6.00 Set
28-66A	Nut & Lw- Master Cyl & Brake Bkt To Cowl	63	1 SET	1.50 Set
28-66B	Nut & Lw- Master Cyl & Brake Bkt To Cowl	64-5	1 SET	1.50 Set
28-66C	Nut & Lw- Master Cyl & Brake Bkt To Cowl	66-7	1 SET	1.75 Set
28-67A	Brace Rod Under Dash- Upper	63-7	1	\$ 19.00
28-67B	Brace Rod Under Dash- Lower	63-7	1	19.00
28-67C	Bolts For Under Dash Rods & Pedal Housing To Cross Brace	63-7	1 SET	6.50 Set
28-67D	Reinforcement For Rods To Firewall (Eng Side)	63-7	1	11.00