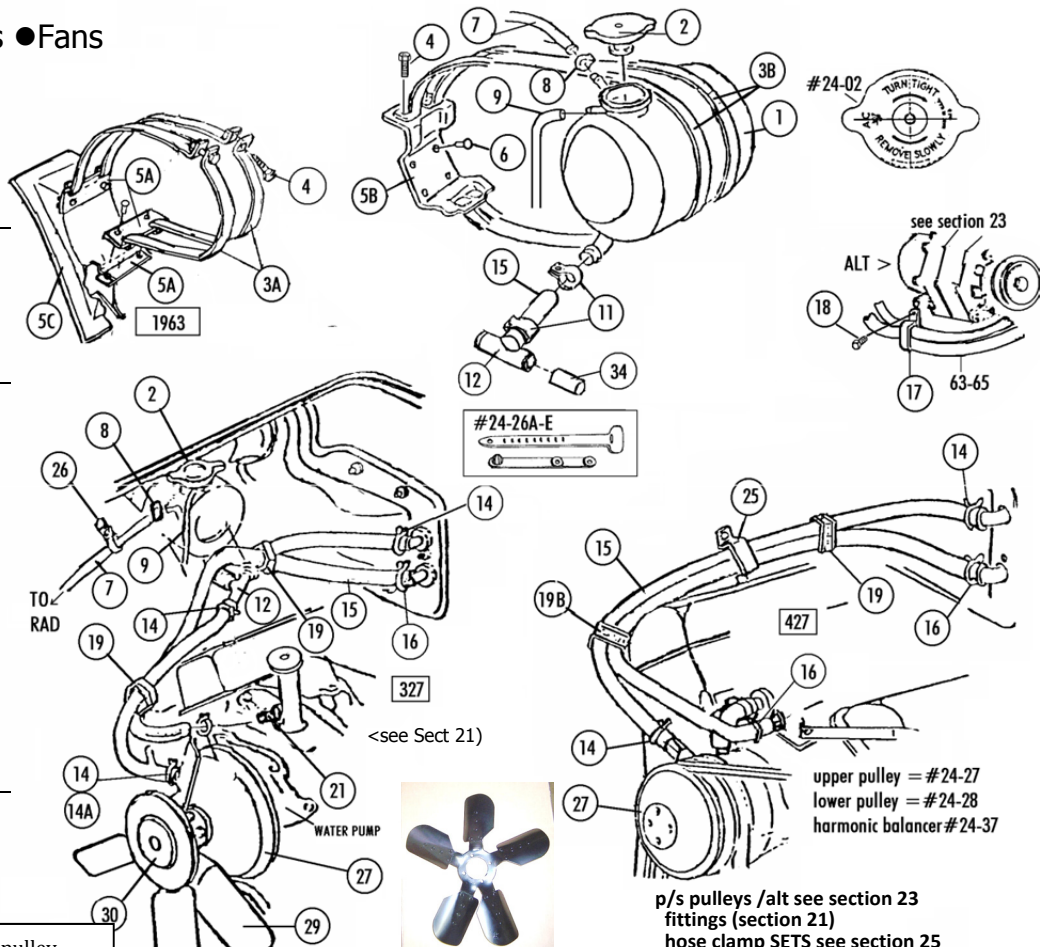


Section #24 Heater Hoses ● Expansion Tanks ● Pulleys ● Clamps ● Fans

Sec-Part#	Name	Year	#Need/Car	\$ Inc
24-01A	Radiator Supply Tank (327/396/L88)	63-7	1	\$ 165.00
24-01B	Rad Supply Tank (327/396/L88) DATED - give date	64L-7	1	195.00
24-01C	Rad Supply Tank (pressed fittings)(give Date)	63-4E	1	195.00
> Radiator Caps - Made in USA - GM Licensed Repro - see photos online				
24-02A	Radiator Cap (AC 307-13 Lb)(63all,64-5noA/C,396	63-5	1	49.00
24-02B	Radiator Cap(RC 26-15 Lb)(66-7/327 All,64-5 A/C)	64L-7	1	49.00
24-02C	Radiator Cap (RC 15-15 Lb)(427 All)	66-7	1	49.00
24-03A	Supply Tank Straps (2 Long, 2 Short)	63	1 SET	28.00 Set
24-03B	Supply Tank Straps (pr)	64-7	1 PR	10.00 Pair
24-04	Tank Strap Bolts With Correct EL Headmark (2)	63-7	1 PR	3.75 Pair
24-05A	Metal Brackets, Backing Plates & Rivets (set)	63	1 SET	19.00 Set
24-05B	Supply Tank Bracket	64-7	1	12.00
24-05C	Fiberglass Supply Tank Support	63	1	60.00
24-06	Rivets for tank bkt 24-05B (4 Pc)	64-7	1 SET	1.00 Set
24-07	Radiator To Supply Tank Hose (blue logo)	63-7	1	14.00
24-08	Hose Clamps (for #24-07 rad to tank hose) (2)(orig style)	63-7	1 PR	18.00 Pair
24-08B	replacement,Hose Clamps (2) for (24-07 rad to tank) 327/396)		1 pr	5.00 pair
24-08C	screws & nuts (2+2)orig type for exp tank to rad clamp	63-7	1 pr	2.50 pair
24-09	Overflow Hose , ribbed (327/396/427)	63-7	1	6.00
24-11	Hose Clamp (Tank To T)(2)	63-7	1 PR	4.00 Pair
24-12	Heater Hose T Fitting	63-7	1	11.00
24-14	3/4" Hose Clamp (2)	63-7	1-2PR	2.50 Pair
24-14A	Hose Clamp- 3/4" hose To Water Pump (with A/C)	66-7	1	2.00 Each
24-15	Heater Hose Set 3/4 Ribbed, 5/8 With White GM	63-7	1	45.00
24-16	5/8" Hose Clamps (2)	63-7	1-3pr	2.50 Pair
24-17	Hose Clip On Alternator Brace (with Twist)	63-5	1	14.00
24-18	Bolt For Hose Clip (#24-17 on alt brace) E HDMK	63-5	1	0.75
24-19A	63 Heater Hose Straps- Aluminum (non A/C)(2)	63	1 PR	5.00 Pair
24-19B	Heater Hose Clips (non A/C)(2)	64-7	1 PR	8.00 Pair
24-25A	Hose Fender Clamp (427)(with Hardware)	65-7	1	10.50
24-25B	Hose Fender Clamp (327 A/C. 427 A/C)(with Hardware)	66-7	2	10.50 Each
24-25D	Fender Clamp Bolts & Nuts (2+2)(RBW)	63-7	1 SET	2.25 Set
24-25E	Hose Clamp On Fender Skirt (63 A/C)	63	1	10.00
24-26A	Black 2-hole, Hose & Wire Plastic Strap	63-7	8	2.00 Each
24-26B	White T-shaped, Hose & Wire Plastic Strap	63-4	7	2.00 Each
24-26C	Black T-shaped, Hose & Wire Plastic Strap	65-7	7	2.00 Each
24-26D	Complete Plastic Strap Set (8-2 Hole, 7-white T)	63-4	1 SET	25.00 Set
24-26E	Complete Plastic Strap Set (8-2 Hole, 7-black T)	65-7	1 SET	25.00 Set
Pulleys - upper - Water Pump / Lower = Crankshaft - see section 23 for P/S and Alt Pulleys				
24-27A	Upper Pulley (double)(250-300hp)(original)	63-5	1	\$ 165.00 Used
24-27B	X Upper Pulley (DbI/deep)(327/340,360,365-375hp)+ x Upper Pulley (327/350hp) no P/S,no A/C (used)	63-5 66-7	1	N/A
24-27C	Upper Pulley (Double)(64-65 327/250-300hp A/C)(no#) &65/350 all		1	90.00 Used
24-27D	Upper Pulley (Double)(327/365hp With A/C) (NOS)	64-5	1	98.00
24-27E	Upper Pulley (327/300hp)(66-7)single Groove	66-7	1	75.00
24-27F	Upper Pulley (Double)327/300-350hp With A/C) + (66-67 350hp With P/S & A/C,350hp With P/S)	66-7	1	145.00
24-27G	Upper Pulley (Double)(67 427)(no A/C)	67	1	109.00
24-27H	Upper Pulley (double)(65-66 396/427)(no A/C)	65-6	1	149.00
24-27J	Upper Pulley (Triple)(66-67 427 A/C)	66-7	1	215.00
24-27K	Upper Pulley Reinforcement (327 Non A/C,427 A/C)	66-7	1	5.00
24-28A	Lower Pulley (Double)(327/250-300 Hp)	63-5	1	75.00
24-28B	Lower Pulley (single)(327/300hp)(no A/C) NOS	66-7	1	69.00
24-28C	Lower Pulley (Double/Deep) #3766987 63-64 hiper	63-64	1	\$ 156.00 REPRO
24-28D	Lower Pulley (Double)(327/250)(A/C)	63-5	1	79.00
24-28E	Lower Pulley (DbI)(327/300-350hp)(A/C)replace >(6-3/4OD) 65-7		1	79.00
24-28F	Lower Pulley (double)(327/300-350hp)(A/C)(orig) & No A/C 350hp P/S (7-1/4) used	65-7	1	\$ 165.00 Used
24-28FN	NOS/NEW Lower Pulley new old stock/ new same as aboveF >		1	\$ 185.00 NOS
24-28G	Lower Pulley (327 P/S)(use with a,b,d,e,f) shallow groove add on/3rd groove/shallow (65 350hp no a/c Not used)	63-7	1	55.00
24-28H	Lower Pulley (Double)(396/427 All) Cast Iron#108 Correct Repro With 3863108 On Outer Ring (USA)	65-7	1	235.00
24-28J	*Lower Pulley (Double) (327/365hp A/C)(deep gr) >>	64	see C	65 see K
24-28K	Lower Pulley 65-67 327/hiper No A/C #3858533	65-7		\$ 125.00GM
24-28L	P/S add on pulley /Deep Groove /(use w C&J) hiper HIPER/340,360,365 (65 350hp no a/c Not used) >	63-5		X
use 24-28G				



Fan Blades with stampings - 63-64E = round head Rivets, 64L-67 flat head rivets

24-29A	Fan- Five Blade (17-1/8") (327 Except A/C)	64L-7	1	\$ 225.00 Each
24-29B	Fan- Seven Blade (18") (327 With A/C)	64-5	1	250.00 Each
24-29C	Fan- Five Blade (17.5"/34.5 Pitch)(427)	66-7	1	225.00 Each
24-29D	Fan- Five Blade (17"/more Pitch)(396)	65	1	225.00 Each
24-29E	Fan- Five Blade (17-1/8")(327 No AC,RndHd Rivets	63-4E	1	225.00 Each
24-29F	Fan- 5 Blade (18"more Pitch)(A/C)rnd hd Rivet	63-4E	1	250.00 Each
24-29G	Fan- 5 Blade(18"more Pitch)(66-7 327 AC)FH Rivet	66-7	1	225.00 Each

Fan Clutch Repro, no pat pend marks, no dates,bar type(K&B)

24-30A	Fan Clutch 327 (Bar) Repro,no pat pend, no date	63-7	1	140.00
24-30B	Fan Clutch 396&427 (Bar)repro,no pat pen,no date	65-7	1	140.00
24-30R	Fan Clutch Eliminator Spacer (use Orig Fan)	63-7	1	65.00
24-34	Heater Delete Cap	63-7	1	5.00
24-35A	Nut & LW Set (fan To Clutch)(4 Ea)	63-7	1 SET	1.00 Set
24-35B	Bolt& LW Set (Fan Clutch To Water Pump)(4ea)	63-7	1 SET	7.00 Set
24-35C	Stud (fan To Fan Clutch)(4 Pc)	63-7	1 SET	5.00 Set
24-36A	Bolt & Lw Set (Lower Pulley-327)(3 Ea) (E Hdmk)	63-7	1 SET	6.50 Set
24-36B	Bolt & Lw Set (Lower Pulley- 396/427)(3 Ea) (TR)	65-7	1 SET	2.25 Set

<pulley

Fans >

Fan > Clutch

Harm > Balancer

p/s pulleys /alt see section 23 fittings (section 21) hose clamp SETS see section 25

upper pulley = #24-27
lower pulley = #24-28
harmonic balancer #24-37