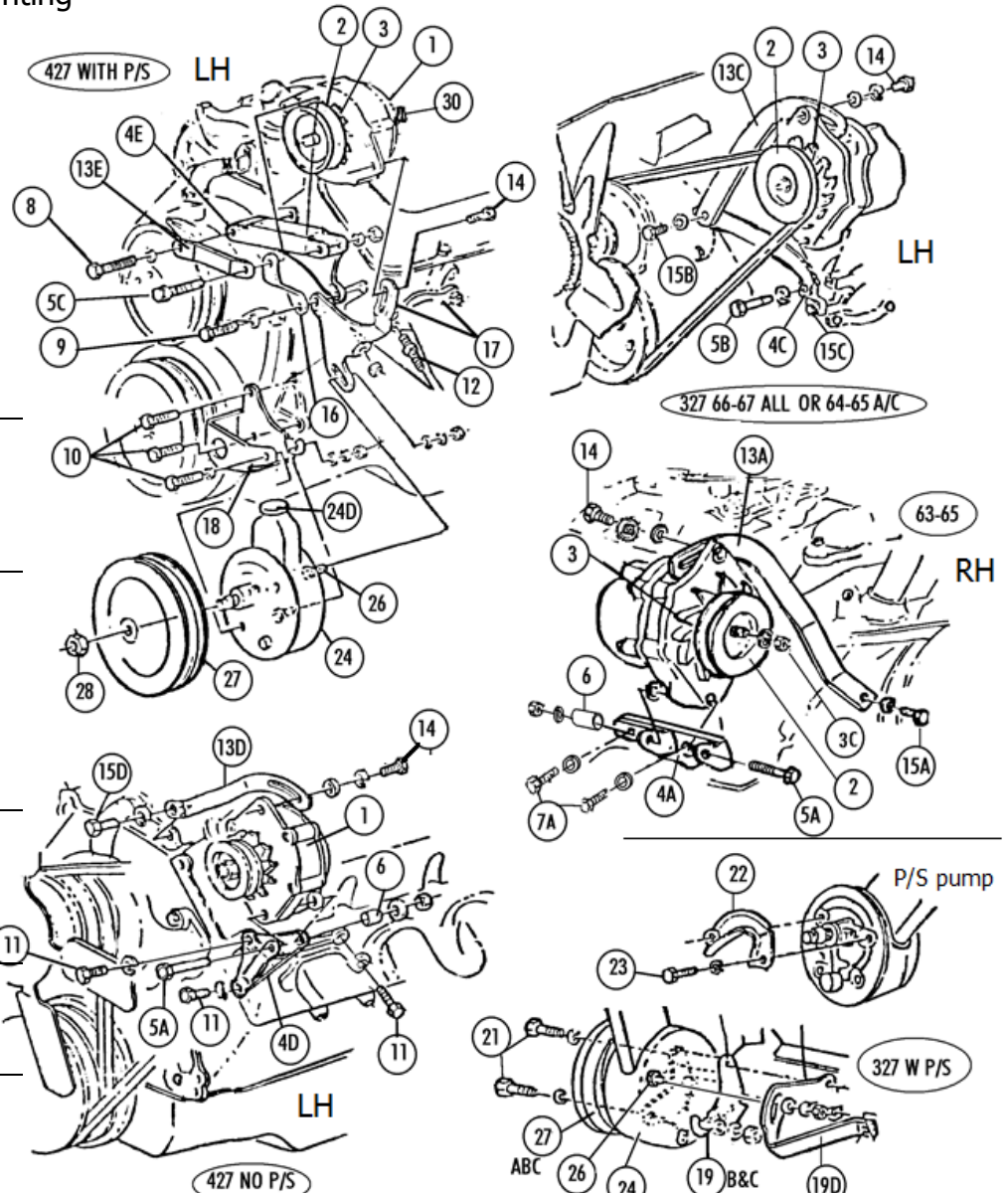


Section #23 Alternator Mounting & Power Steering Pump & Mounting

Sec-Part#	Name	Year	#Need/Car	Price Inc
23-01	x No Alternators	63-7	1	N/A
23-02A	Alt Pulley (250-350hp No A/C)with Or Without P/S	63-5	1	\$ 39.00
23-02B	Alt Pulley & Disk (250-300hp A/C)	63	1	75.00 Set
23-02C	Alt Pulley (250-300hp A/C)	64-5	1	39.00
23-02D	Alt Pulley (390-400hp A/C & P/S)	66-7	1	39.00
23-02E	Alt Pulley (390-400hp A/C No P/S)(66-67 350 A/C)	66-7	1	39.00
23-02F	Alt Pulley (390-435hp No P/S No A/C, 64-65 365hp A/C)	64-7	1	39.00
	66-7 327/350hp No P/S, No A/C (396 no p/s,noA/C)	66-7	1	
23-02G	Alt Pulley (340,360-375hp No A/C)	63-5	1	39.00
23-02H	Alt Pulley (390-435hp P/S No A/C)	65-7	1	39.00
23-02J	Alt Pulley & Fan(300hp No A/C,350hp NO P/S No AC)	66	1	50.00 Used
23-02K	x Alt Pulley & Fan (65 250-350 A/C,66 300hp A/C) (66-7/350hp P/S No A/C)			N/A
23-02L	x Alt Pulley & Fan(300hpNO A/C,350hp NO P/S No AC)	67	1	n/a
23-02M	Alternator Pulley & Fan (300hp A/C)	67	1	50.00
23-03A	Alternator Fan	63	1	29.00
23-03B	Alternator Fan	64-7	1	29.00 RECEN
23-03C	Alternator Pulley Nut & Washer	63-7	1	5.00
23-03D	Internal Spacer For Altern Fan (on alt shaft)	63-7	1	3.00
23-04A	Alternator Bracket- RH (327) (64-5, fits 63-65)	63-5	1	39.00
23-04A3	Alt Bracket, RH 63=64Early with correct hole position	63-4E	1	72.00
23-04B	Alternator Bracket- LH (327 A/C)	63	1	50.00
23-04C	Alternator Bracket- LH (327)	64-7	1	28.00
23-04D	Alternator Bracket- LH (427)	66-7	1	90.00
23-04E	Alternator Bracket- P/S LH (396/427)	65-7	1	53.00
23-04F	Alternator Bracket- LH (396)	65	1	95.00
23-05A	Alt Long Bolt, Washer, Nut (for 4A,B,D,F) (TR)	63-7	1	4.75
23-05B	Alt Long Bolt And Lw (for 4c) (o)	64-7	1	1.25
23-05C	Alt Long Bolt, Washer & Nut (for 4E) (NO MK)	65-7	1	1.50
23-06	Alternator Spacer (63-5 327 & 65-7 396/427)	63-7	1	4.00
23-07A	Alt Bracket Bolts & Washers (63-65 RH)(pr) (M HDMK)	63-5	1 PR	2.00 Pair
23-07B	Alt Bracket Bolts & Washers (63 LH-A/C)(pr) (TR HDMK)	63	1 PR	3.00 Pair
23-08	Bolt & Washer (396/427 P/S) (1 Each) (O)	65-7	1	1.00
23-09	Bolt & Washer (396/427 P/S) (TR Hdmk)	65-7	1	2.00
23-10	Bolts & Washers (396/427 P/S)(3 +3)	65-7	1 SET	2.25 Set
23-11	Bolts & Washers (TR)(396/427 No P/S)(3+3)	65-7	1 SET	4.50 Set
23-12	Stud & Nut (396/427 P/S)	65-7	1	3.00
23-13A	Alternator Brace RH 327	64-5	1	25.00
23-13B	Alternator Brace LH 63 A/C	63	1	29.00
23-13C	Alternator Brace LH 66-7 327 & 64-65 350-365 Hp A/C	66-7	1	25.00
23-13D	Alternator Brace LH 396/427	65-7	1	25.00
23-13E	Alternator Brace LH 396/427 P/S	65-7	1	15.00
23-13F	Alternator Brace LH 64-5 250-300hp with A/C	64-5	1	33.00
23-13G	Alternator Brace (63 RH, NO A/C) (with V Stamp)	63	1	35.00
23-14	Alternator Top Adjust: Bolt, Washer & Spacer (WB Hdmk)	63-7	1	2.00
23-15A	Alt Brace Bolt & Lw (RH)(TR)(water Pump)	63-5	1	2.00
23-15B	Bolt & Lw- LH Alt Brace To Water Pump(TR)(327)	64-7	1	3.00
23-15C	Alt Bracket Bolt & Lw (327 LH)(exh)	64-7	1	1.00
23-15D	Alt Brace Bolt & Lw (396/427)(no P/S)	65-7	1	1.50
23-16	Alternator Brace LH (396/427 P/S)	65-7	1	15.50
23-17	Brace P/S Pump & Alt. (396/427)	65-7	1	66.00
23-18	Bracket Power Steering Pump (396/427)	65-7	1	50.00
23-19B	Power Steering Pump Bracket (327)(thru11/64=65E)	63-5E	1	25.00
23-19C	Power Steering Pump Bracket (327)	65L-7	1	26.00
23-19D	Power Steering Pump Bracket (327)	63-7	1	22.00
23-21A	P/S Bracket Bolt & Lw (327)(9 Pc Set)	63-5E	1 SET	3.00 Set
23-21B	P/S Bracket Bolts & Lws (327)(9 Pc Set)	65L-7	1 SET	3.50 Set
23-22	P/S Pump Belt Guard (327- A/C)	65-7	1	18.00
23-23	Belt Guard Bolts (pr) (327 A/C)	65-7	1 PR	1.50 Pair
23-24B	X P/S Pump- (327/396/427) x	63-7	1	N/A
23-24C	P/S Pump Metal Case (with All Seals To Change)	63-7	1	99.00
23-24D	P/S Pump Filler Cap (round plastic=replacement)	63-7	1	4.00
23-24E	Power Steering Metal Cap- With Ears & Writing	63-7	1	50.00
23-25	P/S Pump Seal Kit (7 Pc)	63-7	1 SET	18.00 Set
23-26	P/S Pump Studs, Nuts, FW, SLW (2 Each)	63-7	1	14.00 Set



Power Steering Pump Pulleys - see section 24 for Upper and Lower Pulleys & Harm Bal.

23-27A	Single P/S Pulley (250-300hp All)(350hp A/C)	63-7	1	\$ 62.00
23-27B	Single P/S Pulley (327/350 Hp No A/C)(Cast Iron) x	65-7	1	N/A
23-27C	Double P/S Pulley (396/427)(Cast Iron)	65-7	1	\$ 108.00
23-28	P/S Pulley Nut	63-7	1	2.00
23-28B	P/S Pulley Woodruff Key	63-7	1	2.50
23-29	Idler Pulleys (see Section 21) #21-28A OR B			
23-30A	Alternator Plug	63-7	1	8.00
23-30B	Alternator Terminal Nut & Lw Set	63-7	1 SET	0.75 Set
23-30C	Alternator Boot (correct With + Raised Rib)	63-7	1	10.00
23-31	396/427 P/S Bracket Set (4E,13E,16,17,18)	65-7	1 SET	\$ 195.00 Set
23-32	396/427 P/S+alt Bolt Set (5C,8,9,10,12,14,26)	65-7	1 SET	25.00 Set
23-33	Capacitor In Alternator With Retainer(=53-03M)	63-7	1	20.00 Each

(see Section 41 For more Power Steering) -- see photos online
And section 24 for upper/lower pulleys