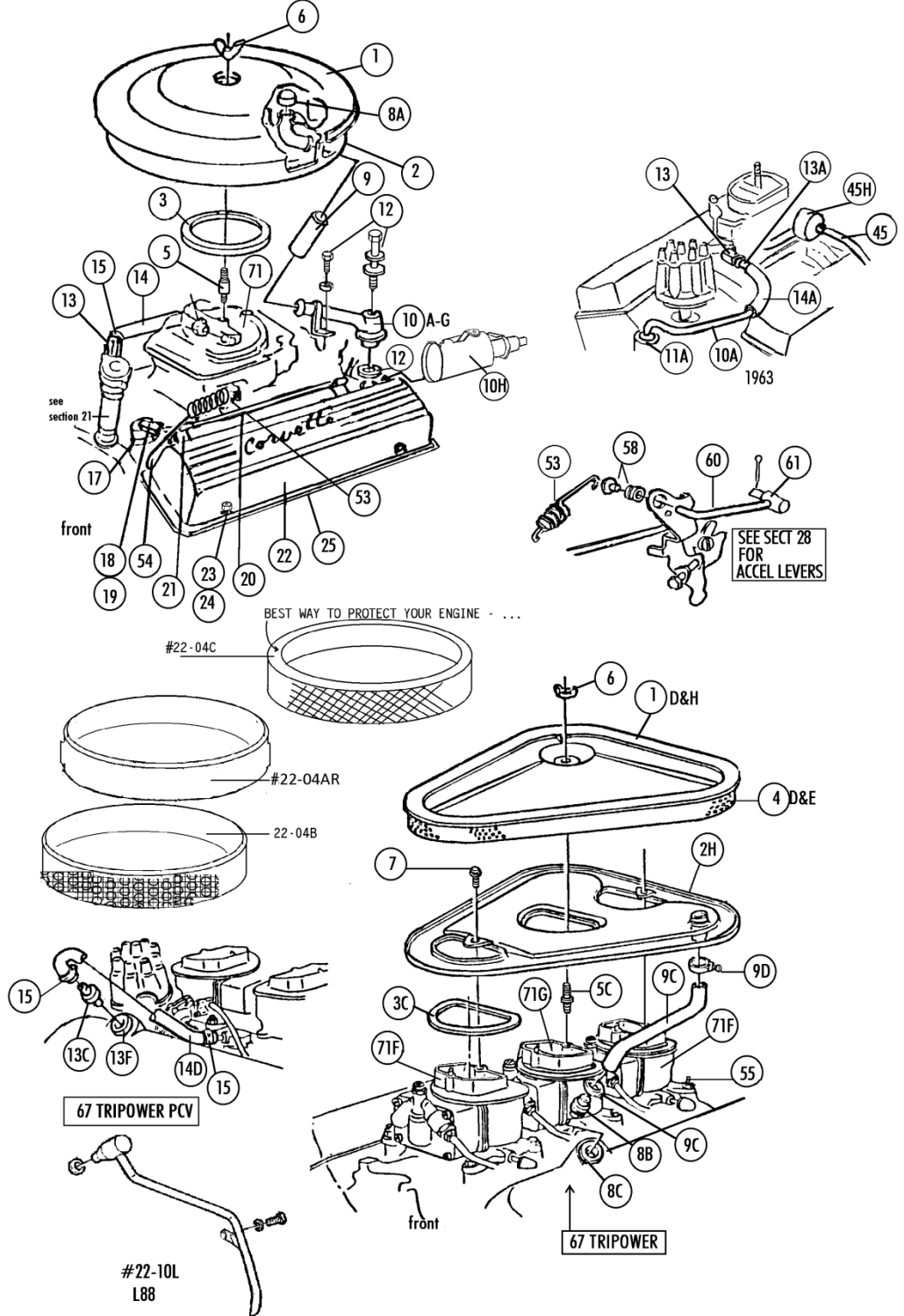


Section22 Engine: Air Cleaners●Valve Covers●Fuel Pumps●Carburetors●PCV●Choke●Exhaust Bolts●Fuel Lines●Accel Linkage Etc... (Next 4 Pages)

AIR CLEANERS

Sec-Part	Name	Year	#need/Car	Price
22-01A3	Air Cleaner Cover 63-64 327 (red printing)	63-4	1	\$ 125.00
22-01A5	Air Cleaner Cover 1965 327 (black Printing)	65	1	125.00
22-01B	Air Cleaner Cover 65 396 (black)	65	1	80.00
22-01C	Air Cleaner Cover 66-67 327 & 427	66-7	1	85.00
22-01E	Air Cleaner Small Cover (L88) (black)	67	1	45.00
22-01F	Air Cleaner Screen (on Base) (L88)	67	1	18.00
22-01H	Air Cleaner Cover (67 Tripower) x not avail.	67	1	n/a
(all Air Cleaner Covers Have Silk Screen) see photos online <<				
22-02A	Air Cleaner Base (63 250 & 300 Hp)	63	1	\$ 275.00
22-02B	Air Cleaner Base (63 340 HP)	63	1	\$ 229.00
22-02C	Air Cleaner Base (64-65 250 & 300 Hp)	64-5	1	259.00
22-02D	Air Cleaner Base (64-65 350 & 365 Hp)	64-5	1	229.00
22-02E	Air Cleaner Base (66-67 327)	66-7	1	70.00
22-02F	Air Cleaner Base (66-67 427 Only)	66-7	1	70.00
22-02F5	Air Cleaner Base (65/396 Only) X	65	1	N/A
22-02G	Air Cleaner Base (67 L88) x	67	1	N/A
22-02H	Air Cleaner Base (67 Tripower)	67	1	\$ 225.00
22-02J	X Air Cleaner Base 63 With Air Conditioning X	63	1	N/A
22-02K	X Air Cleaner Base With Air Cond (250-300hp)	64-5	1	N/A
22-02L	X Air Cleaner Base With A.I.R. (66 smog)(327)xx	66	1	x
22-02P	Air Cleaner Base 67 Tripower With A.I.R. (smog)	67	1	\$ 340.00
22-02M	Air Cleaner Base With A.I.R. (67 327 smog)	67	1	95.00
22-02N	X Air Cleaner Base With A.I.R.(66-67 smog)(427/390)	66-7	1	N/A
22-02Q	Elbow only In 66-67 327 A/CL Base (welded) last one	66-7	1	30.00
22-03A	A/CL Gasket (WCFB & AFB) (tan fiber)	63-5	1	2.50
22-03B	A/CL Gasket (Holley) (tan fiber)	64-7	1	3.00
22-03C	A/CL Gasket (Tripower)(set Of 3) (cork/rubber)	67	1 SET	10.00 Set
22-04AR	Foam Filter Element (327 Carb) repl NO Imprint (use w 4b)	63-5	1	30.00 Each
22-04B	Air Cleaner Metal Screen (327 Carb)(use With 04A	63-5	1	29.00
22-04BR	Paper Element For 63-65 >replaces 4A&B Will have small gap	63-5	1	15.00
22-04C	x Filter Element Screen Type (396,66-7 327/427) *	65-7	1	discontinued.
Xno more (White Lettering, NOT embossed) *not 100%NCRS wants embossed & outline)				
22-04CR	Air Filter Element-replacement paper type (396,66-7 327/427	65-7	1	12.00
22-04DR	Foam Filter Element (3x2) (repl/NO Imprint)	67	1	24.00
22-04E	A/CL Metal Screen (67 Tripower)	67	1	39.00
22-04F	A/CL Foam Element (FI) (with AC A163C Embossed)	63-5	1	35.00
22-04G	A/CL Base Foam (67 L88) (1.5" wide)	67	1	19.00
22-04H	A/CL Screen & Foam(J) In Hood (67 L88)(4"wide)	67	1	75.00
22-04J	A/CL Foam In Hood (67 L88) (4" wide)	67	1	24.00
22-05A	Carb Stud (Wcfb/afb)	63-5	1	7.50
22-05B	Carb Stud (round)(Holley)63/340hp,65/425,66-67	63-7	1	6.00
22-05C	Carb Stud (67 Tripower Or L88)	67	1	7.00
22-05D	Carb Stud (hex) (64 365HP, 65 350 & 365hp)	64-5	1	7.00
22-06	Air Cleaner Wing Nut (all Exc 396)(chrome)	63-7	1	6.00
22-06B	Air Cleaner Wing Nut (65/396)(black)	65	1	6.00
22-07	A/CL Bolts (67 Tripower) (M hdmk)(2)	67	1 PR	7.75 Pair
22-08A	Flame Arrestor Screen (327/396/427)	64-7	1	9.50
22-08B	Flame Arrestor (67/Tripower or 64-5 FI)	64-7	1	29.00
22-08BN	Flame Arrestor (67/Tripower)(64-5 FI)(N.O.S.)	64-7	1	39.00
22-08C	Flame Arrestor Grommet, 67 Tripower	65-7	1	3.00
22-09A	Hose- Air Cleaner To Oil Tube (no logo/no ribs)	63	1	4.00
22-09B	Hose,Air Cleaner to Breather Tube (NoRibs/noLogo)	64-7	1	4.50
22-09C	Hose for Tripower , Air Cleaner to Flame Arrestor	67	1	15.00
22-09D	Hose Clamps (67 tripower A/cl hose)(pr)	67	1 PR	9.00 Pair
22-10A	Crankcase Breather/PCV Tube (63 All & 64E FI)	63	1	\$ 20.00
22-10B	Crankcase Breather Tube (64-65 250-300 Hp)	64-5	1	56.00
22-10C	Crankcase Breather Tube (64-65 350 & 365 Hp)	64-5	1	56.00
22-10D	Crankcase Breather Tube (66-67 300 Hp)	66-7	1	56.00
22-10E	Crankcase Breather Tube (66-67 350 Hp)	66-7	1	56.00
22-10F	A/CL Metal Elbow In Valve Cover (396/427)	65-7	1	16.00
22-10G	Crankcase Breather Tube (64-5 FI)	64-5	1	110.00
22-10H	Breather Can (inside 327 Engine)	63-7	1	60.00
22-10J	Breather CAP In RH Valve Cover (L88) x	66-7	1	N/A
22-10K	Plug For Hole In A/CL (L88)	66	1	10.00
22-10L	L88 Road Draft Tube (Correct Repro) -	66-7	1	\$ 950.00



Section22 Engine PCV Valve Covers - Valve Cover Bolts- Exhaust bolts

Sec-Part	Name	Year	#need/Car	Price
22-11AE	Breather Tube Grommet/metal Retainer Til 5/10/63	63E	1	\$ 15.00
22-11AL	Breather/PCV Tube Rubber Grommet After 5/10/63	63L	1	8.50
22-11B	Breather Tube Grommet (396 & 427)	65-7	1	3.75
22-12A	Bolt,washer,gasket & Stud Set 64-5 250,300hp FOR breather tube	64-5	1 SET	10.00 Set
22-12B	Bolt,washer,gasket & Bolt Set 64-5 350,365,375hp (breather tube)	64-5	1 SET	6.00 Set
22-12C	Bolt,washer,gasket & Bolt Set 66-67 300,350HP for breather tube	66-7	1 SET	6.00 Set

PCV Valves, adapters, fittings, tubes hoses, grommets

22-13A	PCV Valve (63 327) (CV590)	62-3	1	35.00
22-13B	PCV Valve (66-67 327) (CV726C)	66-7	1	36.00
22-13BN	NOS/IN DELCO BOX PCV VALVE CV726C (66-67 327)	66-67	1	40.00 NO RTN
22-13C	PCV Valve (427) STD Brand/ Repl for #CV736C	66-7	1	6.00
22-13CN	NOS/DELCO'AC ROCHESTER CV736 C' 427 PCV VALVE	66-7	1	12.00 NO RTN
22-13D	PCV Adapter & Elbow (1963)	63	1	12.00
22-13E	PCV Carb Vacuum Restriction Elbow (WCFB,AFB,FI)	64-5	1	28.00
22-13F	Grommet for 427 PCV Valve (also For 22-10L L88)	66-7	1	4.00
22-13G	PCV Tube (65 396)	65	1	30.00
22-13H	PCV Tube Grommet (65 396) (in Valve Cover)	65	1	20.00
22-13J	PCV Elbow In Holley Carb (64-65 327 HOLLEY)	64-5	1	25.00
22-13K	PCV And PB Fitting In Carb,1963 (2 Pc)	63	1	35.00
22-13L	63 PCV Fitting In Carb (air Cond)(3 Pc)	63	1	35.00
22-13M	63 PCV Fitting (P/B & A/C)(2 Pc Set) \$	63	1	45.00
22-13N	63 FI PCV Valve Elbow (in FI Plenum)	63	1	10.00
22-13P	PCV Valve- Black (FI)	62-4E	1	35.00
22-13Q	PCV Elbow In Carb (396)	65	1	3.50
22-14A	Breather/PCV Hose (63 327)	63	1	8.00
22-14B	PCV Hose & Clamps (64-65 327)	64-5	1	8.00
22-14C	PCV Hose & Clamps(#15) (427- 4 BBL)(90Bend)	66-7	1	15.00
22-14D	PCV Hose & Clamps (67 Tripower)	67	1	9.75
22-14E	PCV Hose & Clamps (66-67 327)	66-7	1	8.00
22-15	PCV Hose Clamps (pr) (rounded corners) (black round)	64-7	1 PR	1.75 Pair
22-16A	PCV Hose Clip (64-5 327/250-300hp & 66 425)	64-6	1	20.00
22-16B	PCV Hose Clip On Carb Bolt (390 Hp)	66-7	1	14.00
22-16C	PCV Hose Clip On Intake Bolt (390 Hp)	66-7	1	25.00

Temp Sender * NO returns - no guarantee on calibration

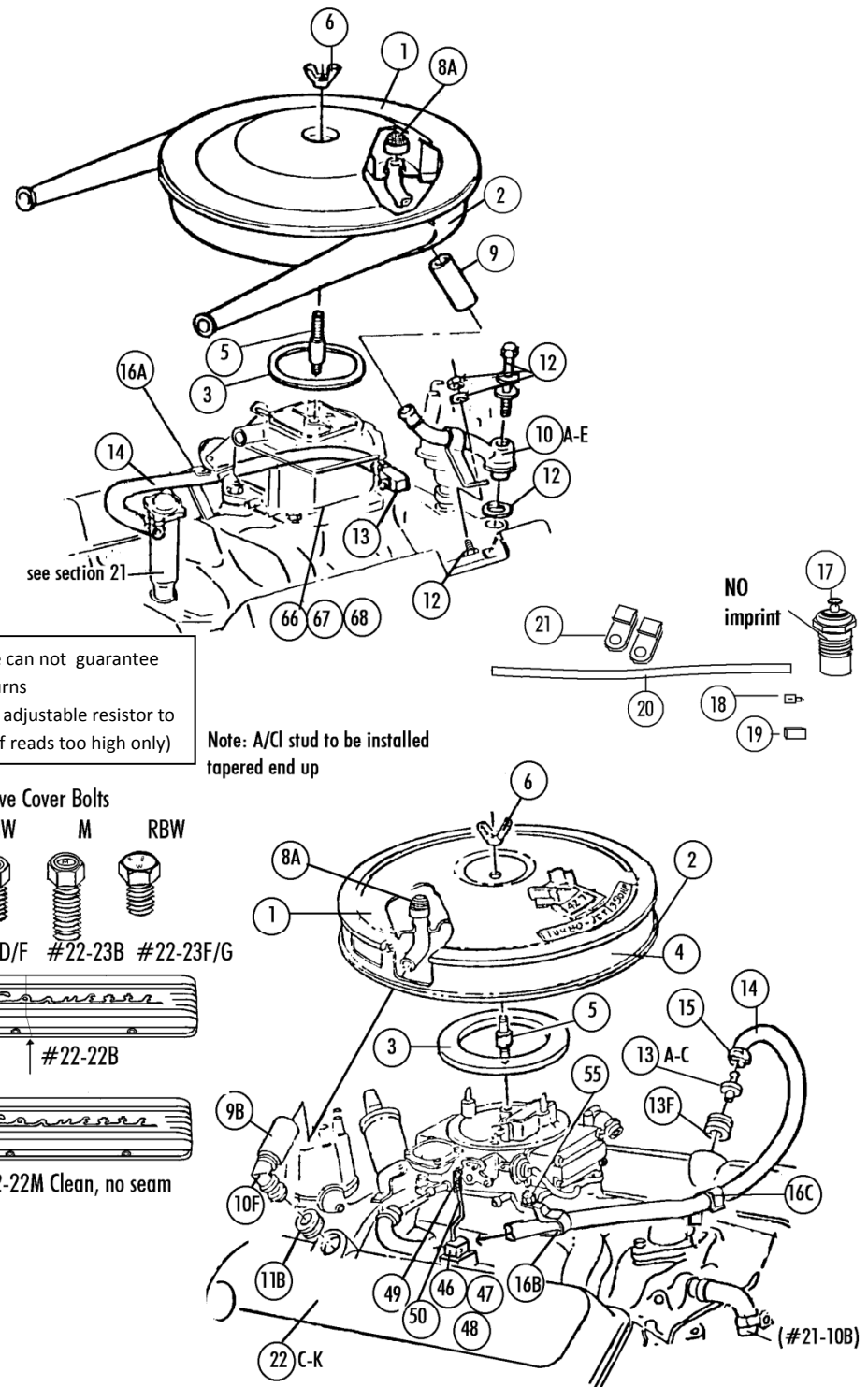
22-17B	Temp Sender - repro w Markings/upside down yes*	63-7	1	\$ 30.00
22-17C	Adjustable Resistor for temp sender (if gauge reads too high)	63-7	1	34.00
22-17D	Temperature Sender- (*no markings)(replacement)	63-7	1	25.00
22-18	Metal Terminal (for temp wire)	63-7	1	0.50
22-19	Plastic Terminal Cover (black) (for temp wire)	63-7	1	2.25
22-20A	Insulator (black loom) (for temp wire)	63-7	1	5.00
22-20B	Temp Wire Insulator Kit(#18,19,20,21A) 327 hiper	63-7	1	13.00
22-20C	Temp Wire Insulator Kit(18,19,20) 327loper,396, 427)	63-7	1	7.00
22-21A	Wire Clips - For Therm Wire 327 Alum V/cover (pr)	63-7	1 PR	7.25 Pair
22-21B	Clips(pr) For Therm Wire On LH Steel V/C (weld)327loper/396/427	63-7	1 PR	6.50 Pair
22-22A4	Steel Valve Covers -(327/63L-6)(after 63 #13000)	63L-6	1 PR	115.00 Pair
22-22A7	Steel Valve Covers (67 327/300) (pr)	67	1 Pr	160.00 Pair
22-22B	Alum. Valve Cover r(2) (350hp)(With Seam)GM Lic Repro	66L-7	1 PR	x poor qual xn/a

Valve Covers - All correct Repro - Yes big block Valve covers have drippers <<

22-22H	Valve Covers (396/427) (65 All+late 66)(pr)	65-6	1 PR	200.00 Pair
22-22J	Valve Covers (427)(all 66 Early)(A/C Dimple)(pr)	66E	1 PR	200.00 Pair
22-22K	Valve Covers (427)(67 All)(pr)	67	1 PR	200.00 Pair
22-22L	Valve Covers (67 L89)(chrome) (alum heads) no more	67	1 PR	n/a

Valve Cover Bolts - with headmarks

22-23A	Alum Valve Cover Bolts 327 (phillips)(8 Pc)(thru 3/63)	63E	1 SET	5.00 Set
22-23B	Alum Valve Cover Bolts 327 hiper (M Hdmk)(8 Pc)	63L-7	1 SET	14.00 Set
22-23D	Steel Valve Cover Bolts 327 (RBW Hdmk)(8 Pc)	63-6	1 SET	8.00 Set
22-23E	Steel V/C Bolts 67 327 (RBW Hdmk)(8 Pc)	67	1 SET	8.00 Set
22-23F	Steel V/C Bolts 396/427 (RBW Hdmk)(14 Pc)	65-6	1 SET	15.00 Set
22-23G	Steel V/C Bolts 427 (RBW+SBC Hdmk)(10+4 Pc)	67	1 SET	15.00 Set
22-23GA	Steel V/C Bolts 427+A/C (RBW+SBC Hd Mrk)(9+5)	67	1 SET	15.00 Set
22-23GB	Steel V/c Bolts 427 No Radio (RBW Hdmk)(14)	67	1 SET	15.00 Set
22-24A	Steel V/C Bolt Reinforcements 327 (8 Pc)	63-5	1 SET	8.00 Set
22-24B	Steel V/C Bolt Reinforcements 327 (8 Pc)	66-7	1 SET	8.00 Set
22-24C	Steel V/C Bolt Reinforcements 396/427 (14 Pc)	65-7	1 SET	16.00 Set
22-25A	Valve Cover Gaskets 327 (pr) (cork/rubber)	63-7	1 PR	8.50 Pair
22-25B	Valve Cover Gaskets 396/427 (pr) (cork/rubber)	65-7	1 PR	17.50 Pair



< Temp senders- we can not guarantee calibration.*No returns
- use new #22-17c adjustable resistor to calibrate to gauge (if reads too high only)

Note: A/C stud to be installed tapered end up

Valve Cover Bolts

RBW M RBW

#22-23D/F #22-23B #22-23F/G

#22-22B

#22-22M Clean, no seam

(#21-10B)

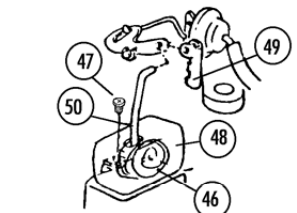
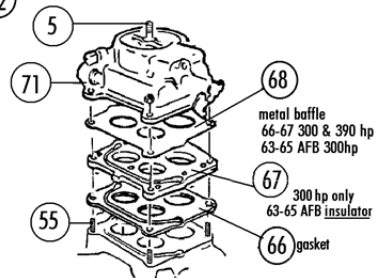
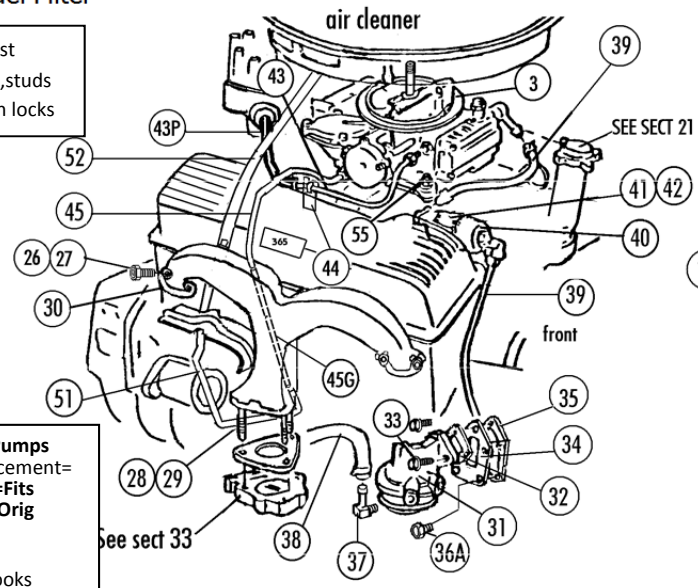
Section# 22 Engine: Exhaust Manifold Bolts ● Fuel Lines , Fuel Pumps ● Fuel Filter

Sec-Part	Name	Year	#need/Car	Price
22-26A	Exhaust Manifold Bolt Set (all 63)	63	1 SET	\$21.00 Set
22-26H	Exhaust Manifold Bolt Set 64-65 FI	64-5	1 SET	21.00 Set
22-26B	Exhaust Manifold Bolt Set (327)	64-7	1 SET	15.00 Set
22-26C	Exhaust Manifold Bolt Set (327 A/C)	64-7	1 SET	26.00 Set
22-26D	Exhaust Manifold Bolt Set (396/427)(16 Pc)	65-7	1 SET	20.00 Set
22-26E	Exhaust Manifold Bolt Set (396/427 P/S)	65-7	1 SET	25.00 Set
22-26F	Exhaust Manifold Bolt Set (427 A/C)	65-7	1 SET	29.00 Set
22-26G	Exhaust Manifold Bolt Set (427)(A/C & P/S)	65-7	1 SET	32.00 Set
22-27	Exh Bolt Special Washers (327/396/427)(8 Pc)	63-7	1 SET	9.00 Set
22-28	Exhaust Manifold Lower Studs (s.s) & Nuts (steel)	63-7	1 SET	28.00 Set
22-29	Exh Manifold Nut Set (6 Pc) (steel)	63-7	1 SET	7.00 Set
22-30A	Exhaust Manifold French Locks (steel)(327)(4)	63	1 SET	15.00 Set
22-30B	Exhaust Manifold French Locks (steel)(327)(4)	64-5	1 SET	15.00 Set
22-30C	Exhaust Manifold French Locks (steel)(327)(4)	66-7	1 SET	15.00 Set
22-30D	Exhaust Manifold French Locks (steel)(396/427)(4)	65-7	1 SET	15.00 Set
22-30AS	Exhaust Manifold French Locks (s.s.)(327)(4)	63	1 SET	15.00 Set
22-30BS	Exhaust Manifold French Locks (s.s.)(327)(4)	64-5	1 SET	15.00 Set
22-30CS	Exhaust Manifold French Locks (s.s.)(327)(4)	66-7	1 SET	15.00 Set
22-30DS	Exhaust Manifold French Locks (s.s.)(396/427)(4)	65-7	1 SET	15.00 Set
22-31B	Fuel Pump Rod (327/396/427)	63-7	1	\$ 22.00
22-31C	Fuel Pump , 63 327 All (replacement) (no Logo)	63	1	\$ 95.00
22-31D	Fuel Pump 64-6 327/250-300hp (replacemt-No Logo)	64-6	1	95.00
22-31E	Fuel Pump 64-5 327/350-375hp (replacement No Logo)	64-5	1	95.00
22-31F	Fuel Pump 66 327/350hp (replacement No Logo)	66	1	95.00
22-31G	Fuel Pump 67 327 All (replacement)	67	1	75.00
22-31H	Fuel Pump 65-6 396/427 (replacement WITH Adapter)	65-6	1	89.00
22-31K	Fuel Pump 67 427 All (40482 No AC)(replacement)	67	1	75.00 NEW
22-31JL	X Fuel Pump(66/427 With Block/after 1/66) (AC 40366)	66L	1	n/a
22-31KE	x Fuel Pump 67E 427, AC Logo, (Aug-Oct66) 40482 block	67E	1	n/a
22-32A	Fuel Pump Mounting Gasket (327/396/427)	63-7	1	\$ 3.25
22-32B	Fuel Pump Rebuild KIT (63All,64-6 250-300)#4657	63-6	1	55.00 kit
22-32C	Fuel Pump Rebuild Kit #40083 (64-66 350-375hp)	64-6	1	55.00 kit
22-33A	Fuel Pump Bolts (327)(2) (RSC Headmark) zinc	63-7	1 PR	3.25 Pair
22-33B	Fuel Pump Bolts (396/427)(2) Black (RSC Hdmk)	65-7	1 PR	3.25 Pair
22-34	Fuel Pump Mounting Plate (327)	63-7	1	12.50
22-35	Fuel Pump Plate Gasket (327)	63-7	1	3.75
22-36A	Fuel Pump Plate Bolts (327)(pr) (E hdmk)	63-7	1 PR	3.00 Pair
22-36B	Plug In Block Under Fuel Pump- 396	65	1	\$7.00
22-36C	Plug In Block Under Fuel Pump- 427	66-7	1	2.50
22-37A	Fuel Pump Tube & Elbow (63 All + 64-6 250-300hp)	63-6	1	19.00
22-37B	Fuel Pump Elbow (350-375hp)	64-7	1	12.00
22-38A	63 Fuel Hose & Tower clamps (to fuel pump) X use22-38B	63	1	xuse B
22-38B	Fuel Hose & Clamps (to fuel pump)	64-7	1	4.50
Fuel Line Sets (with fittings)- yes - steel / magnetic - photos online. (see section 5 frt to rr)				
22-39A	Fuel Line 63-5 327/250hp	63-5	1 SET	30.00 Set
22-39B	Fuel Line Set 63-5 327/300hp	63-5	1 SET	50.00 Set
22-39C	Fuel Line Set 327/340hp (chrome)	63	1 SET	60.00 Set
22-39D	Fuel Line Set 64-65 327/350hp & 365hp (chrome)	64-5	1 SET	60.00 Set
22-39E	Fuel Line Set 63-65 FI (chrome)	63-5	1 SET	64.00 Set
22-39F	Fuel Line 66 327/300hp (chrome)	66	1	44.00
22-39G	Fuel Line 66 327/350hp (chrome)	66	1	44.00
22-39H	Fuel Line 66 427/390hp (steel)	66	1	26.00
22-39J	Fuel Line Set With Y Block 65 427/425hp	66	1 SET	65.00 Set
22-39K	Fuel Line 67 327/300hp (steel)	67	1	25.00
22-39L	Fuel Line 67 327/350hp (steel)	67	1	28.00
22-39M	Fuel Line 67 427/390hp (steel)	67	1	28.00
22-39N	Fuel Line Set With Blocks 427/400hp & 435hp	67	1 SET	80.00 Set
22-39P	Fuel Line Set With Y Block 65 396/425hp	65	1 SET	85.00 Set
22-39Q	Fuel Line Set With Y Block L88	67	1 SET	85.00 Set
22-39R	Y-Block Only 65 396/425 Fuel Line	65	1	35.00
22-39S	Block Only 66 427/425, 67 L88 Fuel Line	66-7	1	35.00
22-39T	Block only for Tripower fuel lines (1)	67	2	35.00 each
22-40A	Fuel Filter Black/GF-90 (no Grooves On Nut)327->	63-5	1	\$ 48.00
22-40A5	Fuel Filter BLACK/GF-90 (With Grooves On Nut) >	65	1	48.00
22-40B	Fuel Filter 396/425hp black/GF-416	65	1	52.00
22-40C	Fuel Filter In Carb (66-67 Holley)	66-7	1-3	6.00
22-40D	Fuel Filter (silver/red GF90)(early 63)	62-3E	1	48.00
22-40E	Fuel Filter In Wcft Carb (63-65 250hp)	63-5	1	6.00
22-40F	Fuel Filter Screen In Afb Carb 63-65 (300-340hp)	63-5	1	6.00
22-41A	Filter Bracket With Stud & Screw (300 Hp/zinc)	63-5	1	18.00
22-41B	Filter Bracket(chrome) W Stud & Screw (327hiper)	63-5	1	19.00
22-42A	Stud, Nut, Washer For Filter Bracket (250,300)	63-5	1	5.00
22-42B	Screw For Fuel Filter Bracket	63-5	1	0.50

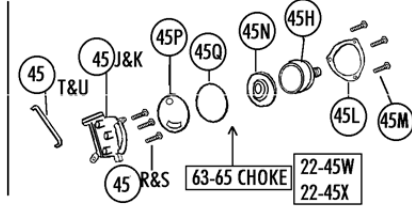
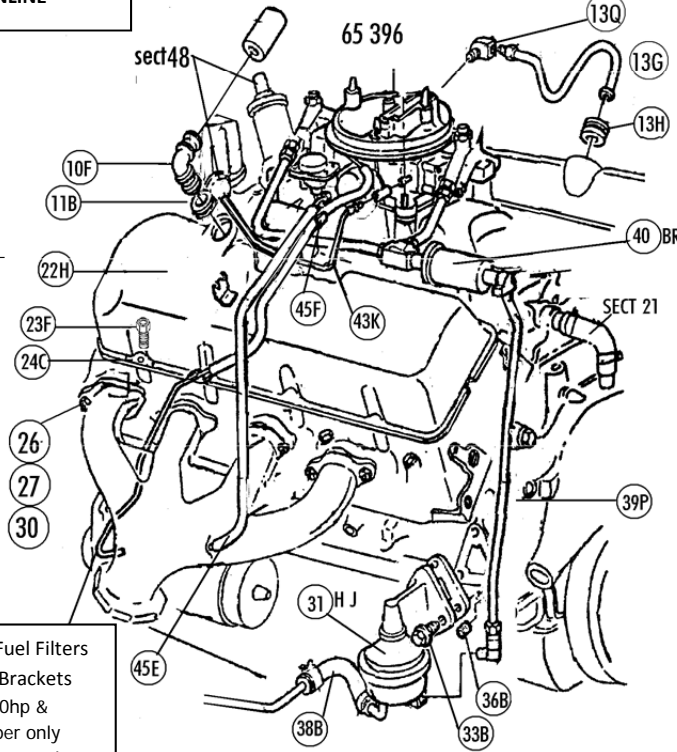
Exhaust bolts ,studs French locks

Fuel Pumps Replacement= New =Fits with Orig Lines, But looks different ie no logo. SEE PHOTOS ONLINE

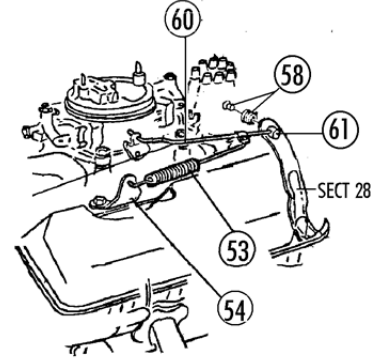
< Fuel Filters & Brackets 300hp & hiper only (Not used on 250hp)



Choke Set #22-50G



Accel Rod, spring, bracket



Section # 22 Engine: Vacuum Lines ●Choke ● Clean Air Tubes ●Accel Springs, Rods, Linkage● Carbs Gaskets●Carburetors (4 pages)

Sec-Part	Name	Year	#need/Car	Price
22-43A	Vacuum Advance Line 250-300hp ('til Jan 64)	63-4	1	20.00
22-43B	Vacuum Advance Line 250-300hp (after Jan 64)	64-5	1	20.00
22-43C	Vacuum Advance Line 340 Hp (chrome)	63	1	24.00
22-43D	Vacuum Advance Line 350-365 Hp (chrome)	64-5	1	25.00
22-43E	Vacuum Advance Line 300 Hp (chrome)	66	1	24.00
22-43F	Vacuum Advance Line 350 Hp (chrome)	66	1	24.00
22-43G	Vacuum Advance Line 390, 425 Hp	66-7	1	20.00
22-43H	Vacuum Advance Line 400, 435 Hp (chrome)	67	1	27.00
22-43J	Vacuum Advance Line 63 FI	63	1	29.00
22-43K	Vacuum Advance Line 396/425 Hp	65	1	24.00
22-43L	Vacuum T & Hose Set (Tripower) (1+3)	67	1	10.00
22-43M	Vacuum Advance Line 300 Hp	67	1	20.00
22-43N	Vacuum Advance Line 350 Hp	67	1	20.00
22-43P	Vacuum Hose (with Ribs & White Stripe)	63-7	1	3.00
22-43Q	Adapter only - vac line to carb 63-65 only(notFI)	63-5	1	3.00
22-44	Clip- Vacuum Advance Line	63-7	1	5.00
22-44B	Clip For FI Vacuum Adv Line	63	1	12.00

Accel linkage >
< Vac lines

Sec-Part	Name	Year	#need/Car	Price
Choke: Choke Tubes – Choke coil, Rods,				
22-45A	Choke Tube 250-300 Hp	63-5	1	16.00
22-45B	Choke Tube 340 Hp (chrome)	63	1	20.00
22-45C	Choke Tube 350-365 Holley (chrome)(not magnetic)	64-5	1	25.00
22-45D	Choke Tube FI (chrome)	63-5	1	N/A
22-45DS	Choke Tube FI magnetic steel (not chrome)	63-5	1	25.00
22-45E	Choke Tube & Correct Insulator (396)	65	1	35.00
22-45F	Clip for 396 Choke/clean Air Tube Clip	65	1	15.00
22-45G	Choke Tube In Exhaust Manifold	63-5	1	17.00
22-45H	Choke Cover For Carter Carb (WCFB,WAFB) \$	63-5	1	39.00
22-45J	Choke Housing & Piston Asm (WCFB)(used) (250hp)	63-5	1	75.00 Used
22-45K	Choke Housing & Piston Asm (AFB) (300-340hp) N/A	63-5	1	N/A
22-45L	Choke Cover Retainer (carter Wcfb & Afb)	63-5	1	7.50
22-45M	Choke Cover Screws (carter Wcfb & Afb)(3)	63-5	1 SET	2.00 Set
22-45N	Choke Coil & Zinc Plate (Carter WCFB & AFB)	63-5	1	60.00
22-45P	Choke Slotted Plate (carter Wcfb & Afb)	63-5	1	10.00
22-45Q	Choke Cover Gasket (Carter Wcfb & Afb)	63-5	1	3.00
22-45R	Choke Housing Mounting Screws (wcfb)(3)	63-5	1 SET	2.00 Set
22-45S	Choke Housing Mounting Screws (afb)(3)	63-5	1 SET	2.00 Set
22-45T	Choke Rod & Clip (wcfb) (250hp)	63-5	1	9.00
22-45U	Choke Rod & Clips (afb) (300-340hp)	63-5	1	9.00
22-45W	Choke Assembly (carter Wcfb) (J,H,L,M,N,P,Q,R,T)	63-5	1	\$206.00
22-45X	Choke Assembly (carter Afb)see K,h,l,m,n,p,q,s,u	63-5	1	N/A
22-46A	Choke Thermostat (64-5/350-365hp)or(65/396) Coil, Black Cover & Gasket	\$	49.00	
22-46B	Retainers & Screws For Choke (2818 64-5 350-365)	64-5	1 SET	9.00 Set
22-46C	Screws For 396 Choke Cover (3)	65	1 SE	2.00 Set
22-46D	Choke Base (housing)(2818,3124)	64-5	1	70.00
22-46	Choke Coil (for Holley 66-67)	66-7	1	21.00
22-47	Choke Coil Screw	66-7	1	0.50
22-48	Choke Coil Cover	66-7	1	6.50
22-49	Choke Rod Clip	63-7	1	2.00
22-50A	Choke Rod 66-67 300 Hp	66-7	1	9.00
22-50B	Choke Rod 66-67 350 Hp	66-7	1	9.00
22-50C	Choke Rod 66 390 Hp	66	1	9.00
22-50D	Choke Rod 66425 Hp	66	1	9.00
22-50E	Choke Rod 67 390 Hp	67	1	9.00
22-50F	Choke Rod Tripower	67	1	9.00
22-50G	Choke Set (46,47,48,49,50)(state Year & Engine)	66-7	1 SET	38.00 Set
22-50H	Choke Rod Washer (66/425 + L88)	66-7	1	0.50
22-51A	Clean Air Tube With Hose	63	1	33.00
22-51B	Clean Air Tube With Hose	64-5	1	33.00
22-51C	Clean Air Tube FI With Hose	63-5	1	33.00
22-51D	Clean Air Tube 396 With Hose	65	1	28.00
22-51E	Stud & Nut For Clean Air Tube 63 Or 63-5 Fi	63-5	1	6.00
22-52A	Clean Air Hose (327)	63-5	1	2.75
22-52B	Clean Air Hose (396)	65	1	2.50
22-53A	Accel Return Spring 327	63-7	1	6.00
22-53B	Accel Return Spring 340 Hp	63	1	7.00
22-53C	Accel Return Spring All 67 Auto (pr)(Green)	67	1 PR	11.00 Pair
22-53D	Accel Return Spring 396/427	65-7	1	6.00
22-53E	Accelerator Return Spring- FI (blue)	63-5	1	7.00

Spark plugs >

< Choke
Carb
Mounting
Gaskets >

Holley Carbs
>new, Not Old
Dates no %
NO Warrantee.14
Days To Inspect

Sec-Part	Name	Year	#need/Car	Price
22-54A	Accel Return Spring Bracket 327 (steel, yes)	63-7	1	10.00
22-54B	Accel Spring Bracket 396/427 (Steel, yes)	65-7	1	10.00
22-54C	Accel Spring Bracket (FI)	63-5	1	15.00
22-55A	Carb Mtg Stud & Nut Set (exc 63-5 300hp) (4+4)	63-7	1 SET	6.00 Set
22-55B	Carb Mtg Stud, Nut & Bolt Set (Tripower)	67	1 SET	12.50 Set
22-55C	Carb Mounting Long Stud & Nut Set (63-5 300 Hp)	63-5	1 SET	4.00 Set
22-58	Accel Rod Bushing & Grommet Set (2+2)	63-7	1 SET	4.00 Set
22-60A	Accelerator Rod- 63-65 327	63-5	1	16.00
22-60B	Accelerator Rod- 396	65	1	25.00
22-60C	Accelerator Rod- 66-67 327	66-7	1	16.00
22-60D	Accelerator Rod- 427/390hp (66 All,67 4 Spd)	66-7	1	30.00
22-60E	Accelerator Rod- Tripower (4 Spd)(Gold Color)	67	1	30.00
22-60F	Accelerator Rod- 427/425hp	66	1	30.00
22-60G	Accelerator Rod- FI	63-5	1	30.00
22-60H	Accelerator Rod- 427/390 (auto)	67	1	30.00
22-60J	Accelerator Rod- 427/400 (auto)(gold Color)	67	1	30.00
22-61	Accel Swivel + Cotter Pins (1 + 2)	63-7	1 SET	5.00 Set
22-62	Carb Linkage set 67 Tripower (Gold Color)(2rods,ends,clips.bushing)67			45.00 set
22-63A-C	xCarb Tags no X	63	1	N/A
22-64	Distributor Holddown (see 48-36)			
22-65A	Spark Plugs 327 AC R43(replacement AC44)(8 PC)Delco	63-7	1 SET	27.00 Set
22-65B	Spark Plugs 327 (city) (AC R45)(8 Pc) Delco	63-7	1 SET	27.00 Set
22-65D	Spark Plugs 327 (AC44)(8 Pc) (4 grn stripes)repr	63-7	1 SET	65.00 Set
22-65E	Spark Plugs 327City (AC45)(8)(4 Green stripe)repro	63-7	1 SET	65.00 Set
22-65F	Spark Plugs 396/427 R43XLS, Delco repl for AC43	65-7	1 SET	27.00 set
22-65Z	Spark Plug Washers (8)	63-7	1 SET	6.00 Set
22-66A	Carb Base Gasket (wcfb)(250hp)	63-5	1	7.50
22-66B	Carb Base Gasket (300hp/afb)	63-5	1	7.50
22-66C	Carb Base Gasket (327/300,427/390hp)(use Baffle)	66-7	1	7.50
22-66D	Carb Base Gasket (327/350-365)	64-7	1	7.50
22-66E	Carb Base Gasket (Holley Tripower)(3 Pc)	67	1 SET	15.00 Set
22-66F	Carb Base Gasket (396-427/425-450hp, L88)	65-7	1	7.50
22-66G	Carb Base Gasket (340/AFB)	63	1	7.50
22-67	Carb Insulator (AFB 300hp)(over Gasket)	63-5	1	28.00
22-68A	Carb Metal Heat Baffle (s.s.)(AFB 300hp)	63-5	1	11.00
22-68B	Carb Metal Heat Baffle (300,390hp)(on Gasket)	66-7	1	17.00
22-69	LOOK ONLINE SITE > Valve Push Rod ... A B C TYPE IN 22-69			
22-70A -L	Rocker Arm, Ball, & Nut , VALVE SPRING & CAP ... LOOK ONLINE. TYPE IN 22-70			
>Holley Carbs are New, Not Old Dates no Discounts NO Warrantee.14 Days To Inspect				
22-71D	Carburetor- Holley 1966 300,350hp (3367)(new)	66	1	\$ x n/a
22-71E	X Carburetor- Holley 1967 300,350hp (3810)(new) X	67	1	x N/A
22-71F	Carburetor- Holley (outer 3x2)(3659) (new) last 1	67	2	\$ 440.00 Each
22-71G	x Carburetor- Holley (3x2 Center)(3660)(new)x	67	1	
22-71H	x Carburetor- Holley (67 390hp)(3811)(new) x	67	1	
22-71K	x Carburetor- Holley (66 425hp)(3247) (new) x	66	1	n/a
22-71N	Carburetor- Holley (427/390)(3370)(new Holley)	66	1	n/a
22-72D	Fuel Inlet Fitting- Holley Carb (5/16"line) (all 327;65-6 427/425,430,450hp)1	12.00		
22-72E	Fuel Inlet Fitting in carb (63-5 AFB)	63-5	1	15.00
22-72F	Fuel Inlet Fitting- 427 Holley Carb (3/8"line) (66-7 390,400,435hp) 66-71-3	15.00	Each	
22-72L	Fuel Inlet Fitting & Retainer (327/350-365hp)	64-5	1 SET	20.00 Set
22-72M	Fuel Inlet Fitting (wcfb)	63-5	1	15.00
22-72A	Carb Rebuild Kit (same kit all WCFB/AFB)	63-5	1	\$ 52.00
Holley Carb Rebuild Kits > (KB=brand) 10% Ethanol compatible				
22-72G	Carb Rebuild Kit (64-5 350-365hp)(Holley 2818)KB	64-5	1	49.00
22-72J	Carb Rebuild Kit (66 327/300-350hp)(3367)(KB)	66	1	49.00
22-72N	Carb Rebuild Kit (67 300&350hp)(Holley 3810)(KB)	67	1	49.00
22-72P	Carb Rebuild Kit (66 390hp)(Holley 3370)(KB)	66	1	45.00
22-72Q	Carb Rebuild Kit (67 390hp) Holley 3811 (KB)	67	1	45.00 Each
22-72R	Carb Rebuild Kit (65 396/425hp) (Holley 3124)KB	65	1	49.00
22-72S	Carb Rebuild Kit (66 425hp)(Holley 3247) KB	66	1	49.00
22-72T	Carb Rebuild Kit 3X2/Outer (Holley 3659) KB	67	2	40.00 EACH
22-72U	Carb Rebuild Kit 3X2/Center (Holley 3660) KB	67	1	45.00 EACH
22-73A	3x2 Secondary Carb Diaphragm Kit (dia,cover,base ...)	67-9	2	\$ 89.00 Each
22-74A	Holley Float Bowl Correct Slotted Screws (4+4)	64-7	1 SET	16.00 Set
22-74B	Holley 3x2 Carb Float Bowl Slotted Screws (8+4)	67	1 SET	24.00 Set