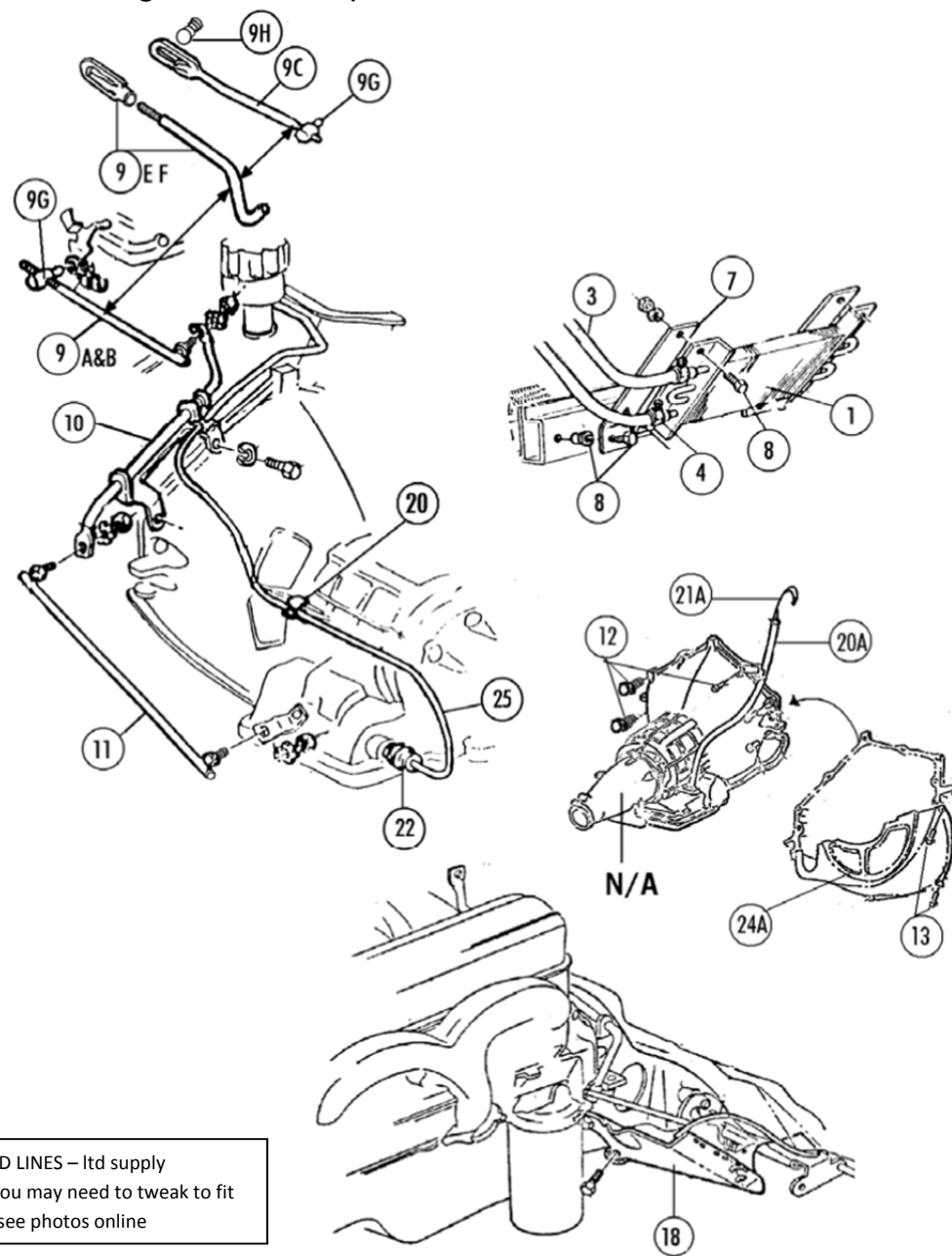


Section 58 Powerglide: Auto Transmission Cooler • Kick Down Linkage • Trans Dipsticks•Modulator Lines

Sec-part Name	Year	#need/car	Price
58-01 Auto Trans Cooler (327)(good Replacement)	63-7	1	\$ 95.00
58-02A Steel Lines (327)(pr) (Auto Trans Cooler)	63-7	1 PR	69.00 Pair
58-02B Steel Lines (427)(4 Pc) (auto Trans Cooler)	66-7	1 SET	85.00 Set
58-03A Auto Trans Cooler Hoses (327)(pr)	63-7	1 PR	20.00 Pair
58-03B Auto Trans Cooler Hoses (427)(pr)	66-7	1 PR	20.00 Pair
58-04 Auto Trans Cooler Hose Clamps (4 Pc)	63-7	1 SET	20.00 Set
58-05 A/T Cooler Line Clips (hold Lines Together)(3 Pc)	63-7	1 SET	12.00 Set
58-06 A/T Cooler Line Clamps & Bolts (RBW) (to Frame)	63-7	1 SET	3.50 Set
58-07A Auto Trans Cooler Brackets (327)(pr)	63-5	1 PR	12.00 Pair
58-07B Auto Trans Cooler Brackets (327)(pr)	66-7	1 PR	12.00 Pair
58-08 A/T Cooler Bolt (RBW), Nut & Anchor Set (327)	63-7	1 SET	7.50 Set
58-08B Cooler T-nut Installation Tool (rental=\$15/wk)	63-7	1	55.00
(\$40 deposit Refunded When Returned by 2 weeks included in deposit, then \$15/eachadd'lwk)			
58-09A Auto Kick Down Rod- Upper 63-65 250hp	63-5	1	\$ 40.00
58-09B Auto Kick Down Rod- Upper 63-65 300hp	63-5	1	40.00
58-09C Auto Kick Down Rod- Upper 66-67 327	66-7	1	40.00
58-09E Auto Kick Down Rod- Upper 66-67 427/390hp)(2 Pc)	66-7	1	90.00
58-09F Auto Kick Down Rod- Upper 67 427/400hp (2 Pc)	67	1	90.00
58-09G Swivel and Clip for 327 Auto Kick Down Upper Rod	63-7	1	7.50
58-09H Swivel Stud On Carb With Auto (327/427)	66-7	1	10.00
58-10 Auto Kick Down Crank Assembly	63-7	1	55.00
58-11A Auto Kick Down Swivel Rod- Lower (327)	63-7	1	35.00
58-11B Auto Kick Down Swivel Rod- Lower (427)	66-7	1	35.00
58-12 Powerglide To Engine Mounting Bolts (repl)	63-7	1 SET	\$ 3.00 Set
58-13 Inspection Plate Bolts (powerglide)(4)	63-7	1 SET	4.00 Set
58-18 Powerglide Linkage Metal & Rubber Shield	66-7	1	\$ 135.00
58-19B Powerglide Master Kit (19A+brake Band, valve Body Suction Screen)	63-7	1	\$ 140.00
58-19C Powerglide Filter & Pan Gasket	63-7	1	14.00
58-20A Powerglide Dipstick Tube (327) Or (66 Early 427)	63-7	1	35.00
58-20B Powerglide Dipstick Tube(427 After 11/65)	66L-7	1	35.00
58-20C P/G Modulator Line Clips To Dipstick Tube(repl)	67	1 PR	7.00 Pair
58-20D Clips To Pg Crank & Case For Modulator Line	63-5	1 PR	7.00 Pair
58-20E Clips To Pg Crank & Case For Modulator Line	66	1 PR	7.00 Pair
58-21A Powerglide Dipstick 63-67 Early/327)(til 12/66)	63-7E	1	50.00
And 66E 427 Til 11/65)			
58-21B Powerglide Dipstick (67 Late/327)(after Dec 66)	67L	1	50.00
58-21C Powerglide Dipstick (66 Late/427)(after Nov 65)	66L	1	50.00
58-21D Powerglide Dipstick (67/427)	67	1	50.00
58-22A Modulator	63-7	1	32.00
58-22B Modulator Gasket	63-7	1	2.00
58-24A Powerglide Inspection Metal Pan (except 427)	63-7	1	\$ 75.00
>> please look at photo online.			
58-24B xPowerglide Inspection Pan (exc 427)(plastic Repl)	63-7	1	N/A
58-24C xPowerglide Inspection Pan (66-7/427 Only)(metal)	66-7	1	N/A
58-25A Modulator Line (63 Thru Jan 64) (welded T)	63-4E	1	\$ 65.00
58-25B Modulator Line (after Jan 64)(welded T) - no more -	64L-5	1	n/a
58-25C Modulator Line (2 Pc)	66	1	65.00
58-25E Modulator Line	67	1	65.00
58-27 Powerglide Rear Yoke Seal	63-7	1	\$ 9.75
58-28A Powerglide Transmission Fluid Pan (used)/W Drain	63-7	1	75.00
Flexplate (auto Flywheel)(see 28-61D&E)			
58-28B Powerglide Transmission Fluid Pan Screws (14)	63-7	1 SET	20.00 Set
58-28C Powerglide Drain Plug & Seal (A Headmark)	63-7	1	10.00
58-28D Powerglide Magnetic Drain Plug & Seal (correct Head)	63-7	1	15.00
58-29 Powerglide Range Selector Levers & Shafts(rebuilt serv)	63-7	1 PR	\$ 150.00 serv



MOD LINES – ltd supply
& you may need to tweak to fit
<< see photos online