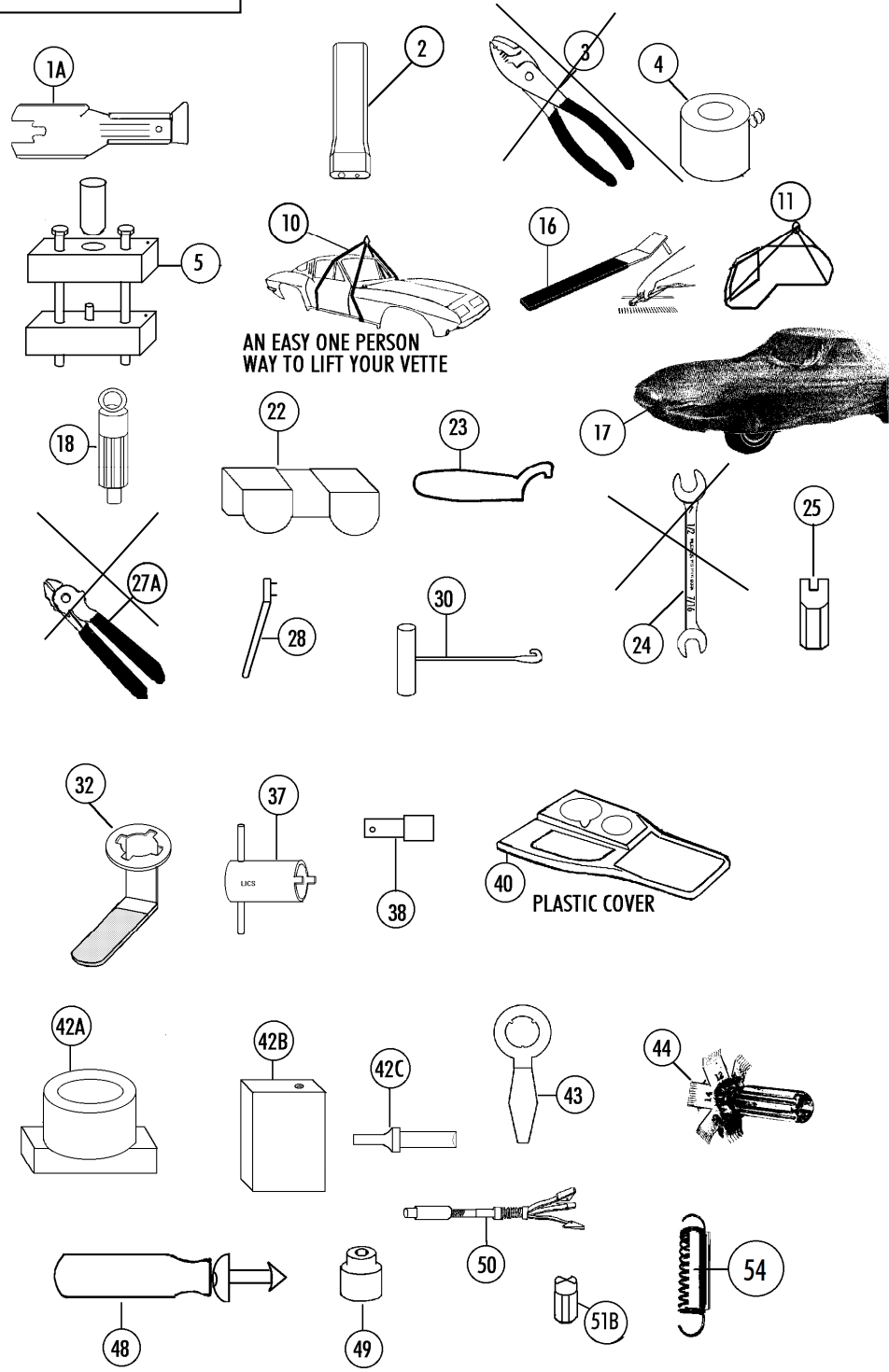


Section #55 Tools And Accessories, Car covers-

NO RETURNS ON ANY TOOLS

Sect-Part#	name	year	Price	
55-01A	Window Crank Clip Removal Tool	1	5.00	
55-02A	Rivet Setting Tool (for 3/16" Aluminum Rivets)	1	33.00	
55-02B	Rivet Setting Tool (for 1/8" Aluminum Rivets)	1	33.00	
55-02C	Rivet Setting Tool (for 1/8-3/16" semitubular Riv)	1	12.00	
55-03	Pliers For Corbin Spring Hose Clamp x	1	N/A	
55-04	Rear Spindle Greasing Tool	1	25.00	
55-05	Torque Arm Bushing Installation Tool	1	85.00	
55-06	Rear Spindle Removal Tool	1	20.00	
55-07	Rear Shock Bracket Removal Tool	1	25.00	
55-09A	Wire Terminal Double Crimping Tool	1	34.00	
55-09B	Wire Terminal Double Crimping Tool- Deluxe	1	50.00	
55-10	Body Lift Strap Kit	1	85.00	
55-11	X Hard Top Hoist Strap Kit	63-7	1	N/A
55-16	Windshield Wiper Arm Removal Tool	63-7	1	9.00
55-17C	Car Cover (gray 4 Layer Breathable fabric)(in/outdoor)rain/sun	63-7	1	85.00
55-18	Clutch Pilot Tool(for Aligning 10 Spline Clutch)	63-7	1	5.00
55-22	Caliper Pad Clip (holds Pistons In To Install Caliper And Brake Pads)(pr)	65-7	1 PR	16.00 Pair
55-23	63-64 Antenna Nut Spanner Wrench	63-4	1	9.00
55-24	x Hard Top Wrench (for Glove Box)	63-7	1	discontinued
55-24B	Draw String Cloth Bag (for Hard Top Wrench)	63-7	1	4.75
55-25	Special Screwdriver Tip For Visor Nuts	1	7.50	
55-27A	x Hog Ring Pliers (for Seat Cover Installation)	1	discontinued	
55-27B	Hog Rings (for Attaching Seat Covers (100pc)	1 SET	5.00	Set
55-28	Wrench For Hard Top Window Special 2-hole Screw	64-7	1	9.50
55-29	Battery Charger- Auto Level Adjusting "float" (leave It On- It Will Not Over Charge Battery!)	1	22.00	
55-30	Seat Cover Installation Tool	63-7	1	10.00
55-32	Gas Tank Sender Removal Tool	63-82	1	24.00
55-37	Wrench- HL Sw,heater Cable Nut & Ww Switch Nut	63-7	1	13.00
55-38	Hood Support Pin (prevents Hood Closing In Wind)	63-7	1	10.00
55-39A	Steering Wheel Hub Puller x	1	N/A	
55-39B	Harmonic Balancer/ Steering Wheel Hub Puller X	1	N/A	
55-40	Console Protector/cup Holder (clear Plastic)	63-7	1	44.00
55-40P	PW Console Protector/cup Holder (Plastic)	63-7	1	44.00
55-42A	Upper Ball Joint Riveting Fixture	1	60.00	
55-42B	Lower Ball Joint Riveting Fixture	1	40.00	
55-42C	Air Hammer Riveting Bit (for Steel Rivets)	1	20.00	
55-43A	Ignition Switch Nut Wrench (3 Tabs)	63-5	1	9.00
55-43B	Ignition Switch Nut Wrench (4 Tabs)	66-7	1	9.00
55-44	Fin Comb(straighten Fins On Radiator, Condensor)	1	22.00	
55-45	Rear Spindle Shim Set Up Tool	63-82	1	99.00
55-47	Spark Plug Gapping Gauge (ac)(pocket Size)	1	2.00	
55-48	Firewall Insulation Plug Installation Tool	1	5.00	
55-49	Front Shock Absorber Socket (3/8" Drive)	1	5.00	
55-50	Brake Cylinder/master Cylinder Hone(1/2"-2-1/4")	1	15.00	
55-50B	Replacement Stones For Hone	1 SET	6.00	Set
55-51	Clutch Head Screwdriver (5/32") (use 55-51b)	63	1	N/A
55-51B	Clutch Head Screw Bit (5/32")	63	1	3.00
55-52	Tool to push Tach/speedo Cable Thru Grommet (for 37-16B & 16C)	63-4	1	7.00
55-53A	327 Oil Pickup Installation Tool	1	8.00	
55-53B	427 Oil Pickup Installation Tool	1	8.00	
55-54	Top Compartment Spring Tool	63-7	1	18.00



AN EASY ONE PERSON WAY TO LIFT YOUR VETTE

PLASTIC COVER

NO RETURNS ON ANY TOOLS