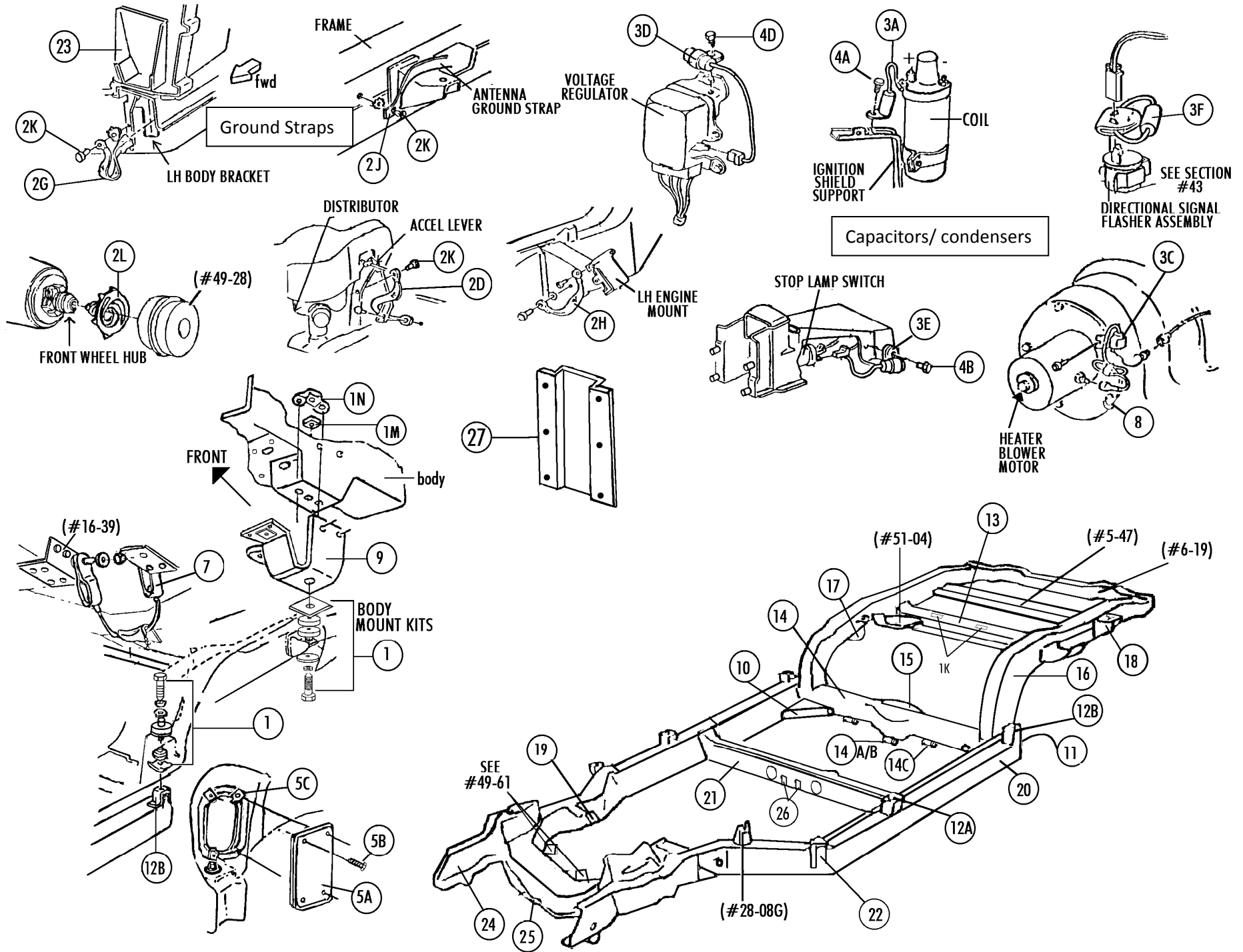


Section #53 Body Mounts • Ground Straps • Capacitors • Frame & Brackets



Section #53 Body Mounts ● Ground Straps ● Capacitors ● Frame & Brackets

| Sec-Part# | Name | Year | #Need | /Car Price |
|---|---|------|-------|------------|
| Body Mounting Kits ---WB Headmarks | | | | |
| (Include All Rubber Mounts, Shims, Blocks, Bolts, Spacers, Washers, As Required /Yr) | | | | |
| Sec-Part# | Name | Year | #Need | /Car Price |
| 53-01A | Body Mounting Kit- Coupe & Roadster | 63 | 1 | 65.00 |
| 53-01B | Body Mounting Kit- Coupe | 64 | 1 | 85.00 |
| 53-01C | Body Mounting Kit- Roadster | 64 | 1 | 85.00 |
| 53-01L | Body Mounting Kit Addition For 64 After 4/21/64 | 64 | 1 | 20.00 |
| 53-01F | Body Mounting Kit- Coupe | 65-7 | 1 | 85.00 |
| 53-01G | Body Mounting Kit- Roadster | 65-7 | 1 | 85.00 |
| 53-01H | Body Mounting Shims (square) | 63-7 | - | 2.50 EACH |
| 53-01J | Body Mounting Shim (u Shape) | 63-7 | - | 2.50 EACH |
| 53-01K | Body Mount Rectangular Rubber Blocks (pr) | 63 | 1 PR | 12.00 PAIR |
| 53-01L | Body Mounting Kit Addition For 64 After 4/21/64 | 64 | 1 | 20.00 |
| 53-01M | Body Mount Large Square Nuts (pr) | 63-7 | 1 PR | 6.00 PAIR |
| 53-01N | Nut Cage & Rivets (at Body Mount #4) | 63-7 | 2 | 7.50 EACH |
| 53-01P | Aluminum #1 Body Mount Spacer (roadsters Only) | 64-7 | 1 PR | 9.50 PAIR |
| 53-01Q | Body Mount Lower Cushion | 64-7 | 6 | 7.50 EACH |
| 53-01R | Body Mount Upper Cushion | 64-7 | 6 | 2.50 EACH |

Ground Straps

| | | | | |
|--------|---|------|-------|------------|
| 53-02A | Ground Strap Set (63 Only) | 63 | 1 SET | 27.00 SET |
| 53-02B | Ground Strap Set (without Side Exhaust) | 64-7 | 1 SET | 23.00 SET |
| 53-02C | Ground Strap Set (with Side Exhaust) | 65-7 | 1 SET | 18.00 SET |
| 53-02D | Accelerator Lever Ground Strap | 63-7 | 1 | 7.00 |
| 53-02E | Exhaust At Center Hanger Gnd Strap | 63 | 1 | 5.00 |
| 53-02F | Exhaust At Center Hanger Gnd Strap | 64-7 | 2 | 5.00 EACH |
| 53-02G | Body To Frame Ground Strap | 63-7 | 1 | 7.00 |
| 53-02H | Engine To Frame Ground Strap | 63-7 | 1 | 7.00 |
| 53-02J | Antenna Ground Strap | 63-7 | 1 | 4.75 |
| 53-02K | Ground Strap Bolt (e) And Lw Set (set Of 7) | 63-7 | 1 SET | 5.25 SET |
| 53-02L | Front Wheel Static Collector (1) | 63-7 | 2 | 16.00 EACH |

see section 43-02 for A/C ground wires.

Radio Capacitors – correct with DR and number see photos online

| | | | | |
|-------------------|--|-------|------|------------|
| 53-03A3 | Capacitor On Coil Bracket 327 | 63-5 | 1 | \$20.00 |
| 53-03A7 | Capacitor On Coil Bracket 327 | 66-7 | 1 | 20.00 |
| 53-03B | Capacitor On Coil Bkt (390hp No Ti After 10/65) | 66-7 | 1 | 20.00 |
| 53-03C | Capacitor On Heater Blower Motor (replacement) | 64-7 | 1or2 | 45.00 EACH |
| 53-03C3 | Capacitor On Heater Blower Motor (replacement) | 63 | 1 | 45.00 |
| 53-03D3 | Capacitor On Voltage Regulator | 63-4 | 1 | 20.00 |
| 53-03D5 | Capacitor On Voltage Regulator | 65-7 | 1 | 20.00 |
| 53-03E | Capacitor On Brake Light Switch | 64-7 | 1 | 25.00 |
| 53-03F | Capacitor On Directional Blinker Am/fm | 63L-7 | 1 | 25.00 EACH |
| 53-03G | Capacitor On Ammeter (behind Dash) | 63-7 | 1 | 20.00 |
| 53-03H | Capacitor With Plug (behind Dash Near Ign Sw) | 63-7 | 1 | 20.00 |
| 53-03J | Capacitor With Plastic Clip (e/b Behind Dash) | 64-7 | 1 | 25.00 |
| 53-03K | Capacitor On Pkg Brake Switch & Brake Light Sw | 63 | 2 | 20.00 EACH |
| 53-03L | Capacitor On Am Directional Switch (before 1/63) | 63 | 1 | 20.00 |
| 53-03M | Capacitor In Alternator | 63-7 | 1 | 20.00 |
| 53-03N | Capacitor In Distributor (with Dr & Number) | 63-7 | 1 | 20.00 |
| >Capacitor Screws | | | | |
| 53-04A | Screw- Capacitor On Coil Bracket (327/427) | 63-7 | 1 | 0.50 |
| 53-04B | Screw- Capacitor On Brake Switch | 64-7 | 1 | 0.75 |
| 53-04D | Screw- Capacitor On Voltage Regulator | 65-7 | 1 | 0.50 |
| 53-04E | Screw For Ground Wire To Radiator Support | 63-7 | 1 | 0.75 |

Rear Access Plate

| | | | | |
|--------|---|------|-------|--------------|
| 53-05A | Rear Body Mount Access Plate | 63-7 | 2 | \$10.00 EACH |
| 53-05B | Access Plate Screw With Att Ext Lw (8) | 63-7 | 1 SET | 6.00 SET |
| 53-05C | U-nut Set For Rear Access Plates (set Of 8) | 63-7 | 1 SET | 2.00 SET |

Seat Belt Cables

| | | | | |
|--------|---|------|-------|-------------|
| 53-07B | Seat Belt Cable And Hardware Set (3 Cables) | 65-7 | 1 SET | \$90.00 SET |
| 53-07D | Hardware For Seat Belt Cables | 65-7 | 1 SET | 3.50 SET |
| 53-07E | Seat Belt Center Cable | 65-7 | 1 | 30.00 |
| 53-07F | Seat Belt Outer Cables | 65-7 | 2 | 35.00 EACH |
| 53-07G | Shoulder Harness Cables (with N03) | 66-7 | 1 PR | 100.00 PAIR |
| 53-08 | Ground Terminal On Blower Motor | 64-7 | 1 | 3.00 |

(for #'s In () See That Sect # - Part #

| Sec-Part# | Name | Year | #Need | /Car Price |
|----------------------------------|--|------|-------|------------|
| Body Mount Reinforcements | | | | |
| 53-09A | Body Mount #4 Reinforcement- All Lh | 63 | 1 | 30.00 |
| 53-09B | Body Mount #4 Reinforcement- All Rh | 63 | 1 | 30.00 |
| 53-09C | Body Mount #4 Reinforcement- Coupe Lh | 64-7 | 1 | 30.00 |
| 53-09D | Body Mount #4 Reinforcement- Coupe Rh | 64-7 | 1 | 30.00 |
| 53-09E | Body Mount #4 Reinforcement- Roadster Lh | 64 | 1 | 30.00 |
| 53-09F | Body Mount #4 Reinforcement- Roadster Rh | 64 | 1 | 30.00 |
| 53-09G | Body Mount #4 Reinforcement- Roadster Lh | 65-7 | 1 | 30.00 |
| 53-09H | Body Mount #4 Reinforcement- Roadster Rh | 65-7 | 1 | 30.00 |

Frame Sections & Brackets On Frame

| | | | | |
|---------|--|-------|------|------------|
| 53-10A | Frame Corner Gusset- Lh | 65-7 | 1 | 20.00 |
| 53-10B | Frame Corner Gusset- Rh | 65-7 | 1 | 20.00 |
| 53-10C | Gusset- Lh Or Rh (after 4/21/64) | 64L | 2 | 20.00 EACH |
| 53-11 | Frame Main Rail End Plate | 63-7 | 2 | 5.00 EACH |
| 53-12A | Body Mount Bracket & Nut #2 (roadster Only) (under Door Sil) | 64-7 | 2 | 25.00 EACH |
| 53-12A3 | Body Mount Bracket & Nut #2 (coupe & Roadster) | 63 | 2 | 40.00 EACH |
| 53-12B | Body Mount Bracket #3 (in Front Of Rear Wheel) | 64-7 | 2 | 25.00 EACH |
| 53-12B3 | Body Mount Bracket #3(in Front Of Rear Wheel) | 63 | 2 | 40.00 EACH |
| 53-12C | Cage For Body Mount #2 Or #3 (included With A&B) | 63-7 | 2-4 | 7.00 EACH |
| 53-13 | #4 Frame Crossmember (welds On)(over Rear Axle) | 63-7 | 1 | 219.00 |
| 53-14 | #3 Frame Crossmember (welded)(2nd From Rear) | 63-7 | 1 | 359.00 |
| 53-14A | Seat Belt Cable Clamp (weld To Crossmember #14) | 65-6 | 1 | 24.00 |
| 53-14B | Seat Belt Cable Clamp (weld To Crossmember #14) | 66L-7 | 1 | 24.00 |
| 53-14C | Frame Brackets For Center Body Mounts (pr) | 63-4 | 1 PR | 39.00 PAIR |
| 53-15 | Pinion Snubber Bracket(weld To Crossmember)(nos) | 63-7 | 1 | 60.00 |
| 53-16A | Frame Rear Kick-up Assembly With Brackets- Lh | 63 | 1 | \$ 579.00 |
| 53-16B | Frame Rear Kick-up Assembly With Brackets- Rh | 63 | 1 | \$ 579.00 |
| 53-16C | Frame Rear Kick Up Assembly With Brackets- Lh | 64 | 1 | \$ 579.00 |
| 53-16D | Frame Rear Kick Up Assembly With Brackets- Rh | 64 | 1 | \$ 579.00 |
| 53-16E | Frame Rear Kick-up Assembly With Brackets- Lh | 65-7 | 1 | \$ 579.00 |
| 53-16F | Frame Rear Kick-up Assembly With Brackets- Rh | 65-7 | 1 | \$ 579.00 |
| 53-17A | Rear Axle Bumper Bracket (weld To Frame) | 63-4L | 2 | 39.00 EACH |
| 53-17B | Rear Axle Bumper Bracket (weld To Frame)- Lh | 64L-7 | 1 | 32.00 EACH |
| 53-17C | Rear Axle Bumper Bracket (weld To Frame)- Rh | 64L-7 | 1 | 32.00 |
| 53-18A | #4 Body Mount Bracket (weld To Frame) | 63 | 2 | 39.00 EACH |
| 53-18B | #4 Body Mount Bracket (weld To Frame) | 64-7 | 2 | 36.00 EACH |
| 53-19A | Motor Support Bracket- Lh(weld To Frame) | 63-7 | 1 | 89.00 |
| 53-19B | Motor Support Bracket- Rh(weld To Frame) | 63-7 | 1 | 89.00 |

(Repair Sections Include Internal Alignment Sleeve + end plate (#53-20J, 53-11 To attach to Existing Frame)

| | | | | |
|--------|--|------|------|------------|
| 53-20A | Repair Section In Front Of Rear Wheel(23")-lh | 63-4 | 1 | \$ 119.00 |
| 53-20B | Repair Section In Front Of Rear Wheel(23")-rh | 63-4 | 1 | 119.00 |
| 53-20C | Repair Section In Front Of Rear Wheel(23")-lh | 65-7 | 1 | 119.00 |
| 53-20D | Repair Section In Front Of Rear Wheel(23")-rh | 65-7 | 1 | 119.00 |
| 53-20E | Repair Section In Front Of Rear Wheel(48")- Lh | 63-4 | 1 | 174.00 |
| 53-20F | Repair Section In Front Of Rear Wheel(48")- Rh | 63-4 | 1 | 174.00 |
| 53-20G | Repair Section In Front Of Rear Wheel(48")- Lh | 65-7 | 1 | 174.00 |
| 53-20H | Repair Section In Front Of Rear Wheel(48")- Rh | 65-7 | 1 | 174.00 |
| 53-20J | Internal Alignment Sleeve (6") | 63-7 | - | 19.00 EACH |
| 53-21A | Frame Crossmember With Exhaust Pipe Holes | 63 | 1 | \$ 369.00 |
| 53-21B | Frame Crossmember With Exhaust Pipe Holes | 64-6 | 1 | 369.00 |
| 53-21C | Frame Crossmember With Exhaust Pipe Holes | 67 | 1 | 369.00 |
| 53-22A | #1 Body Mount Bracket On Frame Lh | 63 | 1 | \$ 45.00 |
| 53-22B | #1 Body Mount Bracket On Frame Rh | 63 | 1 | 45.00 |
| 53-22C | #1 Body Mount Bracket On Frame Lh | 64-7 | 1 | 45.00 |
| 53-22D | #1 Body Mount Bracket On Frame Rh | 64-7 | 1 | 45.00 |
| 53-23A | Body Mount #1 Bracket (riveted To Cowl) | 63-7 | 2 | 20.00 EACH |
| 53-23B | Body Mount #1 Reinforcement (with Rivets) | 63-7 | 2 | 8.50 EACH |
| 53-24A | Front Frame Horn- Inside Lh | 63-7 | 1 | 48.00 |
| 53-24B | Front Frame Horn- Inside Rh | 63-7 | 1 | 48.00 |
| 53-24C | Front Frame Horn- Outside Lh (11"long) | 63-7 | 1 | 48.00 |
| 53-24D | Front Frame Horn- Outside Rh (11"long) | 63-7 | 1 | 48.00 |
| 53-25 | Front Crossmember Lower Repair Plate | 63-7 | 1 | 136.00 |
| 53-26 | Brackets For Rear Transmission Mount (pr) | 63-7 | 1 PR | 20.00 PAIR |
| 53-27 | Underbody Reinforcement Near Fuel Tank (exc N03) | 64-7 | 1 | 12.00 |