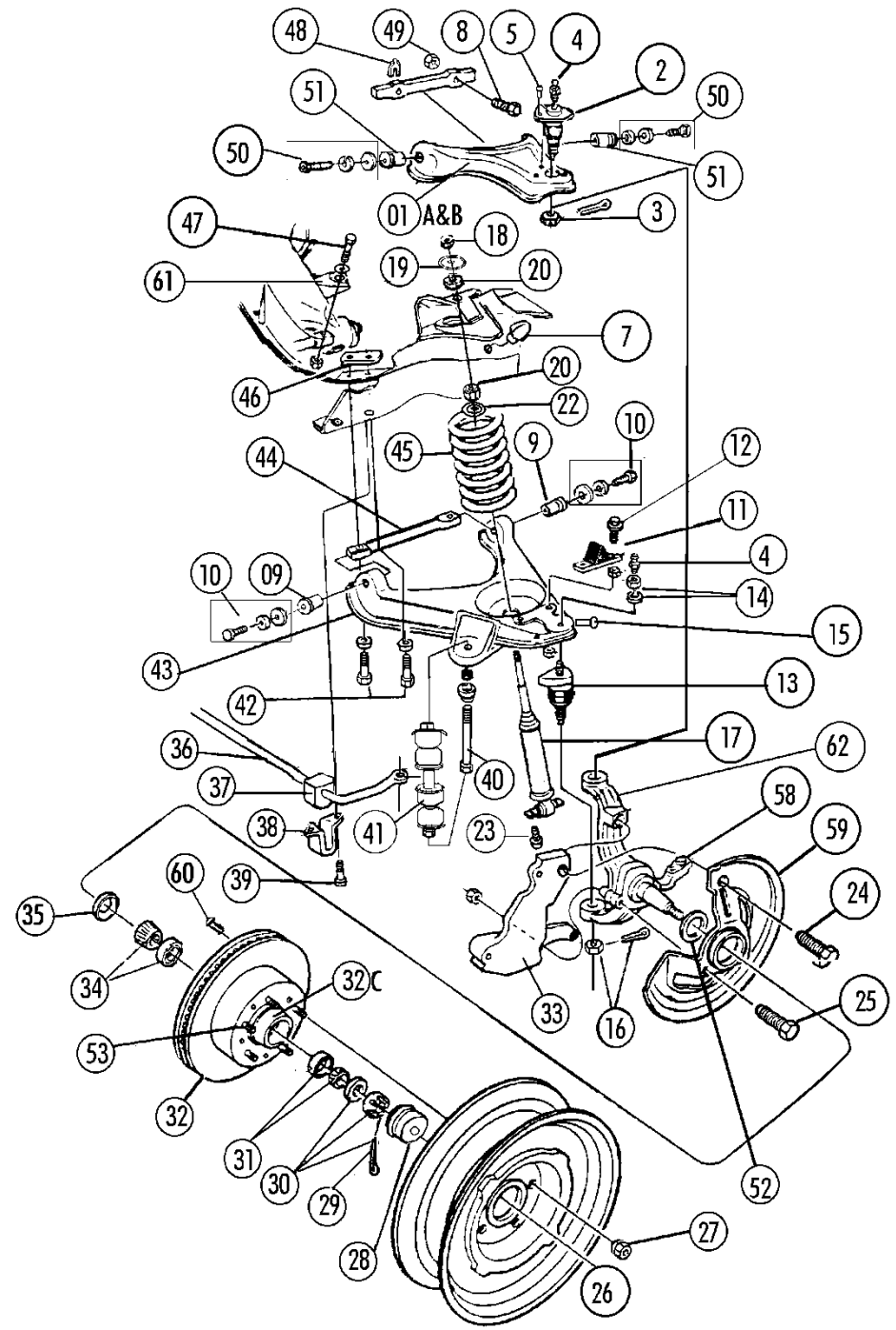


Section #49 Front Suspension: A-Arms, Ball Joints, Stabilizer, Shocks, Bushing, Hardware, Coil Springs

Sec-Part#	Name	Year	#NEED/Car	Price	Inc
49-01A	Upper A-arm With Riveted Correct Ball Joint Lh	63-7	1	200.00	
49-01B	Upper A-arm With Riveted Correct Ball Joint Rh	63-7	1	200.00	
49-02A	Upper Ball Joint (good Replacement)(rivetable)	63-7	2	30.00	EACH
49-02B	Upper Ball Joint (correct Reproduction)	63-7	2	85.00	EACH
49-03	Ball Joint Nut And Cotter Pin (2+2)	63-7	1 SET	1.00	SET
49-03B	Rubber Boot For Upper Ball Joint (repl=no#)	63-7	2	8.00	EACH
49-04A	Grease Fitting- 90 Degree (4 Pc)	63	1 SET	5.00	SET
49-04B	Grease Fittings- Straight (4 Pc)	64-7	1 SET	3.00	SET
49-99▶	Ball Joint Riveting Service (old Ball Joints Must Be Removed& A-arms Cleaned)		4	25.00	EACH
49-05A	Rivet For Original Upper Ball Joint (1/4") (6 Pc)	63-7	1 SET	1.50	SET
49-05B	Rivet For Replacement Upper Ball Joint(5/16") (6)	63-7	1 SET	1.50	SET
49-06A	Upper Control Arm Shaft (square)(no Bushings)	63-6E	2	39.00	EACH
49-06B	Upper Control Arm Shaft (round)(no Bushings)	66L-7	2	39.00	EACH
49-07	Bumper- Upper Control Arm	63-7	2	5.00	EACH
49-08	Camber Adjusting Bolts (4 Pc) (tr)	63-7	1 SET	12.00	SET
49-09	A-arm Lower Bushing (1)	63-7	4	6.00	EACH
49-10	Lower Bushing Retainer, Bolt, Lw (4 Ea)	63-7	1 SET	11.00	SET
49-11	Bumper- Lower A-arm	63-7	2	9.00	EACH
49-11B	Bumper Spacers & Bolts (66/427/ac Only)	66	1 SET	24.00	SET
49-12	Bumper Bolts And Nuts (4 Ea) (anchor Hdmdk)	63-7	1 SET	5.00	SET
49-13A	Lower Ball Joint (good Replacement)(rivetable)	63-7	2	40.00	EACH
49-13B	Lower Ball Joint (correct Reproduction)	63-7	2	85.00	EACH
49-14	Nut And Lw (ball Joint/grease Fitting)(pr)	63-7	1 PR	1.00	PAIR
49-15	Lower Ball Joint Rivets (4 Pc)	63-7	1 SET	2.00	SET
49-16	Lower Ball Joint Nut And Cotter Pin (pr)	63-7	1 PR	1.50	PAIR
49-17A	Front Shock Absorber (standard)use 49-17ag	63-7	2	N/A	
49-17AG	Front Shock(standard Gas Shock)(delco Replacment	63-7	2	45.00	EACH
49-17B	Front Shock Abs (heavy Duty)(f40,f41)use 49-17ag	63-7	2	N/A	
49-18	Nut- Shock Upper (pr)	63-7	1 PR	0.50	PAIR
49-19A3	Upper Retainer- Shock Upper (pr)	63	1 PR	4.00	PAIR
49-19A4	Upper Retainer- Shock Upper (pr)	64	1 PR	4.00	PAIR
49-19B	Upper Retainer- Shock Upper (pr)	65-7	1 PR	6.00	PAIR
49-20A	Grommet- Front Shock Top (lower)(pr)	63-7	1 PR	5.00	PAIR
49-20B	Grommet- Front Shock Top (small Upper)(pr)	63-4	1 PR	5.00	PAIR
49-20C	Grommet- Front Shock (large Upper)(pr)	65-7	1 PR	8.00	PAIR
49-22A	Lower Retainer- Shock Upper (pr)	63	1 PR	4.00	PAIR
49-22B	Lower Retainer- Shock Upper (pr)	64-7	1 PR	4.00	PAIR
49-23	Bolt- Lower Shock (4 Pc) (e Hdmdk)	63-7	1 SET	3.00	SET
49-24A	Front Brake Pivot Stud (see 52-47a)				
49-24B	Upper Bolt- Front Dust Shield (pr)	65-7	1 PR	15.00	PAIR
49-25A	Spindle Bolt And Nut Set (4 Ea)	63-4	1 SET	5.00	SET
49-25B	Spindle Bolt And Nut Set (4 Ea)	65-7	1 SET	5.00	SET
49-25C	Front Spindle Bolts With J56 Brakes See 52-46b)	65-6			
49-26	Wheels (see Sect 46)				
49-27	Lug Nuts (see Sect 46-06)				
49-28	Front Wheel Dust Cap (with Raised Bump)	63-7	2	12.00	EACH
49-29	Front Spindle Nut And Cotter Pin (2 Ea)*see49-30	63-7	1 PR	9.00	PAIR
49-30	Front Spindle Washer,nut,cotter Pin Set (2 Ea)	63-7	1	14.00	SET
49-31	Outer Bearing Assembly	63-7	2	15.00	EACH
49-31B▶	Front Wheel Bearing/seal Kit (1 Ea 31,34,35)	63-68	2 SET	39.00	SET
49-32A	Front Brake Rotor And Hub	65-7	2	N/A	
49-32B	Front Brake Rotor Only	65-7	2	75.00	EACH
49-32C	Front Hub (used)(with Bearing Set)	63-7	2	N/A	
49-33A	Caliper Bracket (lh)(with Part #	66L-7	1	50.00	
49-33B	Caliper Bracket (rh)(with Part #)	66L-7	1	50.00	
49-33C	Caliper Bracket (lh)(no Part #)	65-6E	1	50.00	
49-33D	Caliper Bracket (rh)(no Part #)	65-6E	1	50.00	
49-34	Inner Bearing Assembly	63-7	2	21.00	EACH
49-35	Seal Asm-for Inner Bearing	63-7	2	6.50	EACH
49-36A	Stabilizer Bar (standard 327) (3/4"dia) (used)	63-7	1	125.00	used
49-36B	Stabilizer Bar (standard 396/427) (7/8"dia) (used)	65-7	1	125.00	USED
49-36C	Stabilizer Bar (F40/F41-327/396/427) (15/16"dia)	63-7	1	185.00	NEW
49-37A	Stabilizer Bushing (standard) (3/4"bar)	63-7	2	5.50	EACH
49-37B	Stabilizer Bushing (Heavy Duty) (7/8-15/16"bar)	63-7	2	5.50	EACH
49-38	Bracket- For Stabilizer Bar	63-7	2	7.50	EACH
49-39	Bolt & Nut-for Stabilizer Bracket (anchor)(4 Ea)	63-7	1 SET	5.00	SET



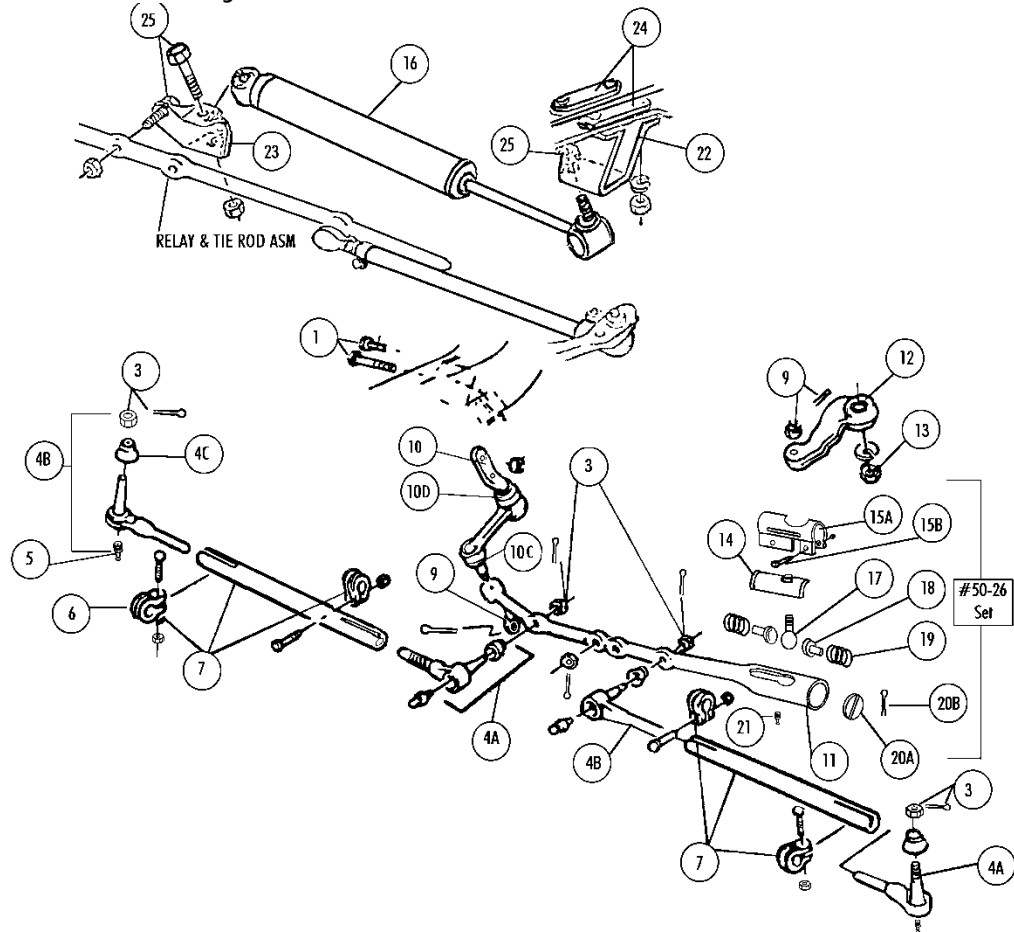
Section #49 Front Suspension: (continued) A-Arms, Ball Joints, Stabilizer, Shocks, Bushing, Hardware, Coil Springs

Sec- Part#	Name	Year	#NEED/Car	Price	Inc
49-40	Bolts For Stabilizer Link (WB2C)(pr)	63-7	1 PR	\$ 12.00	PAIR
49-41A	Stabilizer Links(wb2c Bolts & Correct Retainers)	63	1 SET	22.00	SET
49-41B	Stabilizer Links (wb2c & Correct Retainers)(set)	64-7	1 SET	32.00	SET
49-42	Bolts & Lws- Lower A Shaft To Frame (4 Ea)	63-7	1 SET	6.00	SET
49-43A	Lower A-arm With Riveted Correct Ball Joint (lh)	64-7	1	270.00	
49-43A3	Lower A-arm With Riveted Correct Ball Joint (lh)	63	1	270.00	
49-43B	Lower A-arm With Riveted Correct Ball Joint (rh)	64-7	1	270.00	
49-43B3	Lower A Arm With Riveted Correct Ball Joint (rh)	63	1	270.00	
49-44	Lower A-arm Shaft (no Bushings)	63-7	2	49.00	EACH
▶ Made in USA – to original Blueprints All Springs "sit" At Same Height When Installed (correct dia wire/load)					
49-45A	Front Coil Springs (63 Std Susp)(pr)	63	1 PR	155.00	PAIR
49-45B	Front Coil Springs (327 Std Susp)(pr)	64-7	1 PR	155.00	PAIR
49-45C	Front Coil Springs (396/427 Std Susp)(pr)	65-7	1 PR	155.00	PAIR
49-45D	Front Coil Springs (427 A/C Std Susp)(pr)	66-7	1 PR	155.00	PAIR
49-45E	Front Coil Springs (F40, F41, Z06, L88)(pr)	63-7	1 PR	155.00	PAIR
49-46	Nut Plate- Lower A-arm Shaft	63-7	2	11.00	EACH
49-47	Lower Arm Shaft Bolt, Special Washer, Nut (2 Ea)	63-7	1 SET	10.00	SET
49-48	A-Arm Shim Kit (both Sides)	63-7	1 SET	25.00	SET

Sec- Part#	Name	Year	#NEED/Car	Price	Inc
49-49A	A-Arm Alignment Nuts & Lw (4 Pr)	63-5	1 SET	\$ 3.00	SET
49-49B	A-Arm Alignment Nuts (4 Pc)	66-7	1 SET	2.00	SET
49-50	Upper Bushing Retainer, Bolt, Lw (4 Ea)	63-7	1 SET	11.00	SET
49-51	Upper A-Arm Bushing With Inner Rubber Ring	63-7	4	10.00	EACH
49-51B	Upper A-Arm Bushings With Inner Rubber Ring (4)	63-7	1 SET	40.00	SET
49-52	Gasket- Steering Knuckle (pr)	63-7	1 PR	4.50	PAIR
49-53A	Wheel Stud (front & Rear)	63-4	20	1.75	EACH
49-53B	Wheel Stud (front & Rear)	65-7	20	1.75	EACH
49-58	Plug-rear Hole-steering Knuckle Arm-p/s Only(pr)	63-7	1 PR	10.00	PR
(zinc Dichromate Finish=gold Color -correct 63-67 style /shape with number)					
49-59C	Front Disc Splash Shield (lh) Correct Shape & #	65-7	1	\$ 90.00	
49-59D	Front Disc Splash Shield (rh) Correct Shape & #	65-7	1	90.00	
49-60	Rivets- Front Rotor To Hub (10 Pc)	65-7	1 SET	5.00	SET
49-61	Lower A-arm Support With Gusset (Ihorrh Weld On)	63-7	2	79.00	EACH
49-62	Front Spindle (used)(63-4 Or 65-7)	63-7	2		CALL
49-99▶	Ball Joint Riveting Service (old Ball Joints Must Be Removed & A-Arms Clean -Ship them to us and we will install ball joints +\$ of balljoint(Allow 1 week)	63-7	4	25.00	EACH

Section #50 Steering Linkage: Idler Arm, Tie Rod, Pitman Arm, Relay Rod

Sec- Part#	Name	Year	#NEED/Car	Price	Inc
50-01	Idler Arm Bolts And Nuts (2 Ea)	63-7	1 SET	\$ 5.00	SET
50-03	Tie Rod End Nut And Cp (4 Ea)	63-7	1 SET	3.00	SET
50-04A	Tie Rod End Asm (lh Thread) (USA)	63-7	2	21.00	EACH
50-04B	Tie Rod End Asm (rh Thread) (USA)	63-7	2	21.00	EACH
50-04C	Tie Rod End Boot (correct) (1)	63-7	4	8.00	EACH
50-05	Tie Rod End Grease Fittings (4 Pc)	63-7	1 SET	3.00	SET
50-06	Tie Rod Clamp, Bolt(rsc), Nut (correct W Rib)	63-7	4	5.75	EACH
50-07	Tie Rod Sleeve With Clamps & Bolts(rsc)	63-7	2	33.00	EACH
50-09	Nuts And Cp- Pitman & Idler Arm (2 Ea)	63-7	1 PR	2.50	PAIR
50-10A	Idler Arm(no P/s)(correct With #, No Zerks)	63-7		45.00	
50-10B	Idler Arm (p/s)correct With No Zerks)(use 50-10a	63-7		N/A	
50-10C	Idler Arm Plastic & Rubber Bushings (1 Pr)	63-7	1 PR	4.00	PAIR
50-10D	Idler Arm Boot	63-7	1	9.00	
50-11A	Steering Relay Rod(327/396/427-no P/s)-rebuilt** Need Core First >> No Exceptions.	63-7	1	\$ 250.00	EXCH
50-11B	Steering Relay Rod (396/427) (Replacement)	65-7	1	\$ 450.00	
50-11C	Steering Relay Rod (power Steering)	63-7	1	150.00	
50-12A	Pittman Arm (regular,non Ps)	63-7	1	75.00	EACH
50-12B	Pittman Arm (p/s)	63-7	1	50.00	
50-13	Pittman Arm Nut And Lw	63-7	1	12.50	
50-26▶	Drag Link Rebuilding Kit (50-14,15A,15B,17,18,19,20,21)	63-7	1 KIT	79.00	KIT
50-14	Relay Rod Seal (non P/s)	63-7	1	21.00	
50-15A	Clamp For Relay Rod Seal (non P/s)	63-7	1	12.00	
50-15B	Bolts & Nuts For Relay Rod Clamp (2 Ea)	63-7	1 SET	2.00	SET
50-16	Steering Stabilizer Shock(327-except 63-5 Hiper) (repro, USA)	63-7	1	130.00	
50-17	Ball Stud- Non P/s Relay Rod	63-7	1	25.00	
50-18	Seat- Non P/S Relay Rod (pr)	63-7	1 PR	18.00	PAIR
50-19	Springs- Non P/s Relay Rod (pr)	63-7	1 PR	10.00	PAIR
50-20A	Plug- Non P/S Relay Rod	63-7	1	7.50	
50-20B	Cotter Pin For Plug- Non P/S Relay Rod	63-7	1	0.25	
50-21	Grease Fitting- Non P/S Relay Rod	63-7	1	0.75	
50-22	Stabilizer Piston Bracket On Frame	63-7	1	25.00	
50-23	Stabilizer Piston Bracket On Relay Rod	63-7	1	25.00	
50-24	Bolt Plate (2), Nut(4) & Washer(4) Set	63-7	1 SET	8.00	SET
50-25	Stabilizer Shock Bolt & Lock Nut Set	63-7	1 SET	3.00	SET
50-26▶	Drag Link Rebuilding Kit (50-14,15,17-21)	63-7	1 KIT	79.00	KIT



See section 18 for Steering Column Parts, Steering Couplers.