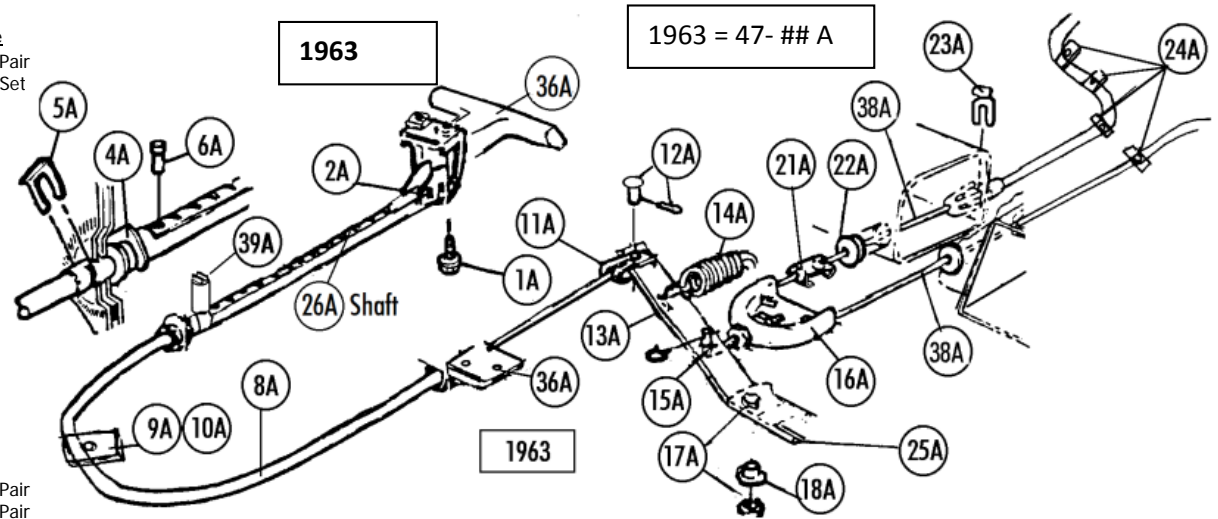


Section 47 Parking Brake Hardware, Cables ...

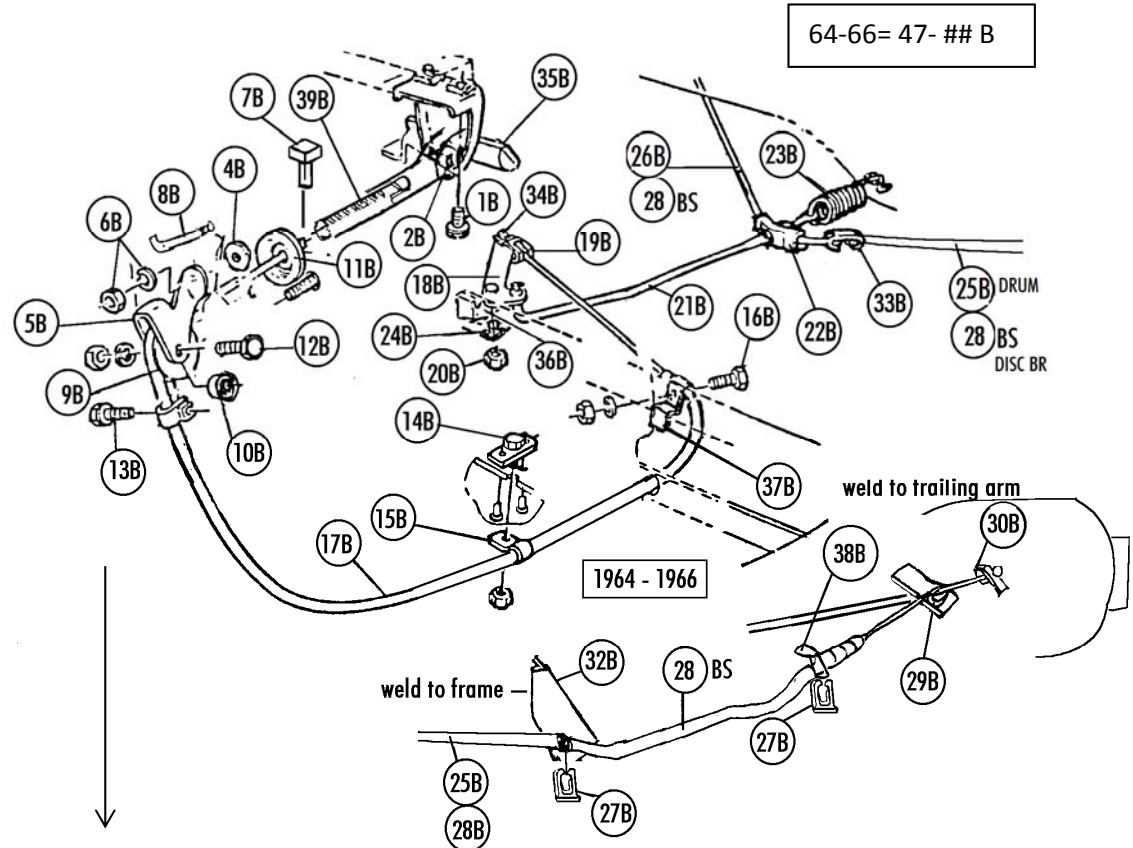
Sec-Part	Name	1963	Year	#need/car	Price
47-01A	Parking Brake Handle Mounting Bolts (1 Pr)	63	1 PR	1.50	Pair
47-02A	Handle Spring & Pawl Set	63	1 SET	12.00	Set
47-04A	Cable Retainer Clip (inside firewall)	63	1	3.50	
47-05A	Cable Retainer Clip (outside firewall)	63	1	4.00	
47-06A	Handle Stop Pin	63	1	5.00	
47-08A	Parking Brake Front Cable (O.E.M.) USA	63	1	95.00	
47-09A	Cable Clamp	63	1	2.00	
47-10A	Nut (for cable clamp)	63	1	0.25	
47-11A	Clevis & Clevis Pin (12A)	63	1	7.00	
47-12A	Clevis Pin & Cotter Pin (1 + 1)	63	1	1.00	
47-13A	Parking Brake Lever	63	1	20.00	
47-14A	Parking Brake Lever Spring	63	1	5.00	
47-15A	J-bolt, Nuts & Clip	63	1	14.00	
47-16A	Equalizer, rear park brake cable	63	1	20.00	
47-17A	Bolt, Washer & Special Nut (for Lever Bracket)	63	1	1.00	
47-18A	Lever Bushing	63	1	4.00	
47-19A	Rear Cable LH (Metal Casing)	63	1	42.00	
47-20A	Rear Cable RH (Metal Casing)	63	1	55.00	
47-21A	Cable Retainer	63	1	8.75	
47-22A	Cable Grommets (replacement)(pair)	63	1 PR	2.00	Pair
47-23A	Parking Brake Retainer Clips (2)	63	1 PR	8.00	Pair
47-24A	Cable Clamps & Screws (4 Ea)	63	1 SET	24.00	Set
47-25A	P/B Lever Bracket (Weld To Frame)	63	1	15.00	
47-26A	1963 Parking Brake Notched Shaft	63	1	45.00	
47-36A	Front Cable Clamp, Reinforcement, Bolt, Rivets	63	1 SET	20.00	Set
47-37A	Parking Brake Chrome Handle	63	1	45.00	
47-38A	Rear Cables (Metal Casing)(pair) (=19A/20A)(drum brk)	63	1 PR	97.00	Pair
47-39A	X Parking Brake Warning Switch & Bracket X N/A	63	1	N/A	



See section 52 for 63-64 drum/park brake shoes, hardware ...

Section 47 64-66 Parking Brake Hardware, Cables ...

Sec-Part	Name	Year	#need/car	Price	
47-01B	Parking Brake Handle Mounting Bolts (pr)	64-6	1 PR	1.50	Pair
47-02B	Handle Spring & Pawl Set	64-6	1	12.00	
47-04B	Pulley Bracket Washers (2 Pc)	64-6	1 PR	0.50	Pair
47-05B	Pulley Bracket	64-6	1	21.00	
47-06B	Bracket Nuts & Washers (2 Ea)	64-6	1 SET	0.50	Set
47-07B	Stop Pin for park brake handle	64-6	1	5.50	
47-08B	Parking Brake Warning Switch	64-6	1	9.00	
47-09B	Nylon Pulley	64-6	1	15.00	
47-10B	Bearing For Park Brake Pulley	64-6	1	3.75	
47-11B	Parking Brake Grommet (after 4/65)(replacement)	65-6	1	1.00	
47-12B	Bolt, Nut, Washer For Park Brake Pulley	64-6	1	1.00	
47-13B	Cable Clamp Bolt	64-6	1	1.75	
47-14B	Cable T Bolt, Rivets & Nut	64-6	1	6.00	
47-15B	Cable Clamp	64-6	1	1.00	
47-16B	Cable Clamp Bolt, Nut & Lw	64-6	1	1.00	
47-17B	Parking Brake Front Cable- (correct size ends)	64-6	1	49.00	
47-18B	Parking Brake Lever	64-6E	1	18.00	
47-18BL	Park Brake Lever 66 Late (april 66 >) 2nd Design (must Modity Emerg Brake Bracket)(w Directions)	66L	1	23.00	
47-19B	Clevis + Clevis Pin & Cotter Pin (34b)	64-6	1	7.00	
47-20B	Lever Bolt & Special Nut	64-6	1	1.00	
47-21B	Parking Brake ROD, Clip & Nuts	64-6	1	40.00	
47-22B	Equalizer (for park brake cable)	64-6	1	6.50	
47-23B	Parking Brake Equalizer SPRING	64-6	1	5.00	
47-24B	Lever Bushing	64-6	1	4.00	
47-25B	Parking Brake Cable LH (64-5 Drum Brakes)(OEM)	64-5	1	45.00	
47-26B	Parking Brake Cable RH(64-5 Drum Brakes)(OEM)	64-5	1	45.00	
47-27B	Cable Retainer Clips (4)	64-6	1 SET	16.00	Set
47-28BS	Rear Cable (Disk Brakes) s.s. casing with boots	65-6	1	55.00	
47-29B	Cable Nylon Guides (pr)	65-6	1 PR	4.00	Pair
47-30B	Cable Brackets On Trailing Arm (pr)	65-6	1 PR	19.00	Pair
47-32B	Cable Brackets On Frame (weld On)(pr)	64-6	1 PR	25.00	Pair
47-33B	Cable Retainer (drum brakes)	64-5	1	8.00	



Section 47 64-66 Parking Brake Hardware, Cables ...

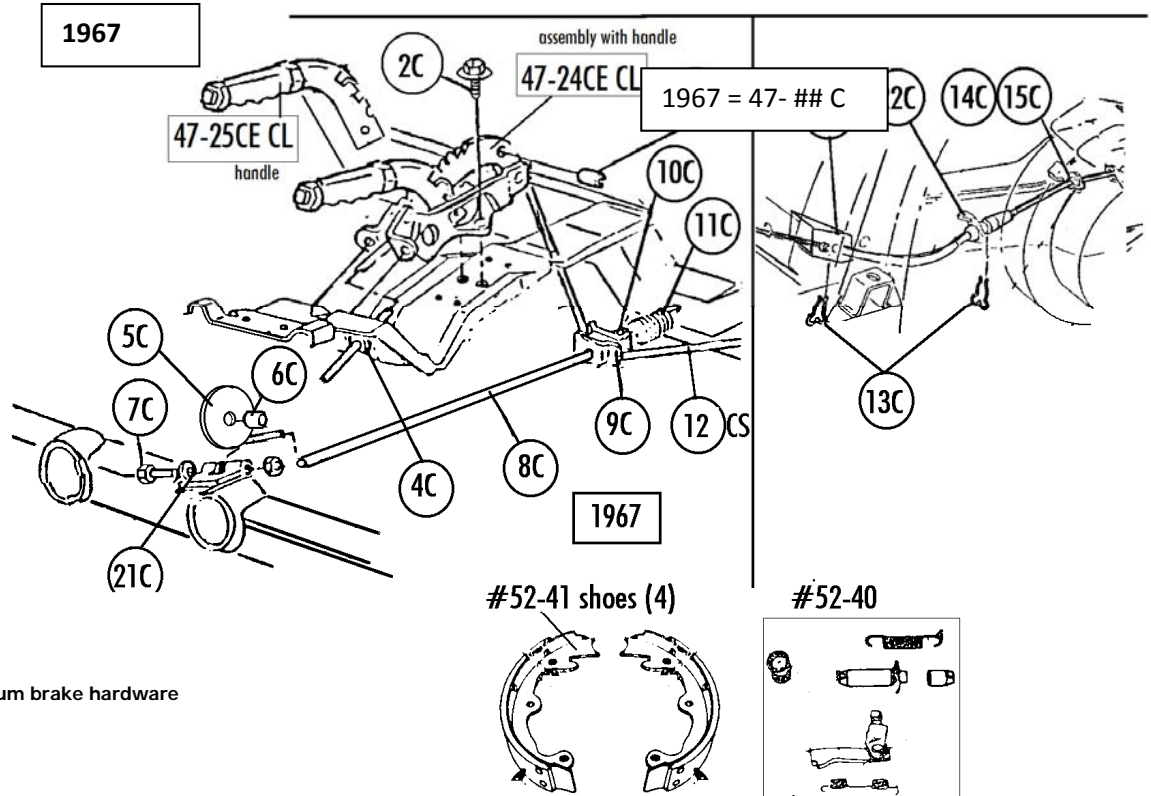
Sec-Part	Name	Year	#need/car	Price
47-34B	Clevis Pin & Cotter Pin	64-6	1	\$ 1.00
47-35B	Parking Brake Chrome Handle	64-6	1	45.00
47-36B	Park Brake Pivot Bracket (weld To frame)	64-6	1	15.00
47-37B	P/B Cable Clamp (weld To Frame)	64-6	1	7.50
47-38B	P/B Cable Front Bracket On Trailing Arm (weld)	65-6	1 PR	12.50 Pair
47-39B	Parking Brake Notched Shaft For Handle	64-6	1	49.00
47-40B	Pin For Parking Brake Handle	64-7	1	2.50
47-41B	P/B Rear Cable Boot (pr) (with Ribs)	65-6	1 PR	20.00 Pair



64-66 continued from above

Section 47 1967 Parking Brake Hardware, Cables ...

Sec-Part	Name	Year	#need/car	Price
47-02C	Parking Brake Handle Mounting Bolts (4)	67	1 SET	3.00 Set
47-03C	Retainer Pin For Parking Brake Cable	67	1	2.00
47-04C	Grommet For Parking Brake Cable	67	1	4.50 Each
47-05C	White Nylon Pulley For Parking Brake	67	1	10.00
47-06C	Parking Brake Pulley Bearing	67	1	3.00
47-07C	Pulley Bolt, Washer, Nut	67	1	2.00
47-08C	Front Parking Brake Cable 1967	67	1	24.00
47-09C	Equalizer (for park brake cable)	67	1	6.50
47-10C	Cable Nuts (pr)	67	1 PR	0.50 Pair
47-11C	Parking Brake Spring	67	1	5.00
47-12CS	Rear Park Brake Cable (s.s. casing With Boots)	67	1	55.00
47-13C	Cable Mickey Mouse Clips (4 Pc)	67	1 SET	4.00 Set
47-14C	Cable Nylon Guides (pr)	67	1 PR	4.00 Pair
47-15C	Cable Brackets On Trailing Arm (pr)	67	1 PR	19.00 Pair
47-17C	Cable Brackets On Frame (weld On)(pr)	67	1 PR	25.00 Pair
47-18C	Parking Brake Shoes & hdware (see Sect 52	65-7		
47-20C	Parking Brake Switch & Mounting Bolt	67	1	19.00
47-21C	Pulley Bracket (weld To Frame)	67	1	25.00
47-22C	P/B Cable Front Bracket On Trailing Arm (weld)	67	1 PR	12.50 Pair
47-23C	P/B Rear Cable Boot (pr) (with Ribs)	67	1 PR	10.00 Pair
47-24CE	Park brake lever ASSEMBLY -black grip	67	1	160.00
47-24CL	Park Brake lever ASSEMBLY ,chrome end/stripe	67L	1	160.00
47-25CE	Brake HANDLE with correct /all black grip	67E	1	100.00
47-25CL	Brake HANDLE -67Late with chrome end/stripe (black Handle Until #6000 Then Chrome End)	67L	1	100.00



Also See Section 15 For 67 Brake Console and hardware.

65-67 park brake shoes & hardware -----see section 52 for more brake and for 63-64 drum brake hardware

52-40	Parking Brake HARDWARE Kit S.S. (2 Whl Set)	65-7	1 SET	\$60.00 Set
52-41	Parking Brake SHOE set (4 Pc) (s.s.)	65-7	1 SET	85.00 Set
52-41B	Park Brake Shoe Set >steel< (4)	65-7	1	49.00 set

(these are 'car' set)