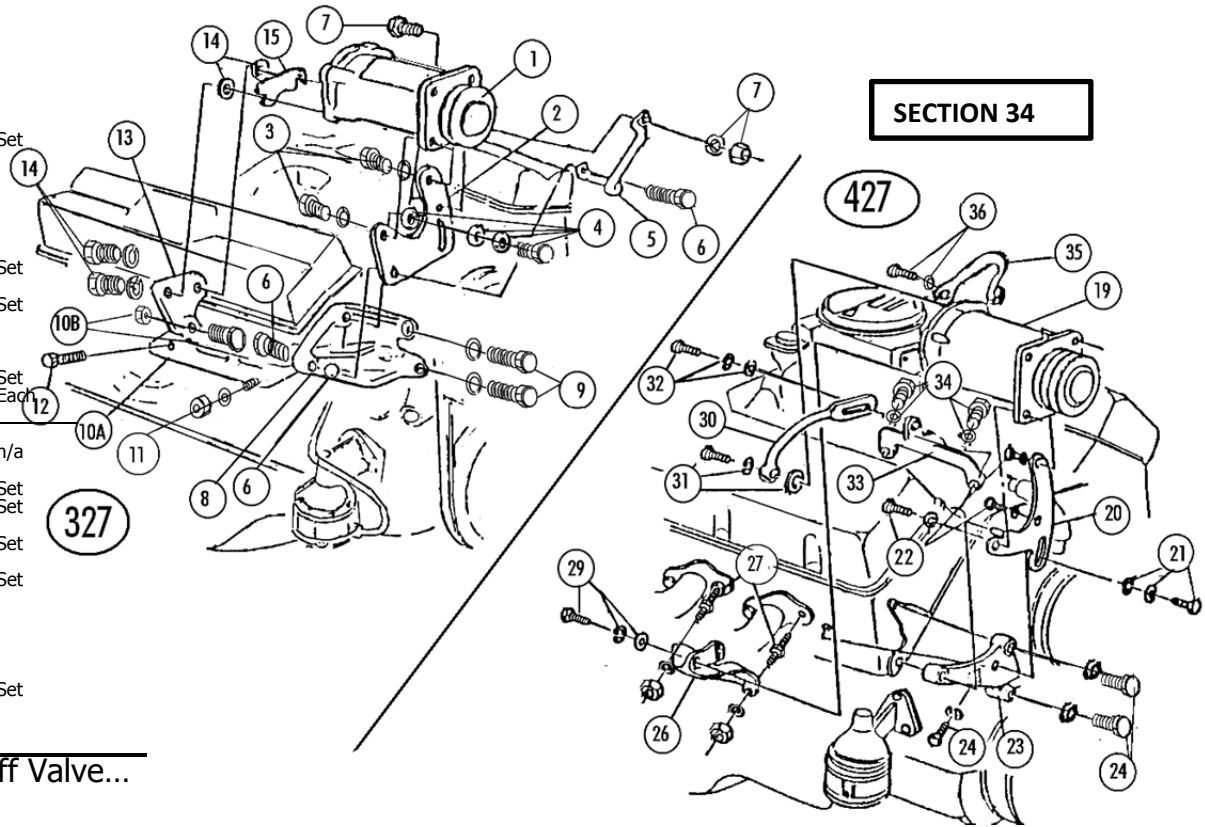


### Section #34 Air Cond Compressor Brackets 327 & 427

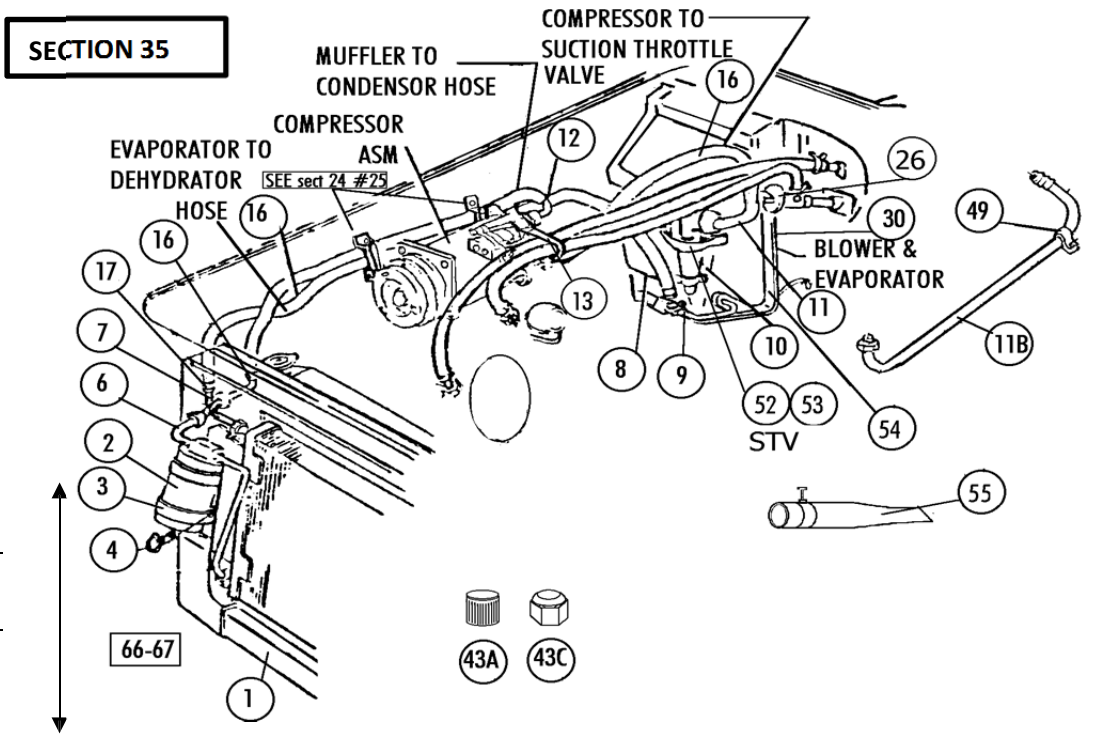
Sect-Part	Name	Year	#need/CAR	Price
34-01B	A/C Compressor Pulley only (64-65 327/365hp)last one	64-5	1	\$ 250.00
34-02	<b>Compressor Front Brace (327)</b>	64-7	1	45.00
34-03	Compressor Bolt (2)	64-7	1 SET	6.00
34-04	Compressor Brace Bolt(TR), Washer & Lw (327)	64-7	1	1.50
34-05A	Hose Bracket On Compressor (327)	63	1	14.00
34-05B	Hose Bracket On Compressor (327)	64-7	1	24.00
34-06	Hose Bracket Bolt(tr) & Locknut	64-7	1	3.00
34-07	Hose Bracket Bolt, Lw & Locknut	64-7	1	1.00
34-08	Compressor Front Bracket (327)	64-7	1	50.00
34-09	Front Compressor Bracket Bolts & Lw (tr)(2 Ea)	64-7	1 SET	6.00
34-10A	Lower Compressor Support Bracket (327)	64-7	1	50.00
34-10B	<b>Compressor Rear Bkt Bolt &amp; Locknut Set</b>	63-7	1 SET	2.00
34-11	Compressor Lower Bracket Stud, Lw, Nut	64-7	1	11.00
34-12	Compressor Lower Bracket Bolt	64-7	1	6.00
34-13	Compressor Rear Bracket (327)	64-7	1	19.00
34-14	Compressor Rear Bkt Bolts, Lw, & Washers (2 Ea)	64-7	1 SET	3.00
34-15	Compressor Rear Shim (each)	64-7	1-4	4.00
34-17,18	Intake A/C Vacuum Fitting (see Sect 21-27) Vacuum Hose A/C (see 35-51)			

Sect-Part	Name	Year	#need/CAR	Price
34-19	<b>427 Air Cond Brackets</b>			
34-20	A/C Compressor & Clutch	66-7	1	n/a
34-21	<b>Compressor Front Brace (427)</b>	66-7	1	42.00
34-22	Compressor Brace Pivot Bolt, Lw, Fw (427)	66-7	1	1.50
34-23	Compressor Front Bracket Bolt (3) (427)	66-7	1 SET	9.00
34-24	Compressor Front Bracket (427)	66-7	1	95.00
34-25	Compressor Front Bracket Bolts & Lw (3 Ea)	66-7	1 SET	3.50
34-26	<b>Compressor Rear Bracket (427)</b>	66-7	1	89.00
34-27	Compressor Bracket Stud, Nut & Lw (2 Ea)	66-7	1 SET	11.00
34-29	Compressor Rear Bracket Bolt, Lw, Fw	66-7	1	1.75
34-30	Compressor Rear Brace Rod (427)	66-7	1	40.00
34-31	Compressor Brace Rod Bolt (WB), Lw & Spacer	66-7	1	4.25
34-32	Compressor Rod Adjusting Bolt(TR), Lw, Fw	66-7	1	2.00
34-33	Compressor Rod Bracket On Intake (427)	66-7	1	68.00
34-34	Intake Bracket Bolts & Lw (TR)(2 Ea)	66-7	1 SET	6.00
34-35	Hose Bracket On Compressor (427)	66-7	1	36.00
34-36	Hose Bracket Bolt & Lw	66-7	1	0.75



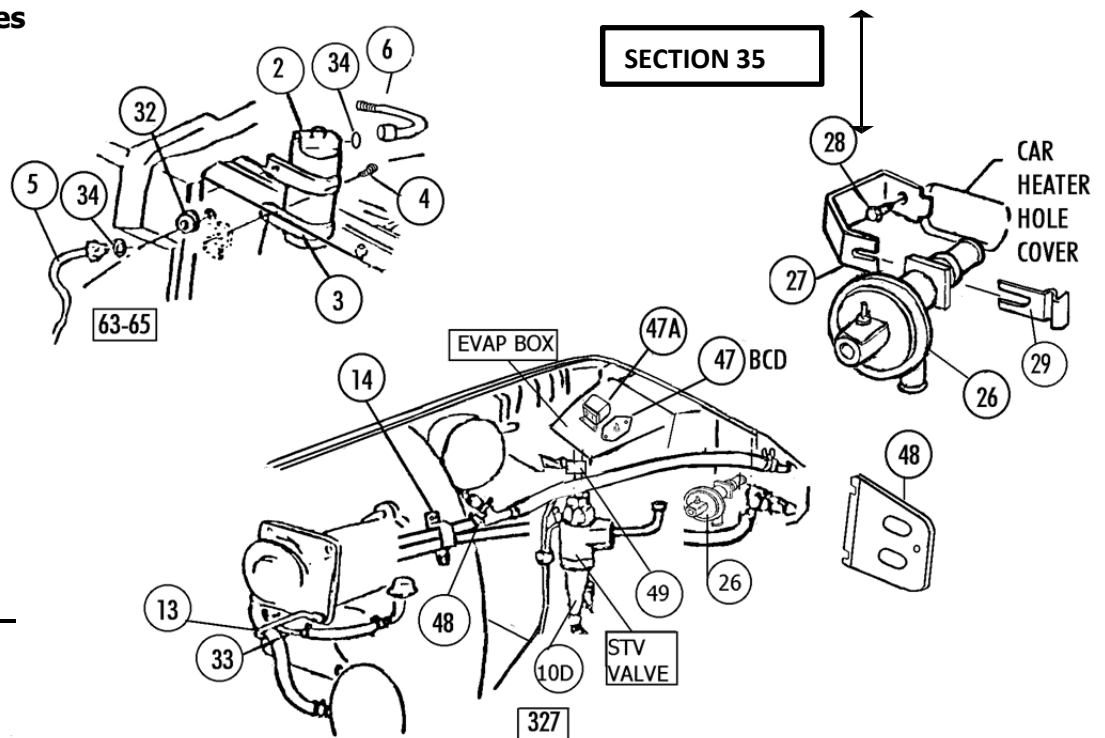
### Section #35 A/C Fittings, Driers, Evap Core, Hoses, Shutoff Valve...

Sect-Part	Name	Year	#need/CAR	Price
x35-01	x Air Cond Condensers -- no more --			
35-02	Receiver Drier (Delco Replacement)(tapered)	63-7	1	\$ 49.00
35-03	<b>Receiver Drier Brackets (pr)</b>	63-7	1 PR	15.00
35-04	Receiver Drier Bracket Bolts (pr)	63-7	1 PR	1.00
35-05	Tube & Fitting- Condenser To Receiver Drier	63-5	1	55.00
35-06A	Tube & Fitting- Receiver Drier To Hose	63-5	1	35.00
35-06B	Tube and Fitting- Receiver Drier To Hose	66-7	1	45.00
35-07A	<b>Fitting- Condenser To Hose</b>	63-5	1	45.00
35-07B	Fitting- Condenser To Hose-early(over Rad Suppt)	66E	1	45.00
35-07C	Fitting- Condenser To Hose Late (thru Rad Suppt)	66-7	1	45.00
35-08A	Fitting- Expansion Valve To Hose (90 Degree)	63-5	1	29.00
35-08B	Fitting- Expansion Valve To Hose (straight)	66-7	1	25.00
35-09A	Expansion Valve (good replacement)	63-7	1	60.00
35-09C	Plastic Tie & Screw For Exp Valve Tubes	63-7	1	3.00
35-10A	POA Valve,1967 <b>NOS! no warr/no rtns</b> 1 avail.	67	1	CK ONLINE
35-10B	<b>STV Diaphragm Kit</b> (diaphragm (no piston),s crews ..)	63-6	1	69.00
35-10C	STV Graphite Lubricant (6.5g)	63-6	1	4.50
35-10D	STV Eliminator Kit (spl Fitting Eliminates STV Valve)	63-6	1	155.00
35-10F	POA Eliminator Kit (replaces POA With Eliminator Valve)	67	1	99.00
35-11A	Fitting- STV Valve To Hose	63-6	1	45.00
35-11B	Fitting- POA Valve To Hose	67	1	45.00
35-12A	<b>Compressor Fitting &amp; Muffler (327)</b>	63-4E	1	130.00
35-12B	Compressor Fitting & Muffler (327)	66-7	1	130.00
35-12C	Compressor Fitting & Muffler (427)	66L-7	1	130.00
35-12D	Compressor Fitting BOLT,LW & Spacer	63-7	1	3.00
35-12E	Compressor Fitting & Muffler (327)	64L-5	1	145.00
35-12F	Compressor Muffler Fitting (427) (early/pre Jan)	66E	1	130.00
35-13	Rod Hose Clamp 327 (see Sect 34-05) and 427 34-35			
35-14,15	Fender Hose Clamp (see Sect 24-25 Heater Fitting (see Sect 24-12)			
35-16	<b>A/C Hose Set (3 Pc) (no logos)</b>	63-7	1 SET	\$ 60.00
35-16B	<b>A/C Hoses with Logos (3pc)</b>	63-7	1 SET	\$ 125.00
35-17	A/C Hose CLAMP Set (O.E.M.) (Ideal/Hex Hd Screw)	63-7	1 SET	12.00
35-26B	<b>Heater Shutoff Valve (Brass Correct Repro)</b>	63-7	1	\$ 120.00
35-27	Heater Shut-off Valve Bracket	63-7	1	12.50
35-28	Heater Valve Bracket Bolt	63-7	1	0.50
35-29	Heater Valve Clip	63-7	1	4.50
35-30A	<b>Evaporator Core</b>	63-5	1	\$ 310.00
35-30B	Evaporator Core	66	1	310.00
35-30C	Evaporator Core	67	1	310.00
35-30D	Screws & U-nuts For Evap Core (4+4)	63-7	1 SET	4.00



## Section 35 continued - A/C Fittings – blower , clamps, hoses

35-31	A/C Blower Motor (see 37-31b)	64-7	1		
35-32A	<b>Grommet</b> (A/C Fitting Through Support)	63-5	1	\$ 10.00	Each
35-32B	Grommet (A/C Fitting Through Support)	66-7	2	10.00	Each
35-33A	<b>Heater Hose Tube</b> (327-A/C)- Use 35-33b	63	1		N/A
35-33B	Heater Hose Tube (327-A/C)(thru 1/66)	64-6E	1	27.00	
35-34	Air Conditioning O-ring Set (12 Pc)	63-7	1 SET	7.00	Set
35-35	Horn Bracket With Rivets (A/C)(RH)	66-7	1	11.50	
35-43A	<b>Valve Caps (orig style-Aluminum)</b> A/C STV/PCV	63-7	1	10.00	
35-43B	Replacement A/C Fitting Caps	63-7	-	1.00	Each
35-43C	Fitting Cap (brass hex)for a/cMuffler(orig style	63-7	1-2	10.00	Each
35-44	<b>No Drip Insulation Black Tape</b> (12" pc)	63-7	1	3.50	
35-45A	A/C Wiring Harness (see Sect 43) see section 43				
35-46B	<b>Rubber Cooling Tube</b> , A/C Blower motor (replacem	63-7	1	15.00	
35-47A	<b>A/C Relay</b> (replacement)	63-7	1	21.00	
35-47B	<b>A/C Blower Motor Resistor</b>	63-7	1	32.00	
35-47C	A/C Blower Resistor Gasket	63-7	1	3.00	
35-47D	Screws For Blower Relay & Resistor (4)	63-7	1 SET	2.00	Set
35-47E	Plug- Heater Box Resistor	63-7	1	5.00	
35-48	<b>Heater Cover Plate (A/C)</b>	63-7	1	50.00	
35-49A	Clamp & Screw for 67 POA tube	67	1	1.00	
35-49B	Clamp & Bolt For Evap Tube To STV (on Evap Box)	63-6	1	3.50	
35-50A	Vacuum Line Plastic Tee (before May 64)	63-4E	1	2.50	
35-50B	Vacuum Line Plastic Tee (after April 64)	64L-6	1	2.50	
35-51A	<b>Air Conditioning Vacuum Hose Set</b> (before 5/5/64)	63-4E	1 SET	25.00	Set
35-51B	Air Conditioning Vacuum Hose Set(after 5/5/64)	64L-7	1 SET	25.00	Set
35-52	<b>STV Valve Bracket (with 2 Nuts &amp; 2 Screws)</b>	63-6	1	75.00	
35-52B	Screws & Nuts (2+2) For STV Bracket Mounting	63-6	1	2.00	
35-53A	<b>POA Valve BRACKET On Box</b>	67	1	25.00	
35-53B	<b>POA Valve BRACKET to valve</b>	67	1	25.00	
35-54	Screw Set For Metal A/C Box On Cowl (38 Pc)	63-7	1 SET	15.00	Set
35-55	<b>Drain Hose &amp; Clamp For Evaporator Box</b>	63-7	1	\$12.00	



## Section #36 Air Cond Ducts , A/C Heater Box Brackets, Bezels -

36-01	X Complete Inner A/C & Heater Box – NO MORE.	64-7	1	x	
36-02	A/C Heater Box Nuts (9 Pc)	63-7	1 SET	2.25	Set
36-03	<b>Center Lower A/C Plastic Distrib Duct &amp; Door</b>	63-7	1	135.00	
36-03C	Screws For Lower Duct Extension (#36-03)(8 Pc)	63-7	1 SET	6.00	Set
36-04	<b>RH A/C Duct with Flap, Knob &amp; Metal Ball</b>	63-7	1	280.00	
36-04R	RH A/C Duct (replacement- No Shut Off Flap)	63-7	1	160.00	
36-05	<b>Duct Screws &amp; Washers</b> (8 Pc)	63-7	1 SET	2.75	Set
36-06	RH Duct Clamp & Bolt	63-7	1	30.00	
36-07	Duct Clamp Bolt	63-7	1	0.75	
36-08B	<b>Center Y Duct</b> (plastic/replacement)	64-7	1	185.00	
36-09A	<b>LH A/C Duct with Flap, Knob &amp; Metal Ball</b>	63-6	1	320.00	
36-09B	LH A/C Duct with Flap, Knob & Metal Ball	67	1	320.00	
36-09AR	LH A/C Duct (replacement- No Shut Off Flap)	63-6	1	190.00	
36-09BR	Lh A/C Duct (replacement- No Shut Off Flap)	67	1	190.00	
36-10	<b>Chrome Knob</b> For Air Cond Duct	63-7	2	25.00	Each
36-11	<b>LH Bracket</b> For LH A/C Duct	63-7	1	20.00	
36-12A	RH Bracket For LH A/C Duct	63-6	1	35.00	
36-12B	RH Bracket For LH A/C Duct	67	1	30.00	
36-12C	RH Bracket On RH Air Cond Duct	63-7	1	15.00	
36-13	Bolt Plate, Nut & Rivets (1,1,2)	63-7	1 SET	6.00	Set
37-17B	A/C Oil Line Grommet (=37-17B)	63-7	1	6.00	
<b>36-17</b>	<b>Center Duct Housing</b>	63-7	1	185.00	
36-18	<b>Duct Bezel</b> , Center A/C Dash	63-7	1	125.00	
36-19	<b>Deflector</b> , Center A/C Dash Duct	63-7	1	99.00	
36-20	Clips (2) for Center A/C Dash Duct Deflector	63-7	1 PR	0.50	Pair
12-56C	RH Vent Grill (with A/C)	63-7	1	95.00	
36-24	Cable Bracket For RH Vent Cable With A/C	63-7	1	14.00	
36-25	Bolt Plate (for fresh air vent)	63-7	1	8.50	
<b>36-28</b>	<b>Complete A/C-heater Box Gasket Set</b> (25 Pc+32 R)	63-7	1	69.00	
36-28B	Air Cond Box Mounting Gasket Set (5 Pc Set)	63-7	1 SET	35.00	Set
36-29A	<b>Plenum Cover (black plastic)</b>	63-7	1	69.00	
36-29B	Plenum Cover Screws (12 Pc)	63-7	1 SET	9.00	Set
36-30	Air Cond <b>DUCT HOSE SET</b> (3 Pc) (correct)	63-7	1	35.00	
<b>36-31</b>	<b>Heater Vacuum Switch A/C</b> , Replacement Plstc/metal	63-7	1	75.00	
36-31B	Vacuum Switch Nuts & Lw (2+2)	63-7	1 SET	1.00	Set
36-32	<b>Electric Shutoff Switch</b> On A/C Heater Box	63-7	1	50.00	
36-32B	Screws For A/c Shutoff Switch (2)	63-7	1 PR	1.00	Pair
36-33	<b>A/C Duct Hose CLAMPS (2)</b>	63-7	1 PR	10.00	Pair
36-34	A/C Duct Ball Felt Seals (4 Pc For 2 Balls)	63-7	1 SET	5.00	Set
36-35	<b>A/C Heater Box Plastic Front Distribution Duct</b>	63-7	1	175.00	
36-35C	Screws For A/C Front Distrib Duct (#36-35)(14)	63-7	1 SET	7.50	Set
36-36	A/C Duct Ball Retainer Screws (4)	63-7	1 SET	2.00	Set
36-37	A/C Duct Chrome Plated Metal Ball & Felt	63-7	2	60.00	Each
36-37B	A/C Duct Plastic Ball (replacement)	63-7	2	20.00	Each
36-38A	<b>Duct Extension &amp; Screws</b> (LH)	63-6	1	40.00	
36-38B	Duct Extension & Screws (RH)	63-7	1	40.00	

## Section 36 Air Cond

