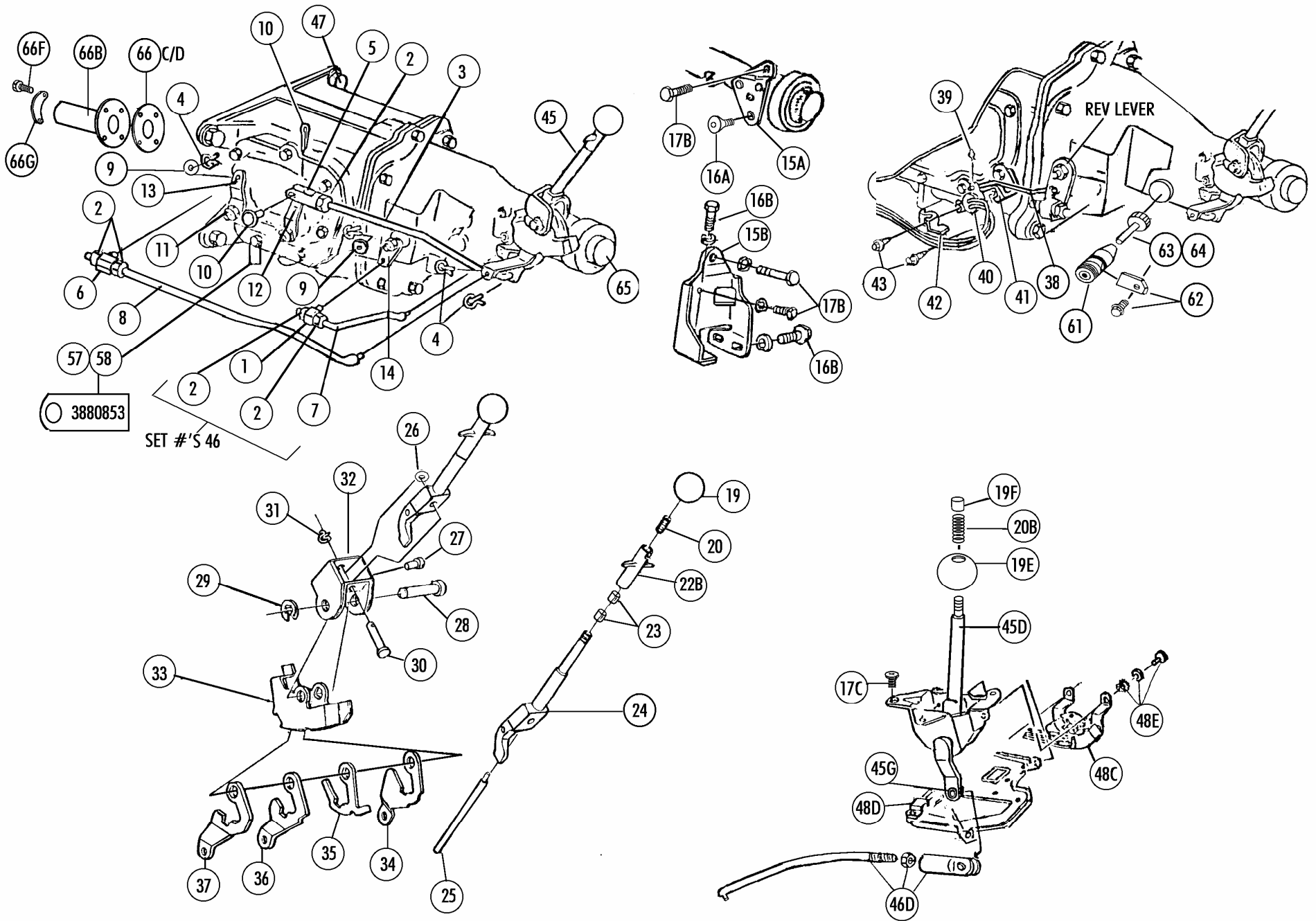


Section #32 Shifter And Linkage ● Bu Light Switch ● Speedo Gears



SEE PHOTOS ONLINE WWW.LICORVETTE.COM

Section #32 Shifter And Linkage ● Bu Light Switch ● Speedo Gears , Trans Kits, Seals & Tags

Sec-Part#	Name	Year	#/Car	Price	Inc
32-01	Shift Rod Long Swivel- Reverse	64-7	1	5.50	
32-02	Shift Rod Nut	64-7	5	1.00	EACH
32-03	Shift Rod With Clevis- 1&2	64-7	1	25.00	
32-04	J Clips (5 Pc)	64-7	1 SET	2.50	SET
32-05	Clevis (for 1&2 Rod)	64-7	1	10.00	
32-06	Shift Rod Swivel- 3&4	64-7	1	5.00	
32-07	Shift Rod- Reverse	64-7	1	20.00	
32-08	Shift Rod- 3&4	64-7	1	20.00	
32-09	Shift Swivel Washers (2 Pc)	64-7	1 PR	0.50	PAIR
32-10	Clevis Pin & Cotter Pin	64-7	1	1.00	
32-11A	Nuts For Shift Levers On Transmission (3)	64-7	1 SET	1.00	SET
32-11B	Shifter Shaft Seal For Muncie Transmission (1)	63L-7	3	8.50	EACH
32-11D	Trans Shifter Cam Detent Spring	63L-7	1	5.00	
32-12	Shift Lever On Transmission- 1&2	64-7	1	10.00	
32-13	Shift Lever On Transmission- 3&4	64-7	1	10.00	
32-14	Shift Lever On Transmission- Reverse	64-7	1	10.00	
32-46E	Shifter Linkage 4 Spd (#'s 1-14 As Needed)	64-7	1	75.00	
32-15A	Shifter Mounting Bracket (with 3 Screws)	64-6E	1	20.00	
32-15B	Shifter Mounting Bracket (after 10/22/65)	66-7	1	25.00	
32-16A	Shifter Bracket Screw Set (set Of 3)	64-5	1 SET	2.25	SET
32-16B	Shifter Bracket Bolt Set	66-7	1 SET	2.50	SET
32-17A	Shifter Mounting Bolt Set (63 All, 64 Auto)	63-4	1 SET	2.25	SET
32-17B	Shifter Mounting Bolt Set	64-7	1 SET	1.75	SET
32-17C	Auto Shifter Mounting Screw Set (3 Pc)	65-7	1 SET	2.25	SET
32-19A	Shift Knob 4 Spd (black)	63	1	6.00	
32-19B	Shift Knob Auto (black)	63	1	6.00	
32-19C	Shift Knob Auto (chrome)	64	1	25.00	
32-19D	Shift Knob 4 Spd (chrome)	64-7	1	14.00	
32-19E	Shift Knob Auto (black)	65-7	1	25.00	
32-19F	Shift Knob Button Auto (chrome)	65-7	1	12.00	
32-20A	Reverse Lockout Spring 4 Spd	64-7	1	5.00	
32-20B	Auto Shifter Lockout Spring (nos)	65-7	1	5.00	
32-22A	Reverse Lockout Handle & Spring	63	1	50.00	
32-22B	Reverse Lockout T Handle & Rod	64-7	1	20.00	
32-23	Shifter T Bushings (pr)	63-7	1 PR	2.00	PAIR
32-24	Shifter Chrome Shaft	64-7	1	109.00	
32-25	Shifter Reverse Lockout Rod	64-7	1	4.00	
32-26A	Shifter Clevis Spring Washer (63=3,63-4 Pg=1)	63-4	1-3	1.00	EACH
32-26B	Spring Washer For Shifter	64-7	1	2.00	
32-27	Reverse Lockout Pin	64-7	1	3.50	
32-28	Shifter Pivot Shaft	64-7	1	7.00	
32-29	Shifter Shaft Clip	64-7	1	1.00	
32-30	Shifter Shaft Pin	64-7	1	7.50	
32-31	J Clip	64-7	1	0.50	
32-32	Shifter Upper Housing (NOS)	64-7	1	35.00	
32-33	Shifter Lower Housing	64-7	1	19.00	
32-34	Shifter Lever Reverse	64-7	1	14.00	
32-35A	Shifter Reverse Lockout (5/64")	64-7	1	8.00	
32-35B	Shifter Reverse Lockout (7/64")	64-7	1	8.00	
32-36	Shifter Lever 1&2	64-7	1	14.00	
32-37	Shifter Lever 3&4	64-7	1	14.00	
32-38	Back Up Light Rod (with Clips #39)	63L-7	1	6.50	
32-39	Back Up Light Rod Clips (1 Pr)	63L-7	1 PR	0.50	PAIR
32-40	Bu Light Switch 4 Spd	63L-7	1	59.00	
32-41	Bu Light Switch Bracket	63L-7	1	8.00	
32-42	Bu Light Switch Shield	63L-7	1	6.50	
32-43	Bu Light Switch Screws & Lw (2 Ea)	63L-7	1 SET	1.00	SET
32-44A	Shifter Adj Gauge & Instructions	63	1	3.00	
32-44B	Shifter Adj Gauge & Instructions	64-7	1	1.00	
32-45A	Shifter- 4 Spd With Knob	63	1	359.00	
32-45B	Shifter- Auto With Knob	63	1	269.00	
32-45C	Shifter- Auto With Knob	64	1	278.00	
32-45D	Shifter- Auto With Knob	65-7	1	295.00	
32-45E	Shifter- 4 Spd With Knob	64-7	1	210.00	
32-45F	Auto Shifter Bushings (1 Pr)	65-7	1 PR	10.00	PAIR
32-45G	Auto Shifter Rubber Grommet (to Linkage)	65-7	1	2.25	
32-45H	Shifter Antirattle Spring	63	1	6.00	
32-46A	Shifter Linkage (bw) 4 Spd	63	1	95.00	
32-46B	Shifter Linkage (muncie) 4 Spd	63	1	95.00	
32-46C	Shifter Linkage Auto	63-4	1	39.00	
32-46D	Shifter Linkage Auto	65-7	1	45.00	
32-46E	Shifter Linkage 4 Spd (#'s 1-14)	64-7	1	75.00	
32-47	Trans To Bellhousing Bolts (see 38-21)				
32-48A	Auto Neutral Safety Switch	63-4	1		N/A
32-48B	Auto Neutral Safety/bu Light Switch	63-4	1		N/A
32-48C	Auto Neutral Safety/backup Light Switch	65-7	1	195.00	

Sec-Part#	Name	Year	#/Car	Price	Inc
32-48D	S Clip For Auto N/s-b/u Switch Wires	65-7	1	8.50	
32-48E	N/s-b/u Switch Screws (pr)	65-7	1 PR	1.00	PAIR
32-48F	Rod & Swivel For N/s Or N/s-b/u Switch	63-4	1	15.00	
32-48G	Bolts,washers & Clip For N/s Or B/u Switch Mount	63-4	1 SET	4.00	SET
	> Warner Transmission Tag:				
32-57A	3819107w T-10 3 Spd (before #12000)	63E	1	25.00	
32-57B	3839724w T-10 4 Spd(wr)(250-300hp Before #12000)	63E	1	25.00	
32-57C	3839723w T-10 4 Spd(cr)(340-360hp Before #12000)	63E	1	25.00	
	> Muncie Transmission Tag:				
32-58A	3839715 Muncie 3 Spd (after #12000)	63L	1	25.00	
32-58B	3831703 Muncie 4 Spd(wr)(250-300hp After #12000)	63L	1	25.00	
32-58C	3831701 Muncie 4 Spd(cr)(340-360hp After #12000)	63L	1	25.00	
32-58D	3855707 3 Spd	64	1	25.00	
32-58E	3839602 4 Spd (wr)(250-300hp)	64	1	25.00	
32-58F	3839601 4 Spd (cr)(365-375hp)	64	1	25.00	
32-58G	3855707 3 Spd (250hp)	65	1	25.00	
32-58H	3857580 4 Spd M20 (wr)(250-300hp)	65	1	25.00	
32-58J	3857573 4 Spd M20 (cr)(365-375hp)	65	1	25.00	
32-58K	3857579 4 Spd M20 (cr)(350hp)	65	1	25.00	
32-58L	3857581 4 Spd M20 (cr)(396/425hp)	65	1	25.00	
32-58M	3860097 3 Spd (300hp)	66	1	25.00	
32-58N	3870354 4 Spd M20 (wr)(300)	66	1	25.00	
32-58P	3880853 4 Spd M21 (cr)(350)	66	1	25.00	
32-58Q	3879987 4 Spd M22 (425hp)	65-6	1	25.00	
32-58R	3860097 3 Spd (300hp)	67	1	25.00	
32-58S	3870354 4 Spd M20 (wr)(300)	67	1	25.00	
32-58T	3880853 4 Spd M21 (cr)(350hp)	67	1	25.00	
32-58U	3880855 4 Spd M21 (cr)(390,400,435)	67	1	25.00	
32-58V	3879987 4 Spd M22 (430hp-88)	67	1	25.00	
32-58W	3879986 4 Spd M22 (365-375hp)	65	1	25.00	
32-58X	3880855 4 Spd M21 (cr)(390-425)	66	1	25.00	
32-59A	T-10 Transmission Gasket Set (9 Pc)	63E	1	20.00	
32-59B	Muncie Transmission Gasket Set (10 Pc)	63-7	1 SET	20.00	SET
32-61	Speedo Gear Round Fitting & Seal	63-7	1	21.00	
32-62	Speedo Gear Fitting Retainer & Screw	63-7	1	3.75	
32-63	Speedo Steel Drive Gear (3.08-3.55 Rear)	63-7	1	35.00	
32-63A	Speedo Driven Gear (brown)(18 Teeth)(3.08 Rear)	63-7	1	12.50	
32-63B	Speedo Driven Gear (natural)(19 Teeth)	63-7	1	12.50	
32-63C	Speedo Driven Gear (blue)(20 Teeth)(3.36 Rear)	63-7	1	12.50	
32-63D	Speedo Driven Gear (red)(21 Teeth)(3.55 Rear)	63-7	1	12.50	
32-63E	Speedo Driven Gear (silver)(22 Teeth)	63-7	1	12.50	
	>32-63a,b,c,d,e Must Be Used With 32-63 Drive				
	If Speedo Reads Too High, A Gear With 1 More Tooth Will Slow It Down 5mph				
32-64	Speedo Steel Drive Gear (3.70-4.11 Rear)	63-7	1	35.00	
32-64A	Speedo Driven Gear (green)(22 Teeth)(3.70 Rear)	63-7	1	12.50	
32-64B	Speedo Driven Gear (black)(23 Teeth)	63-7	1	12.50	
32-64C	Speedo Driven Gear (yellow)(24 Teeth)(4.11 Rear)	63-7	1	12.50	
32-64D	Speedo Driven Gear (orange)(25)(4.56 Rear)	63-7	1	15.00	
	>32-64a,b,c,d Must Be Used With 32-64 Drive Gear.If Speedo Reads Too High, A Driven Gear With One More Tooth Will Slow It Down Approximately 5 Mph				
32-65	Transmission Rear Yoke Seal	63-7	1	9.50	
32-65B	Bushing- Transmission Rear Main	63-7	1	5.25	
32-66	Transmission Front Main Shaft Bearing (muncie)	63L	1	15.00	
32-66A	Transmission Front Main Shaft Bearing	64-74	1	30.00	
32-66B	Transmission Housing Frt Shaft Bearing Retainer	64-74	1	75.00	
32-66C	Gasket For Trans Front Bearing Retainer	63	1	2.00	
32-66D	Gasket For Trans Front Bearing Retainer	64-74	1	8.00	
32-66E	Trans Front Bearing Locating Ring	64-7	1	3.00	
32-66F	Bolts For Trans Front Bearing Retainer (4)	64-7	1 SET	4.00	SET
32-66G	French Locks For Trans Front Bearing Retainer	64-7	1 PR	10.00	PAIR
32-66H	Transmission Main Shaft Rear Bearing	64-7	1	15.00	
32-66J	Transmission Main Shaft Rear Bearing- Warner	63E	1	15.00	
32-66K	Transmission Front Main Shaft Nut	63L-7	1	15.00	
32-67A	Transmission Rebuild Kit (63 T-10)	63E	1	250.00	
32-67B	Transmission Rebuild Kit (63 Muncie)	63L	1	250.00	
32-67C	Transmission Rebuild Kit(64-5 Muncie)(7/8"shaft)	64-5	1	250.00	
32-67D	Transmission Rebuild Kit (65-75 Muncie)(1"shaft)	65-75	1	250.00	
	"wearable Parts":main Bearings, Synchro Rings, Gaskets, Seals Countershaft & Small Parts)				
32-67F	Main Shaft (rear)	67	1	250.00	
32-68A	Trans Reverse Detent Ball	63-7	1	1.00	
32-68B	Trans Reverse Detent Spring	63-7	1	5.00	
32-68C	Muncie Trans Side Cover Detent Spring 1-2,3-4	63-7	1	5.00	
32-69A	Transmission Drain Plug	63-7	1	2.50	
32-69B	Transmission Magnetic Drain Plug	63-7	1		N/A
32-99A	Corvette Style Shift Handle For Hurst Shifter	63	1	105.00	
32-99B	Corvette Style Shift Handle For Hurst Shifter	64-7	1	85.00	