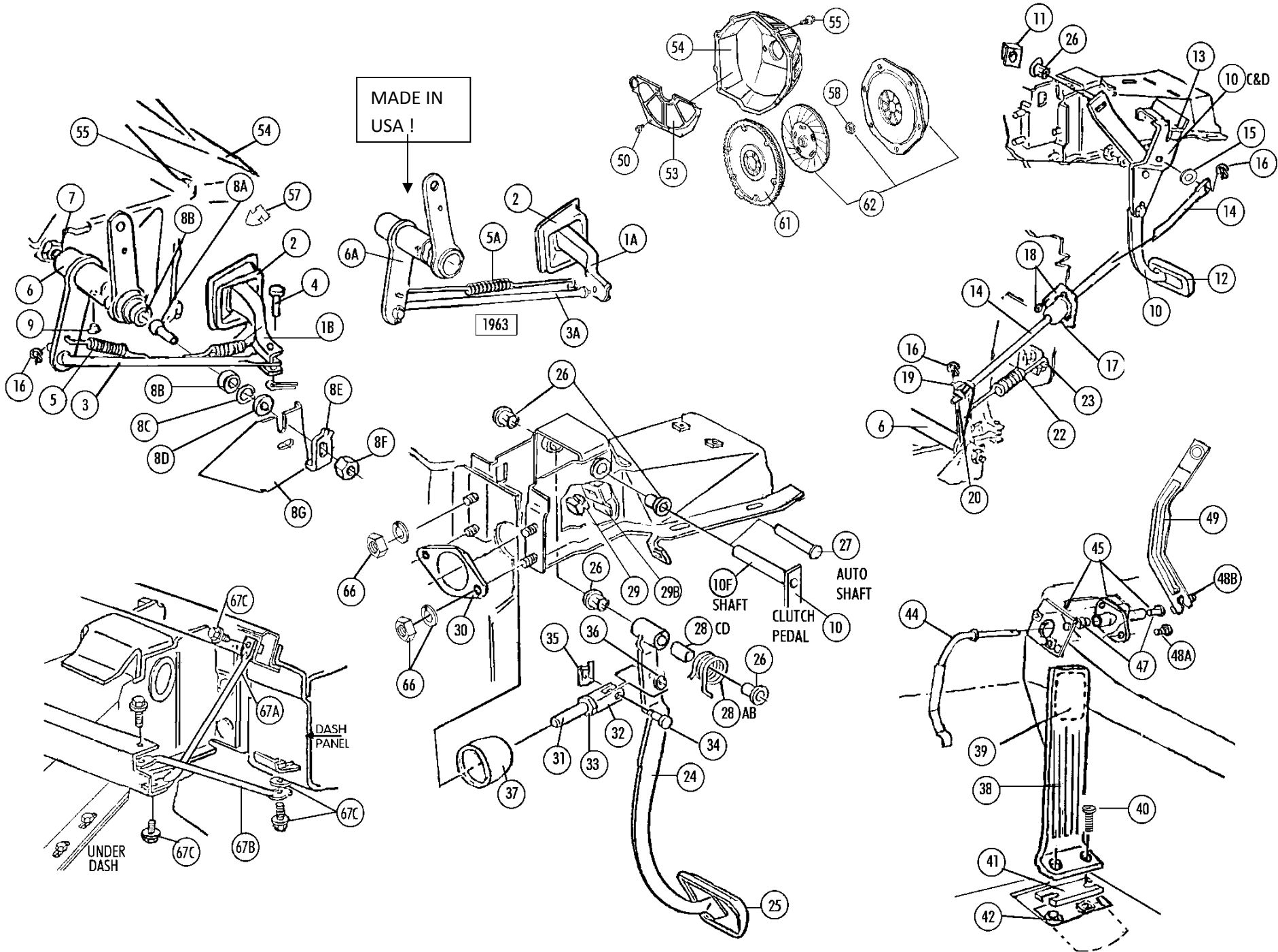


Section #28 Clutch ● Accelerator ● Brake :Rods, Z-Bar Springs, Rods, Pedals, Levers, Switches, Housings, Flywheel



Section #28 Clutch ● Accelerator ● Brake :Rods, Z-Bar Springs, Rods, Pedals, Levers, Switches, Housings, Flywheel

licorvette.com 1-800-466-6367

| Sec-Part# | Name | Year | # | Need/Car | Price |
|-----------|--|-------|-------|----------|----------|
| 28-01A | Clutch Fork | 63 | 1 | | 98.00 |
| 28-01B | Clutch Fork | 64-7 | 1 | | 88.00 |
| 28-01C | Spring Clip & Rivet For Clutch Fork | 63-7 | 1 | | 8.50 |
| 28-02 | Clutch Fork Boot | 63-7 | 1 | | 9.50 |
| 28-03A | Clutch Fork Rod | 63 | 1 | | 27.00 |
| 28-03B | Clutch Fork Rod (327) | 64-5 | 1 | | 23.00 |
| 28-03C | Clutch Fork Rod (396/427) | 65-7 | 1 | | 23.00 |
| 28-03D | Clutch Fork Rod (327) | 66-7 | 1 | | 23.00 |
| 28-04 | Fork Rod Pin And Cotter Pin | 64-7 | 1 | | 2.00 |
| 28-05A | Antirattle Spring | 63 | 1 | | 5.00 |
| 28-05B | Antirattle Springs (1 Pair) | 64-7 | 1 PR | PAIR | 7.00 |
| 28-06A | Clutch Cross Shaft (327) (usa) (z-bar) | 63-5 | 1 | | 85.00 |
| 28-06B | Clutch Cross Shaft (396/427) (usa) (z-bar) | 65-7 | 1 | | 85.00 |
| 28-06C | Clutch Cross Shaft (327) (usa) (z-bar) | 66-7 | 1 | | 85.00 |
| 28-07A | Clutch Stud & Seal To Engine | 63-7 | 1 | | 21.00 |
| 28-07B | Rubber Seal For Clutch Ball To Engine | 63-7 | 1 | | 2.00 |
| 28-08A | Clutch Stud To Frame | 63-7 | 1 | | 13.00 |
| 28-08B | Plastic Seat- Clutch Ball (pr) | 63-7 | 1 PR | PAIR | 6.25 |
| 28-08C | Spring Retainer- Clutch Seat | 63-7 | 1 | | 4.00 |
| 28-08D | Clutch Ball Felt Seal To Frame | 63-7 | 1 | | 0.75 |
| 28-08E | Clutch Ball Lock Washer | 63-7 | 1 | | 3.50 |
| 28-08F | Clutch Ball Nut | 63-7 | 1 | | 0.25 |
| 28-08G | Frame Bracket-weld To Frame(for Clutch Ball) | 63-7 | 1 | | 15.00 |
| 28-08H | Clutch Ball Set (8a-8f) | 63-7 | 1 SET | SET | 25.50 |
| 28-09A | Cross Shaft Grease Fitting | 63-7 | 1 | | 0.75 |
| 28-09B | Red Plug For Cross Shaft | 64-7 | 1 | | 2.00 |
| 28-10A | Clutch Pedal With Shaft(use With Pin Bkt 10c,10d | 63-6 | 1 | | 62.00 |
| 28-10B | Clutch Pedal With Shaft (including Pin Bkt 10e) | 67 | 1 | | 77.00 |
| 28-10C | Clutch Pedal Pin Bracket (327) | 63-6 | 1 | | 23.00 |
| 28-10D | Clutch Pedal Pin Bracket (396/427) | 65-6 | 1 | | 23.00 |
| 28-10E | Clutch Pedal Pin Bracket (67 All)(weld On) | 67 | 1 | | 23.00 |
| 28-10F | Clutch Pedal Shaft | 63-7 | 1 | | 12.00 |
| 28-10G | Bolt Set For Pin Bracket | 63-6 | 1 SET | SET | 2.00 |
| 28-11 | Retainer Clip (clutch Pedal) | 63-7 | 1 | | 1.25 |
| 28-12 | Clutch Pedal Pad | 63-7 | 1 | | 7.00 |
| 28-13 | Clutch Pedal Bumper | 63-7 | 1 | | 2.00 |
| 28-14A | Clutch Push Rod (327)(correct Length) | 63-5 | 1 | | 26.00 |
| 28-14B | Clutch Push Rod (65/396,66-7/327,427) | 65-7 | 1 | | 26.00 |
| 28-15 | Clutch Push Rod Spacer | 63-7 | 1 | | 1.00 |
| 28-16 | Retainer Clip (j-clip)(pr) | 63-7 | 1 PR | PAIR | 1.00 |
| 28-17A | Clutch Rod Boot (2 Hole)(until Early 65) | 63-5E | 1 | | 10.00 |
| 28-17B | Clutch Rod Boot (3 Hole)(starting Late 65) | 65L-7 | 1 | | 11.00 |
| 28-18A | Two Hole Boot Retainer With 2 Bolts | 63-5E | 1 | | 8.00 |
| 28-18B | Three Hole Boot Retainer With Rivets & Screws | 65L-7 | 1 | | 6.50 |
| 28-18C | Clutch Boot Screws (3 Pc) | 65-7 | 1 SET | SET | 1.00 |
| 28-19 | Clutch Push Rod Swivel | 63-7 | 1 | | 6.00 |
| 28-20 | Clutch Push Rod Swivel Nuts (pr) | 63-7 | 1 PR | PAIR | 0.75 |
| 28-22 | Clutch Return Spring | 63-7 | 1 | | 5.00 |
| 28-23A | Clutch Return Spring Bracket | 63-6 | 1 | | 8.50 |
| 28-23B | Clutch Return Spring Bracket | 67 | 1 | | 7.50 |
| 28-24A | Brake Pedal | 63-6 | 1 | | 60.00 |
| 28-24B | Brake Pedal With Auto | 63-6 | 1 | | 60.00 |
| 28-24C | Brake Pedal | 67 | 1 | | 60.00 |
| 28-24D | Brake Pedal With Auto | 67 | 1 | | 60.00 |
| 28-25A | Brake Pedal Pad | 63-7 | 1 | | 7.00 |
| 28-25B | Brake Pedal Pad -Power Brakes | 63-7 | 1 | | 7.00 |
| 28-25C | Brake Pedal Pad Auto | 63-7 | 1 | | 8.00 |
| 28-25D | Brake Pedal Pad Auto + P/B | 63-7 | 1 | | 8.00 |
| 28-26 | Brake & Clutch Pedal Bushings (4 Pc) | 63-7 | 1 SET | SET | 4.50 |
| 28-27 | Brake Pedal Shaft- Auto | 63-7 | 1 | | 15.00 |
| 28-28A | Brake Pedal Return Spring | 63-6 | 1 | | 5.00 |
| 28-28B | Brake Pedal Return Spring | 67 | 1 | | 5.00 |
| 28-28C | Brake Spring Bushing | 63-6 | 1 | | 4.00 |
| 28-28D | Brake Spring Bushing | 67 | 1 | | 2.00 |
| 28-29 | Brake Pedal Bumper | 63-7 | 1 | | 2.00 |
| 28-29B | Brake Pedal Bumper & Switch Bracket (weld On) | 63-6 | 1 | | 25.00 |
| 28-30 | Master Cylinder Gasket (no P/B) | 63-7 | 1 | | 2.00 |
| 28-31 | Brake Push Rod | 63-7 | 1 | | 5.00 |
| 28-32 | Clevis (standard Or Power Brakes) | 63-7 | 1 | | 15.00 |
| 28-33 | Push Rod Nut | 63-7 | 1 | | 0.50 |
| 28-34 | Brake Clevis Pin | 63-7 | 1 | | 3.50 |
| 28-35 | Retainer (for Brake Clevis Pin) | 63-7 | 1 | | 1.00 |
| 28-36 | Washer (bowed) | 63-7 | 1 | | 1.00 |
| 28-37 | Brake Master Cylinder Boot (non P/B) | 63-7 | 1 | | 6.50 |
| 28-38A | Accelerator Pedal (with #39)(good Repro) | 63-7 | 1 | | 15.00 |
| 28-38B | Accelerator Pedal (with #39)(best Repro) | 63-7 | 1 | | 30.00 |
| 28-39 | Accelerator Anti-squeak Pad | 63-7 | 1 | | 1.50 |
| 28-40 | Accelerator Pedal Screws (pr) (zinc) | 63-7 | 1 SET | SET | 2.00 |
| 28-41 | Accelerator Pedal Spacer | 63-7 | 1 | | 4.75 |
| 28-42A | Accel Pedal Mounting Bracket With Rivets | 63 | 1 | | 7.50 |
| 28-42B | Accel Pedal Mounting Bracket With Rivets | 64-7 | 1 | | 8.50 |
| 28-44A | Accelerator Pedal Swivel Rod | 63 | 1 | | 25.00 |
| 28-44B | Accelerator Pedal Swivel Rod | 64-7 | 1 | | 25.00 |
| 28-45 | Accel Swivel, Support, Bushing & Bolt Set | 63-7 | 1 SET | SET | 22.00 |
| 28-47 | Accel Rod Bushings (pr) | 63-7 | 1 PR | PAIR | 2.00 |
| 28-48A | Accelerator Swivel Bolts & Washers (2 Each) | 63-7 | 1 SET | SET | 1.50 |
| 28-48B | Accelerator Lever Bolt, Nut & Washers | 63-7 | 1 SET | SET | 2.50 |
| 28-49A | Accelerator Lever (250-360hp) | 63 | 1 | | 26.00 |
| 28-49C | Accelerator Lever (250+350+365hp+375hp) | 64-5 | 1 | | 26.00 |
| 28-49D | Accelerator Lever (300hp) | 64-5 | 1 | | 26.00 |
| 28-49F | Accel Lever (65/396,66/390-425 4spd,66-7/327) | 65-7 | 1 | | 26.00 |
| 28-49G | Accelerator Lever (427/390 Auto) | 66 | 1 | | N/A |
| 28-49H | Accelerator Lever (427/390-400 Auto) | 67 | 1 | | N/A |
| 28-49K | Accelerator Lever (427/390-435 4 Spd) | 67 | 1 | | 26.00 |
| 28-50A | Clutch Inspection Plate Bolts (slotted)(4 Pc) | 63-6 | 1 SET | SET | 3.25 |
| 28-50B | Clutch Inspection Plate Bolts (hex)(4 Pc) | 67 | 1 SET | SET | 3.25 |
| 28-51 | Striker, Screw And Nut (for Power Brake Switch) | 63-7 | 1 | | 4.75 |
| 28-53A | Clutch Inspection Plate (327/396) | 63-7 | 1 | | 26.00 |
| 28-53B | Clutch Inspection Plate (427) | 66-7 | 1 | | 22.00 |
| 28-53C | Powerglide Lower Cover (see 58-24) | 63-7 | | | |
| 28-54A | Clutch Housing (3788421)(used Only) | 63 | 1 | | N/A |
| 28-54B | Clutch Housing (327/396/L88)(3858403)(used) | 64-7 | 1 | | N/A |
| 28-54C | Clutch Housing (427)(3872444)(used) | 66 | 1 | | N/A |
| 28-54D | Clutch Housing (427)(3899621)(new) | 66-7 | 1 | | 195.00 |
| 28-55 | Clutch Bell Housing Bolts (6 Pc) | 63-7 | 1 SET | SET | 7.00 |
| 28-57 | Ball Stud In Clutch Housing | 63-7 | 1 | | 15.00 |
| 28-58 | Clutch Throwout Bearing | 63-7 | 1 | | 20.00 |
| 28-59A | Brake Light Switch (metal) (see 28-59b) | 63-6 | 1 | | N/A |
| 28-59B | Brake Light Switch (white Plastic/original 67) | 63-7 | 1 | | \$ 12.00 |
| 28-60 | Nuts For Brake Light Switch (pr) | 63-7 | 1 PR | PAIR | 1.00 |
| 28-61A | Flywheel (327)(4 Spd)(see 28-61ar) | 63-7 | 1 | | N/A |
| 28-61AR | Flywheel (327)(3-4 Spd)imported | 63-7 | 1 | | 185.00 |
| 28-61B | Flywheel- Low Mass (396 & L88) | 65&7 | 1 | | 210.00 |
| 28-61C | Flywheel (427/4spd) | 66-7 | 1 | | 249.00 |
| 28-61D | Flywheel (flexplate)(327/auto) | 63-7 | 1 | | 125.00 |
| 28-61E | Flywheel (flexplate)(427/auto) | 66-7 | 1 | | 125.00 |
| 28-61F | Flywheel Ring Gear Only (10-1/2") (327/396) | 63-7 | 1 | | 45.00 |
| 28-61G | Flywheel Ring Gear Only (11") (427) | 66-7 | 1 | | 45.00 |
| 28-61H | Bolts For Flexplate (6+3) (auto) | 63-7 | 1 SET | SET | 6.75 |
| 28-62A | Clutch Kit (327,396,L88)(pressure Plate,clutch Disk,throwout Bearing Set | 63-7 | 1 | | 235.00 |
| 28-62B | Clutch Kit (427)(pressure Plate,disk,throwout Bearing Set | 66-7 | 1 | | 240.00 |
| 28-62C | Clutch Pressure Plate To Flywheel Bolt Set (6) | 63-7 | 1 SET | SET | 8.00 |
| 28-63B | Clutch Disk (427) | 66-7 | 1 | | N/A |
| 28-64A | Transmission Pilot Bushing (bronze) | 63-7 | 1 | | 5.50 |
| 28-64B | Transmission Pilot Bearing (needle Bearing) | 63-7 | 1 | | 24.50 |
| 28-65 | Flywheel Bolts And Lw (6 Ea) | 63-7 | 1 SET | SET | 6.00 |
| 28-66A | Nut & Lw- Master Cyl & Brake Bkt To Cowl | 63 | 1 SET | SET | 1.50 |
| 28-66B | Nut & Lw- Master Cyl & Brake Bkt To Cowl | 64-5 | 1 SET | SET | 1.50 |
| 28-66C | Nut & Lw- Master Cyl & Brake Bkt To Cowl | 66-7 | 1 SET | SET | 1.75 |
| 28-67A | Brace Rod Under Dash- Upper | 63-7 | 1 | | 15.00 |
| 28-67B | Brace Rod Under Dash- Lower | 63-7 | 1 | | 15.00 |
| 28-67C | Bolts For Under Dash Rods & Pedal Housing To Cro Cross Brace | 63-7 | 1 SET | SET | 6.50 |