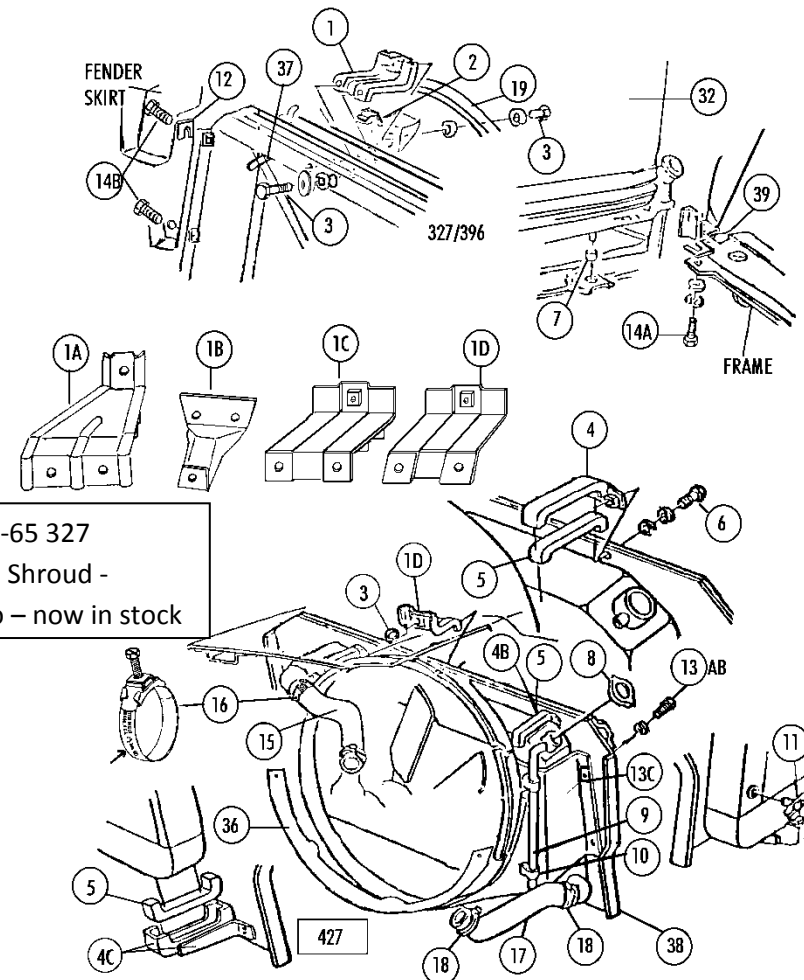


## Section # 25 Radiators ● Shrouds ● Supports ● Brackets ● Hose Clamp Sets

PART#	NAME	YEAR #/CAR	PRICE INC
25-01A	Radiator Shroud Bracket (327)	63-5 1	25.00
25-01B	Radiator Shroud Bracket (396/L88)	65 1	30.00
25-01C	Radiator Shroud Bracket (327)	66-7 1	20.00
25-01D	Radiator Shroud Bracket (427)	66-7 1	20.00
25-02	Rubber Cushion (327/396) For Top Rad Bracket	63-7 1	4.00
25-03A	Shroud Bracket Bolt Set (327) (WB Hdmk)	63-5 1 SET	2.25 SET
25-03B	Shroud Bracket Bolt/washer Set (327/427) (RSC/WB)	66-7 1 SET	5.00 SET
25-03C	Shroud Bracket Bolt & Washer Set (396,L88) (RSC/WB)	65,67 1 SET	3.50 SET
25-04A	Radiator Upper Bracket Lh (427)	66-7 1	13.00
25-04B	Radiator Upper Bracket Rh (427)	66-7 1	13.00
25-04C	Radiator Lower U-bracket & Reinforcement- 427 (weld On)(2+2)	66-7 1 SET	20.00 SET
25-05	Bracket Cushion 427 (1)	66-7 4	4.00 EACH
25-06	Bkt Bolt & Washer Set (for #4)(1 Ea)(427) (RSC)	66-7 1 SET	8.00 SET
25-06B	Tubes For 427 Radiator Support Upper Bolts (2)	66L-7 1 PR	8.00 PAIR
25-07	Lower Radiator Round Cushions (327/396) (pr)	63-7 1 PR	3.00 PAIR
25-08	Radiator Cap (see Sect 24-02 , Expansion Tanks see section 24		
25-09	Overflow Hose (327/396/427) (ribbed)	63-7	5.00
25-10	Overflow Hose Straps (427)(pr)	65-7 1 PR	2.50 PAIR
25-11A	Radiator Draincock- Aluminum (327/396)	63-7 1	16.00
25-11B	Radiator Brass Draincock (427)(or Brass 327 Rad)	65-7 1	4.50
25-11C	Aluminum Radiator Aluminum Drain Plug (327)	66 1	6.50
25-11D	Brass Drain Plug (427)	66 1	3.50
25-12	Radiator Support Shim (1/16" Thick)	63-7 -	0.75 EACH
25-13A	Shroud Bolts & Lockwasher (6 Ea) (WB)	63-5 1 SET	4.50 SET
25-13B	Shroud Bolts & Lws (4 Ea) (WB)	66-7 1 SET	3.00 SET
25-13C	Shroud U-nuts (4 Pc)	66-7 1 SET	2.00 SET
25-13D	Shroud U-nuts (396)(6 Pc)	65 1 SET	3.00 SET
25-14A	Radiator Support Bolt & Washer Set (WB)(from Btm	63-7 1 SET	4.50 SET
25-14B	Radiator Support Side Bolts & Lw (4 Ea) (WB)	63-7 1 SET	3.00 SET
25-15/17	Upper Hose (see Sect 21-01) , Lower Hose (see Sect 21-03) >> Rad clamps: (give Date Or Serial # 1st And 3rd Quarter)		
25-16	Upper Radiator Hose Clamps (327/396/427)(dated)	63-7 1 PR	17.00 PAIR
25-18A	Lower Radiator Hose Clamps (327/427)(dated)	63-7 1 PR	17.00 PAIR
25-18B	Lower Radiator Hose Clamps (396)(dated)	65 1 PR	17.00 PAIR
25-19	<b>Radiator Shroud (327)(metal) – new repro – in stock</b>	<b>63-5 1</b>	<b>\$ 399.00 new – in stock !</b>
25-20A	Radiator Fiberglass Shroud (327)(3 Pc Assembled)	66-7 1	\$ 340.00
25-20B	Radiator Fiberglass Shroud (396)(2 Pc Assembled)	65 1	340.00
25-20C	Radiator Fiberglass Shroud (427)(3 Pc Assembled)	66-7 1	\$ 360.00



#25-19 63-65 327  
Metal Fan Shroud -  
new repro – now in stock

### Hose Clamp Sets

Hose Clamp Sets Include: Applicable Clamps For Radiator, Heater, Bypass & Tripower A/C Hose  
**Dates Only On Up & Lower Rad Clamps:** (Give Year Of Car, Vin #, Or Date Needed: 1st & 3rd Qtr Of Each Year)

25-21	Hose Clamp Set 327 (14 Pc)	63-7 1 SET	40.00 SET
25-22	Hose Clamp Set 327 With A/c (18 Pc) (thru 1/66)	63-6E 1 SET	42.00 SET
25-23	Hose Clamp Set 327 With A/c (16 Pc) (after 1/66)	66-7 1 SET	41.00 SET
25-24	Hose Clamp Set 327 Hiper (16 Pc)	63-7 1 SET	43.00 SET
25-25	Clamp Set 327 Hiper & A/c (20 Pc) (thru 11/65)	63-6E 1 SET	45.00 SET
25-26	Clamp Set 327 Hiper & A/c (18 Pc) (after 11/65)	66L-7 1 SET	44.00 SET
25-27	Hose Clamp Set 427 (10 Pc)	66-7 1 SET	36.00 SET
25-28	Hose Clamp Set 427 With A/c (12 Pc)	66-7 1 SET	37.00 SET
25-29	Hose Clamp Set 427 Tripower (12 Pc)	67 1 SET	39.00 SET
25-30	Clamp Set 427 Tripower With A/C (14 Pc)	67 1 SET	40.00 SET
25-31	Hose Clamp Set 396 (16 Pcs)	65 1 SET	52.00 SET

### Dewitt's Radiators – Exact Repros – Dated – Special Order 1-2 Weeks For Deliv + Ship \$45

Give Date (month & Year) Needed (+\$45 Shipping)			
25-32A	Radiator (aluminum Reproduction)(327)-dated	63-7 1	\$ 870.00
25-32AR	Aluminum Radiator 327 (not Dated,not Painted,not detailed, - Same As 32a- Dewitt's Exact Repro)	63-7 1	820.00
25-33A	Radiator(aluminum Reproduction(65/396 Early) -	65E 1	N/A
25-33B	Radiator(aluminum Reproduction(65/396 Or 67/L88)	65,67 1	N/A
<b>427 Radiators – Dewitt's – Correct Brass - (these were not dated) – usually in stock:</b>			
25-34A6	Radiator (427 4 Spd)(correct Brass)(Dewitts)	66 1	695.00
25-34A7	Radiator (427 4 Spd)(correct Brass)(Dewitts)	67 1	695.00
25-34B	Radiator (427 Auto)(correct Brass)	66-7 1	N/A
25-36A	Fan Shroud Extension (327 A/C)	66-7 1	89.00
25-36B	Fan Shroud Extension (427 A/C)	66-7 1	89.00
25-36C	A/c Shroud Extension U-nut & Bolt (WB) Set	66-7 1 SET	2.50 SET
25-37A	327 Rad Support Cross Rod Lower Straps (pr)	63-5 1 PR	10.00 PAIR
25-37B	Radiator Support Cross Rods (327/no AC)	63-5 1 PR	12.00 PAIR
25-37C	Rad Support Cross Rods (65/396,66-7/327+427 No AC	65-7 1 PR	12.00 PAIR

See section 21 for Radiator Hoses - See section 24 for individual clamps and hose brackets and straps...  
[www.lcorvette.com](http://www.lcorvette.com) for all updates and photos

### Radiator Supports

25-38A	Radiator Support (4 Spd Or Auto)(no A/C)	63 1	389.00
25-38C	Radiator Support (FI)	63 1	475.00
25-38D	Radiator Support (4 Spd Or Auto)( A/C)	63 1	395.00
25-38F	Radiator Support 327 (4 Spd Or Auto)	64-5 1	329.00
25-38H	Radiator Support (a/c- 4 Spd Or Auto)	64-5 1	339.00
25-38K	Radiator Support (FI)	64-5 1	475.00
25-38KN	Radiator Support (FI)(NOS)	64-5 1	500.00 CALL
25-38L	Radiator Support (396 Or L88)	65+7 1	475.00
25-38R	Radiator Support (327)(no A/C)	66-7 1	339.00
25-38S	Radiator Support (327 A/C)	66-7 1	359.00
25-38T	Radiator Support (427) (no A/C)	66-7 1	359.00
25-38U	Radiator Support (427 A/C)	66-7 1	340.00
25-38Z	Install Anchor Nuts In Support For 327 With Auto	63-7 1	20.00
25-39	Radiator Support Large Square Mounting Nuts (pr)	63-7 1 PR	6.00 PAIR
25-40A	Radiator Lower Support (327/396 Repair Piece)	63-5 1	107.00
25-40B	Radiator Lower Support (327 Repair Piece)	66-7 1	107.00
25-40C	Rad Lower Support(427 Repair Pc)(use With 25-4c)	66-7 1	60.00
25-41A	Metal Tag For 427 Radiator With Auto(MJ 3008566)	66-8 1	15.00
25-41B	Metal Tag For 427 4 Spd Brass Rad (MK 3008567)	66-8 1	15.00