



# Section # 22 Engine (Cont'd): Pcv • Valve Covers • Valve Cover Bolts • Exhaust Bolts (4 Pages)

## Pcv Valves, Adapters, Fittings, Tubes, Hoses

22-11AE	Breather Tube Grommet/metal Retainer Til 5/10/63	63E	1	\$ 15.00
22-11AL	Breather/Pcv Tube Rubber Grommet After 5/10/63	63L	1	6.00
22-11B	Breather Tube Grommet (396 & 427)	65-7	1	2.50
22-12A	Bolt, washer,gasket & Stud Set (250,300)	64-5	1 SET	8.00 SET
22-12B	Bolt, washer,gasket & Bolt Set (350,365,375)	64-5	1 SET	5.00 SET
22-12C	Bolt, washer,gasket & Bolt Set (300/350)	66-7	1 SET	5.00 SET

## Pcv Valves, Adapters, Fittings, Tubes, Hoses

22-13A	Pcv Valve (327)	62-3	1	30.00
22-13B	Pcv Valve (327)	66-7	1	25.00
22-13C	Pcv Valve (427)(original Zinc Plated)	66-7	1	4.50
22-13D	Pcv Adapter & Elbow	63	1	9.50
22-13E	Pcv Carb Vacuum Restriction Elbow (Wcfb, Afb ,FI)	64-5	1	10.00
22-13F	Pcv Valve Grommet (427) (also For 22-10L L88)	66-7	1	4.00
22-13G	Pcv Tube (396)	65	1	28.00
22-13H	Pcv Tube Grommet (396) (in Valve Cover)	65	1	8.50
22-13J	Pcv Elbow In Holley Carb (327)	64-5	1	15.00
22-13K	Pcv And Pb Fitting In Carb (2 Pc)	63	1	30.00
22-13L	Pcv Fitting In Carb (Air Cond)(3 Pc)	63	1	25.00
22-13M	Pcv Fitting (p/b & A/c)(2 Pc Set)	63	1	30.00
22-13N	Pcv Valve Elbow (in FI Plenum)	63	1	4.00
22-13P	Pcv Valve- Black (fi)	62-4E	1	30.00
22-13Q	Pcv Elbow In Carb (396)	65	1	3.50
22-14A	Breather/pcv Hose (327)	63	1	8.00
22-14B	Pcv Hose & Clamps (327)	64-5	1	8.00
22-14C	Pcv Hose & Clamps (427- 4 Bbl)	66-7	1	15.00
22-14D	Pcv Hose & Clamps (3x2)	67	1	9.00
22-14E	Pcv Hose & Clamps (327)	66-7	1	8.00
22-15	Pcv Hose Clamps (pr)	64-7	1 PR	1.50 PAIR
22-16A	Pcv Hose Clip (64-5 327/250-300hp & 66 425)	64-6	1	12.00
22-16B	Pcv Hose Clip On Carb Bolt (390 Hp)	66-7	1	12.00
22-16C	Pcv Hose Clip On Intake Bolt (390 Hp)	66-7	1	12.00

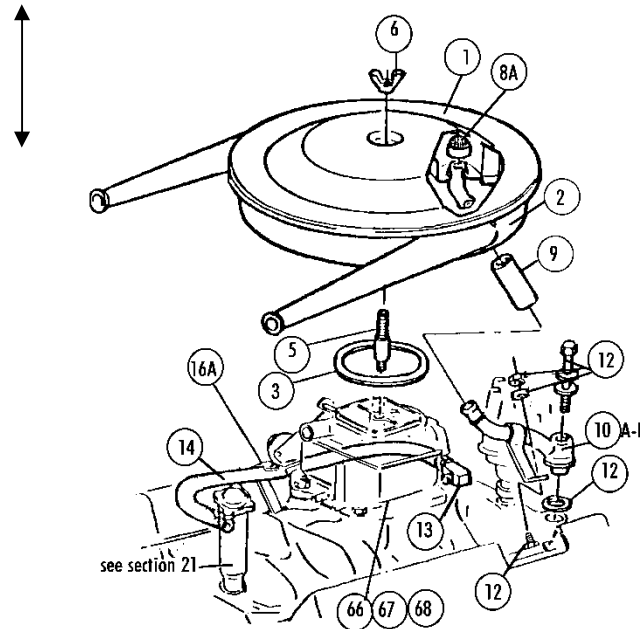
22-17A	Temperature Sender- *recalibrated With correct upside down imprint (comes With Resistor Matched To Each Sender)	63-7	1	35.00
22-18	Metal Terminal	63-7	1	0.50
22-19	Plastic Terminal Cover (Black)	63-7	1	1.50
22-20A	Wire Insulator	63-7	1	2.00
22-20B	Temp Wire Insulator Kit(#18,19,20,21)hiper	63-7	1	9.00
22-20C	Temp Wire Insulator Kit(18,19,20)(327,396 & 427)	63-7	1	3.00
22-21A	Wire Clips- 327 Alum V/C (pr)	63-7	1 PR	6.00 PAIR
22-21B	Temp Sender Wire Clips On Steel V/C (pr)(weld On) (327/396/427)	63-7	1 PR	5.00 PAIR

## Valve Covers – All Correct Repro - yes Big Block Valve Covers have drippers

22-22A4	Steel Valve Covers-(pr) (327/63L,64,65,66)(after 63 #13000)	63L-6	1 PR	\$ 100.00 PAIR
22-22A7	Steel Valve Covers (67 327/300) (pr)	67	1 PR	160.00 PAIR
22-22M	Aluminum Valve Cover (340-375hp) cleaned, No Seam (1)	63-6	2	120.00 EACH
22-22B	Aluminum Valve Cover (67 350hp) cleaned With Seam (1)	67	2	120.00 EACH
22-22C	Valve Cover (lh) (396/427) (no Wire Support)	65-6	1	125.00 EACH
22-22D	Valve Cover (lh) (427) (with Wire Support)	67	1	125.00 EACH
22-22E	Valve Cover (rh) (396/427) (all Except 66 Early)	65-7	1	125.00 EACH
22-22F	Valve Cover (rh) (dimpled) (427)(66 Early Only)	66E	1	125.00 EACH
22-22H	Valve Covers (396/427)(65 All+late 66)(pr)	65-6	1 PR	200.00 PAIR
22-22J	Valve Covers (427)(all 66 Early)(A/C Dimple)(pr)	66E	1 PR	200.00 PAIR
22-22K	Valve Covers (427)(67 All)(pr)	67	1 PR	200.00 PAIR
22-22L	Valve Covers (chrome 67 L89)	67	1 PR	200.00 PAIR

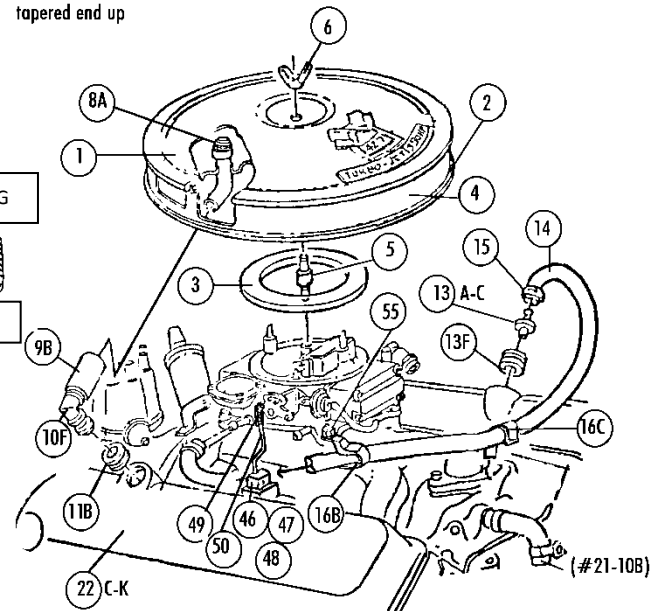
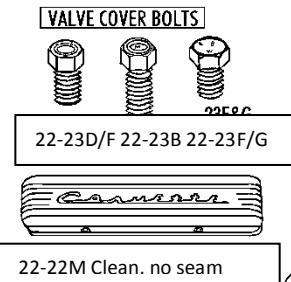
## Valve Cover Bolts With Headmarks

22-23A	Alum Valve Cover Bolts 327 (Phillips) (8 Pc) (thru 3/63)	63E	1 SET	4.00 SET
22-23B	Alum Valve Cover Bolts 327 (M Headmark)(8 Pc)	63L-7	1 SET	8.00 SET
22-23D	Steel Valve Cover Bolts 327 (RBW Hdmk)(8 Pc)	63-6	1 SET	8.00 SET
22-23E	Steel Valve Cover Bolts 327 (RBW Hdmk)(8 Pc)	67	1 SET	8.00 SET
22-23F	Steel Valve Cover Bolts 396/427 (RBW Hdmk)(14 Pc)	65-6	1 SET	14.00 SET
22-23G	Steel Valve Cover Bolts 427 (RBW+SBC Hdmk)(10+4 Pc)	67	1 SET	14.00 SET
22-23GA	Steel Valve Cover Bolts 427+a/c (RBW+SBC Headmark)(9+5)	67	1 SET	14.00 SET
22-23GB	Steel Valve Cover Bolts 427 No Radio (RBW Hdmk) (14)	67	1 SET	14.00 SET
22-24A	Steel Valve Cover Bolt Reinforcements 327 (8 Pc)	63-5	1 SET	6.00 SET
22-24B	Steel Valve Cover Bolt Reinforcements 327 (8 Pc)	66-7	1 SET	6.00 SET
22-24C	Steel Valve Cover Bolt Reinforcements 396/427 (14 Pc)	65-7	1 SET	10.50 SET
22-25A	Valve Cover Gaskets 327 (pr) (cork/rubber)	63-7	1 PR	8.50 PAIR
22-25B	Valve Cover Gaskets 396/427 (pr) (cork/rubber)	65-7	1 PR	17.50 PAIR



Valve cover bolts  
RBW M RBW

Note: A/C stud to be installed tapered end up



See Photos on website –  
Secure Online Ordering [www.licorvette.com](http://www.licorvette.com)

Section# 22 Engine: Exhaust Manifold Bolts • Fuel Lines • Fuel Filter (4 Pages)

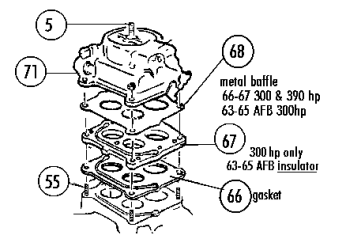
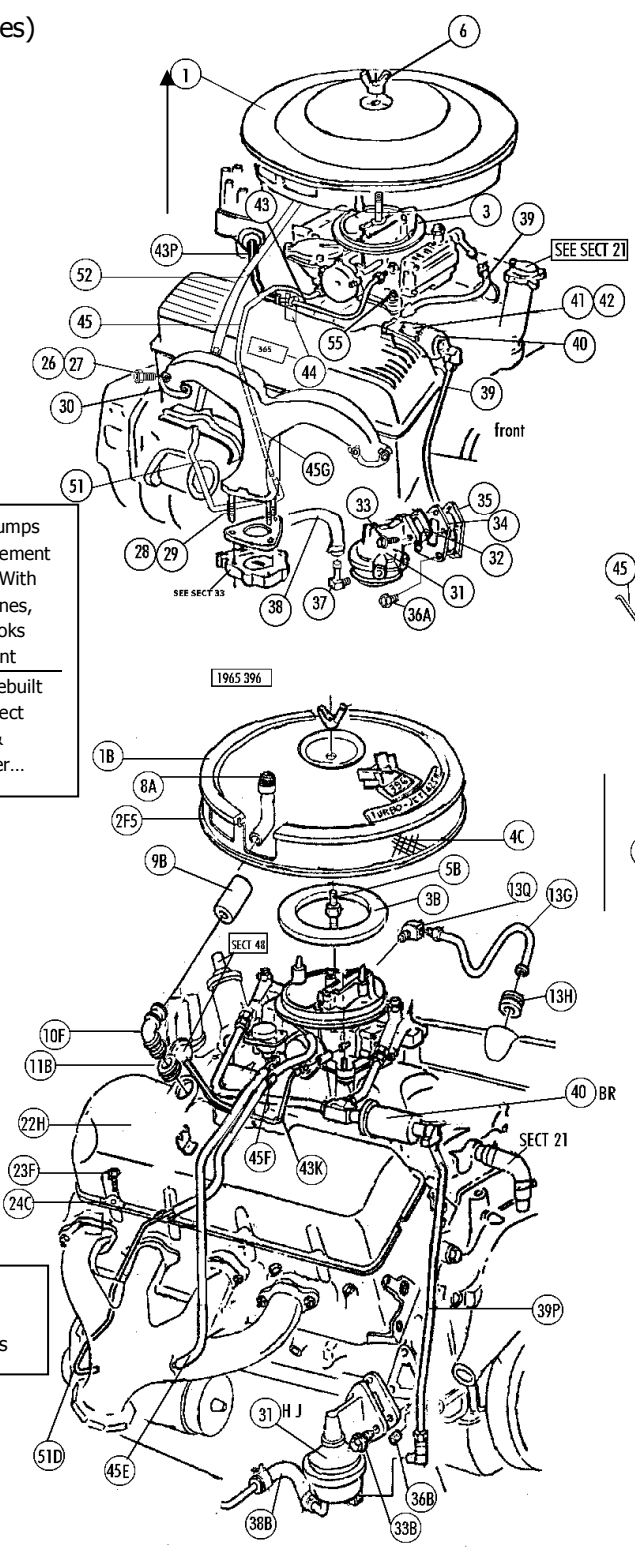
Exhaust Manifold Bolt Sets With O Headmark

22-26A	Exhaust Manifold Bolt Set (all 63)	63	1 SET	\$ 18.00	SET
22-26B	Exhaust Manifold Bolt Set (327)	64-7	1 SET	12.00	SET
22-26C	Exhaust Manifold Bolt Set (327 A/C)	64-7	1 SET	20.00	SET
22-26D	Exhaust Manifold Bolt Set (396/427)(16 Pc)	65-7	1 SET	16.00	SET
22-26E	Exhaust Manifold Bolt Set (396/427 P/S)	65-7	1 SET	20.00	SET
22-26F	Exhaust Manifold Bolt Set (427 A/C)	65-7	1 SET	24.00	SET
22-26G	Exhaust Manifold Bolt Set (427)(A/C & P/S)	65-7	1 SET	28.00	SET
22-26H	Exhaust Manifold Bolt Set (FI)	64-5	1 SET	18.00	SET
22-27	Exhaust Bolt Special Washers (327/396/427)(8 Pc)	63-7	1 SET	6.00	SET
22-28	Exhaust Manifold Lower Studs (S.S.) & Nuts (steel)	63-7	1 SET	24.00	SET
22-29	Exhaust Manifold Nut Set (6 Pc) (steel)	63-7	1 SET	6.00	SET
22-30A	Exhaust Manifold French Locks (plain)(327)(4)	63	1 SET	12.00	SET
22-30AS	Exhaust Manifold French Locks (S.S.)(327)(4)	63	1 SET	12.00	SET
22-30B	Exhaust Manifold French Locks (plain)(327)(4)	64-5	1 SET	12.00	SET
22-30BS	Exhaust Manifold French Locks (S.S.)(327)(4)	64-5	1 SET	12.00	SET
22-30C	Exhaust Manifold French Locks (plain)(327)(4)	66-7	1 SET	12.00	SET
22-30CS	Exhaust Manifold French Locks (S.S.)(327)(4)	66-7	1 SET	12.00	SET
22-30D	Exhaust Manifold French Locks(plain)(396/427)(4)	65-7	1 SET	12.00	SET
22-30DS	Exhaust Manifold French Locks (S.S.)(396/427)(4)	65-7	1 SET	12.00	SET
22-31B	Fuel Pump Rod (327/396/427)	63-7	1	18.00	
22-31C	Fuel Pump (327 All)(replacement)	63	1	30.00	
22-31D	Fuel Pump (327)(250-300hp)(replacement)	64-6	1	30.00	
22-31E	Fuel Pump (327)(350-375hp)(replacement)	64-5	1	80.00	
22-31F	Fuel Pump (327/350hp)(replacement)	66	1	80.00	
22-31G	Fuel Pump (327 All)(replacement)	67	1	25.00	
22-31H	Fuel Pump (396/427)(replacement With Adapter)	65-6	1	35.00	
22-31I	Fuel Pump (396 March-may)(40248)(rebuilt Orig)	65	1	185.00	
22-31J	Fuel Pump(396/427with Bent Tube/untill 2/66)(40366 (AC) (rebuilt Orig)	65-6	1	160.00	
22-31JL	Fuel Pump(66/427 With Block/after 1/66)(40366)AC	66L	1	160.00	
22-31JR	Fuel Pump (427 With Block- No AC)(replacement)	65-6	1	80.00	
22-31K	Fuel Pump (427- All)(40482 No AC)(replacement)	67	1	32.00	
22-31KA	Fuel Pump(427- All)(40482 With AC)(orig Rebuilt)	67	1	140.00	
22-31L	Fuel Pump (63 All+64-6 250-300hp)(orig Rebuilt)	63-6	1	120.00	
22-31M	Fuel Pump (64-6 350-375hp)(40083)(orig Rebuilt)	64-6	1	175.00	EACH
22-31N	Fuel Pump (67/327)(rebuilt Original 40433)	67	1	160.00	
22-32A	Fuel Pump Mounting Gasket (327/396/427)	63-7	1	2.25	
22-32B	Fuel Pump Rebuild Kit (63 All,64-6 250-300hp)	63-6	1	35.00	
22-32C	Fuel Pump Rebuild Kit (64-6 350-375hp)	64-6	1	35.00	
22-33A	Fuel Pump Bolts (327)(pr) (RSC Headmark)	63-7	1 PR	2.00	PAIR
22-33B	Fuel Pump Bolts (396/427)(pr) (RSC Headmark)	65-7	1 PR	2.00	PAIR
22-34	Fuel Pump Mounting Plate (327)	63-7	1	11.25	
22-35	Fuel Pump Plate Gasket (327)	63-7	1	3.50	
22-36A	Fuel Pump Plate Bolts (327)(pr) (E)	63-7	1 PR	1.50	PAIR
22-36B	Plug In Block Under Fuel Pump- 396	65	1	5.25	
22-36C	Plug In Block Under Fuel Pump- 427	66-7	1	2.50	
22-37A	Fuel Pump Tube & Elbow (63 All+64-6 250-300hp)	63-6	1	12.00	
22-37B	Fuel Pump Elbow (350-375hp)	64-7	1	8.50	
22-38A	Fuel Hose & Clamps	63	1	8.00	
22-38B	Fuel Hose & Clamps	64-7	1	3.50	
22-39A	Fuel Line 327/250hp	63-5	1 SET	22.00	SET
22-39B	Fuel Line Set 327/300hp	63-5	1 SET	27.00	SET
22-39C	Fuel Line Set 327/340hp	63	1 SET	45.00	SET
22-39D	Fuel Line Set 327/350hp & 365hp	64-5	1 SET	45.00	SET
22-39E	Fuel Line Set FI	63-5	1 SET	55.00	SET
22-39F	Fuel Line 327/300hp	66	1	30.00	
22-39G	Fuel Line 327/350hp	66	1	30.00	
22-39H	Fuel Line 427/390hp	66	1	25.00	
22-39J	Fuel Line Set With Block 427/425hp	66	1 SET	65.00	SET
22-39K	Fuel Line 327/300hp	67	1	23.00	
22-39L	Fuel Line 327/350hp	67	1	23.00	
22-39M	Fuel Line 427/390hp	67	1	25.00	
22-39N	Fuel Line Set With Blocks 427/400hp & 435hp	67	1 SET	62.00	SET
22-39P	Fuel Line Set With Block 396/425hp	65	1 SET	90.00	SET
22-39Q	Fuel Line Set With Block L88	67	1 SET	59.00	SET
22-39R	Block Only 396/425 Fuel Line	65	1	35.00	
22-39S	Block Only 427/425,427/L88 Fuel Line	66-7	1	24.00	
22-40A	Black Fuel Filter- GF-90 (no Grooves on nuts)	63-5	1	39.00	
22-40AS	Black Fuel Filter GF-90) (With Grooves on nuts)	65	1	39.00	
22-40B	Black Fuel Filter 396/425hp GF-416 (correct)	65	1	49.00	
22-40BR	Fuel Filter 396/416 Replacement With Adapters	65	1	25.00	
22-40C	Fuel Filter In Carb (Holley)	66-7	1	6.00	
22-40D	Fuel Filter (silver/Red Gf90)(early 63)no Groove	62-3E	1	39.00	
22-40E	Fuel Filter In Wcfb Carb	63-5	1	6.00	
22-40F	Fuel Filter Screen In Afb Carb	63-5	1	6.00	
22-41A	Filter Bracket With Stud & Screw (300 Hp)	63-5	1	12.00	
22-41B	Filter Bracket(chrome) W Stud & Screw (327hiper)	63-5	1	17.00	
22-42A	Bracket Stud, Nut, Washer	63-5	1	5.00	
22-42B	Bracket Screw	63-5	1	0.50	

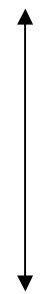
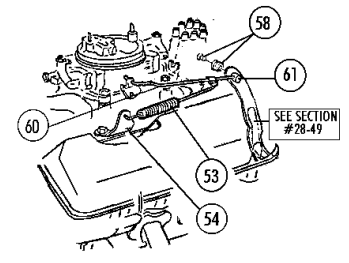
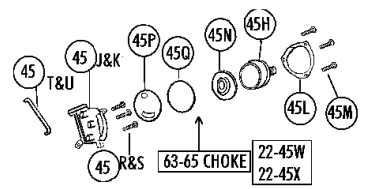
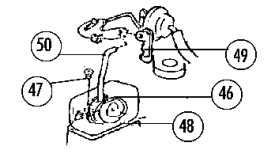
Fuel Pumps Replacement = Fits With Orig Lines, But Looks Different  
Orig Rebuilt = Correct Logo & Number...

Fuel Lines

Fuel Filters Brackets



# 22-50G CHOKE SET 66-67



Section # 22 Engine: Vacuum Lines ●Choke ● Clean Air Tubes ● Accel Springs, Rods, Linkage● Carbs Gaskets●Carburetors (4 pages)

Vacuum Advance Lines - See Section 48 For Distributor and Vacuum Advance Cans			
22-43A	Vacuum Advance Line 250-300hp (til Jan 64)	63-4	1 \$ 18.00
22-43B	Vacuum Advance Line 250-300hp (after Jan 64)	64-5	1 18.00
22-43C	Vacuum Advance Line 340 Hp (chrome)	63	1 24.00
22-43D	Vacuum Advance Line 350-365 Hp (chrome)	64-5	1 24.00
22-43E	Vacuum Advance Line 300 Hp (chrome)	66	1 22.00
22-43F	Vacuum Advance Line 350 Hp (chrome)	66	1 22.00
22-43G	Vacuum Advance Line 390, 425 Hp	66-7	1 18.00
22-43H	Vacuum Advance Line 400, 435 Hp (chrome)	67	1 24.00
22-43J	Vacuum Advance Line FI (chrome)	63	1 18.00
22-43K	Vacuum Advance Line 396/425 Hp	65	1 24.00
22-43L	Vacuum T & Hose Set (Tripower)	67	1 8.50
22-43M	Vacuum Advance Line 300 Hp	67	1 20.00
22-43N	Vacuum Advance Line 350 Hp	67	1 20.00
22-43P	Vacuum Hose (with Ribs & White Stripe)	63-7	1 2.00
22-44	Clip- Vacuum Advance Line	63-7	1 6.50
22-44B	Clip For FI Vacuum Adv Line	63	1 12.00

Choke Tubes			
22-45A	Choke Tube 250-300 Hp	63-5	1 11.50
22-45B	Choke Tube 340 Hp (chrome)	63	1 16.50
22-45C	Choke Tube 350-365 Holley (chrome)	64-5	1 17.00
22-45D	Choke Tube FI (chrome)	63-5	1 25.00
22-45E	Choke Tube & Correct Insulator (396)	65	1 30.00
22-45F	Choke/clean Air Tube Clip 396	65	1 15.00
22-45G	Choke Tube In Exhaust Manifold	63-5	1 15.00
22-45H	Choke Cover For Carter Carb (Wcfb,Afb)	63-5	1 34.00
22-45J	Choke Housing & Piston Asm (Wcfb)(used)	63-5	1 75.00 USED
22-45K	Choke Housing & Piston Asm (Afb)	63-5	1 75.00 USED
22-45L	Choke Cover Retainer (carter Wcfb & Afb)	63-5	1 7.50
22-45M	Choke Cover Screws (carter Wcfb & Afb)(3)	63-5	1 SET 1.50 SET
22-45N	Choke Coil & Zinc Plate (carter Wcfb & Afb)	63-5	1 50.00
22-45P	Choke Slotted Plate (carter Wcfb & Afb)	63-5	1 10.00
22-45Q	Choke Cover Gasket (carter Wcfb & Afb)	63-5	1 2.50
22-45R	Choke Housing Mounting Screws (Wcfb)(3)	63-5	1 SET 1.50 SET
22-45S	Choke Housing Mounting Screws (Afb)(3)	63-5	1 SET 1.50 SET
22-45T	Choke Rod & Clip (Wcfb)	63-5	1 7.50
22-45U	Choke Rod & Clips (Afb)	63-5	1 7.50
22-45W	Choke Assembly (carter Wcfb) (j,h,l,m,n,p,q,r,t)	63-5	1 160.00
22-45X	Choke Assembly (carter Afb)(k,h,j,m,s,n,p,q,u)	63-5	1 160.00
22-46A	Choke Thermostat (64-5/350-365hp)(65/396) (includes Coil, Black Cover & Gasket)	64-5	1 25.00
22-46B	Retainers & Screws For Choke (2818 64-5 350-365)	64-5	1 SET 9.00 SET
22-46C	Screws For 396 Choke Cover (3)	65	1 SE 1.50 SET
22-46D	Choke Base (housing)(2818,3124)	64-5	1 70.00
22-46	Choke Coil	66-7	1 21.00
22-47	Choke Coil Screw	66-7	1 0.50
22-48	Choke Coil Cover	66-7	1 7.25
22-49	Choke Rod Clip	63-7	1 2.00
22-50A	Choke Rod 300 Hp	66-7	1 6.50
22-50B	Choke Rod 350 Hp	66-7	1 6.50
22-50C	Choke Rod 390 Hp	66	1 6.50
22-50D	Choke Rod 425 Hp	66	1 6.50
22-50E	Choke Rod 390 Hp	67	1 6.50
22-50F	Choke Rod Tripower	67	1 6.50
22-50H	Choke Rod Washer (66/425 + L88)(N.O.S.)	66-7	1 0.50
22-50G	Choke Set(46,47,48,49,50)(state Year & Engine)	66-7	1 SET 32.00 SET

Clean Air Tubes			
22-51A	Clean Air Tube With Hose	63	1 27.50
22-51B	Clean Air Tube With Hose	64-5	1 27.50
22-51C	Clean Air ube FI With Hose	63-5	1 27.50
22-51D	Clean Air Tube 396 With Hose	65	1 25.00
22-51E	Stud & Nut For Clean Air Tube 63 Or 63-5 FI	63-5	1 5.00
22-52A	Clean Air Hose (327)	63-5	1 2.00
22-52B	Clean Air Hose (396)	65	1 2.50

Accelerator, Carb Return Springs, Brackets ...			
22-53A	Accel Return Spring 327	63-7	1 6.00
22-53B	Accel Return Spring 340 Hp	63	1 7.00
22-53C	Accel Return Spring All Auto (pr)	67	1 PR 11.00 PAIR
22-53D	Accel Return Spring 396/427	65-7	1 6.00
22-53E	Accelerator Return Spring- FI	63-5	1 7.00
22-54A	Accel Return Spring Bracket 327	63-7	1 10.00
22-54B	Accel Spring Bracket 396/427	65-7	1 10.00
22-54C	Accel Spring Bracket (fi)	63-5	1 15.00
22-55A	Carb Stud & Nut Set (exc 63-5 300hp)	63-7	1 SET 4.00 SET
22-55B	Carb Stud, Nut & Bolt Set (3x2)	67	1 SET 12.00 SET
22-55C	Carb Long Stud & Nut Set (300 Hp)	63-5	1 SET 4.00 SET
22-58	Accel Rod Bushing & Grommet Set (correct)(2 Ea)	63-7	1 SET 3.00 SET
22-60A	Accelerator Rod- 327	63-5	1 12.00
22-60B	Accelerator Rod- 396	65	1 25.00
22-60C	Accelerator Rod- 327	66-7	1 12.00

Sec-Part	Name	Year	#/Car	Price
22-60D	Accelerator Rod- 427/390hp (66 All,67 4 Spd)	66-7	1	\$ 25.00
22-60E	Accelerator Rod- Tripower (4 Spd)(gold Color)	67	1	25.00
22-60F	Accelerator Rod- 427/425hp	66	1	25.00
22-60G	Accelerator Rod- FI	63-5	1	15.00
22-60H	Accelerator Rod- 427/390 (auto)	67	1	30.00
22-60J	Accelerator Rod- 427/400 (auto)(gold Color)	67	1	30.00
22-61	Accel Swivel + Cotter Pins (1 + 2)	63-7	1 SET	6.00 SET
22-62	Carb Linkage- Tripower (gold Color)	67	1	40.00
22-63A	Carb Tag (3460s) 300 Hp Auto	63	1	15.00
22-63B	Carb Tag (3461s) 300-340 Hp 4spd	63	1	N/A
22-63C	Carb Tag (3721s) 300 Hp 4spd	64-5	1	N/A
22-64	Distributor Holddown (see 48-36) (see section 48 for distributor)			
22-65A	Spark Plugs (ac43r)(replacement For Ac44)(8 Pc)	63-7	1 SET	18.00 SET
22-65B	Spark Plugs 327 (city)(ac45r)(8 Pc)	63-7	1 SET	24.00 SET
22-65C	Spark Plugs 396/427 (c43n)(8 Pc)(N.O.S.)	65-7	1 SET	24.00 SET
22-65D	Spark Plugs 327 (ac44)(8 Pc)	63-7	1 SET	N/A
22-65E	Spark Plugs(ac44r)(r=resistor For Radio)	63-7	1 SET	N/A
22-65F	Spark Plugs 396/427 (43n)(8 Pc)	65-7	1 SET	N/A
22-65Z	Spark Plug Washers (8)	63-7	1 SET	4.00 SET

Carburetor Base Gasket , Insulator, Baffle			
22-66A	Carb Base Gasket (Wcfb)(250hp)	63-5	1 5.00
22-66B	Carb Base Gasket (300hp/Afb)	63-5	1 5.00
22-66C	Carb Base Gasket (327/300,427/390hp)(use Baffle)	66-7	1 6.00
22-66D	Carb Base Gasket (327/350-365)	64-7	1 5.00
22-66E	Carb Base Gasket (Holley 3x2)(3 Pc)	67	1 SET 15.00 SET
22-66F	Carb Base Gasket (396-427/425-450hp, L88)	65-7	1 5.00
22-66G	Carb Base Gasket (340/Afb)	63	1 6.00
22-67	Carb Insulator (Afb 300hp)(over Gasket)	63-5	1 26.00
22-68A	Carb Metal Heat Baffle (S.S.)(Afb 300hp)	63-5	1 7.00
22-68B	Carb Metal Heat Baffle (300+390hp)(on Gasket)	66-7	1 14.00
22-69A	Valve Push Rod (327)	63-7	16 17.50 EACH
22-69B	Valve Push Rod (396/427/intake-short)	65-7	8 17.50 EACH
22-69C	Valve Push Rod (396/427/exhaust/long)	65-7	8 16.00 EACH
22-70A	Rocker Arm, Ball, & Nut (327)	63-7	16 29.00 EACH
22-70B	Rocker Ball (327)	63-7	16 5.00 EACH
22-70C	Rocker Nut (327)	63-7	16 3.00 EACH
22-70D	Rocker Arm, Ball, & Nut (396/427)	65-7	16 24.00 EACH
22-70F	Rocker Nut (396/427)	65-7	16 2.00 EACH
22-70G	Valve Spring & Cap Kit (327)	63-6	16 16.00 EACH
22-70H	Valve Spring & Cap Kit (327)	67	16 16.00 EACH
22-70J	Valve Spring & Cap Kit (396/427)	65-7	16 20.00 EACH
22-70K	Valve Stem Retainer (327)(1 Pr)	63-7	16 PR 2.00 PAIR
22-70L	Valve Stem Retainer (396/427)(1 Pr)	65-7	16 PR 1.50 PAIR

N.O.S. Holley Carbs; No Warranty -14 Days To Inspect) New In Box with Current Dates			
22-71	Carburetor- Carter	63-5	1 N/A
22-71C	Carburetor- Holley(350-365hp)(2818) *	64-5	1 575.00
*Must Modify Vac Line By Cutting Flare & Use Hose			
22-71D	Carburetor- Holley (300,350hp)(3367)(NOS)	66	1 575.00
22-71E	Carburetor- Holley (300,350hp)(3810)(NOS)	67	1 575.00
22-71F	Carburetor- Holley (outer 3x2)(3659) (NOS)	67	2 395.00 EACH
22-71G	Carburetor- Holley (3x2 Center)(3660)(NOS)	67	1 525.00
22-71H	Carburetor- Holley (390hp)(3811)(NOS)	67	1 575.00
22-71J	Carburetor- Holley (l-88)(3418)	67	1 N/A
22-71K	Carburetor- Holley (425hp)(3247)(NOS)	66	1 575.00
22-71M	Carburetor- Holley (396)(3124)	65	1 N/A
22-71N	Carburetor- Holley (427/390)(3370)(NOS)	66	1 575.00
22-72A	Carb Rebuild Kit (Wcfb)(250hp)	63-5	1 35.00
22-72B	Carb Rebuild Kit (Afb)(300-340hp)	63-5	1 48.00
22-72C	Carb Rebuild Kit (Tripower Carb)	67	3 30.00 EACH
22-72D	Fuel Inlet Fitting- Holley Carb (5/16"line) (all 327;65-6 427/425,430,450hp)	64-7	1 10.00
22-72E	Fuel Inlet Fitting (Afb)	63-5	1 10.00
22-72F	Fuel Inlet Fitting- 427 Holley Carb (3/8"line) (66-7 390,400,435hp)	66-7	1-3 15.00 EACH
22-72G	Holley Carb Rebuild Kit (64-5 350-365hp) (2818)	64-5	1 37.00
22-72H	Holley Carb Rebuild Kit (66-7 390,67 300-350hp)	66-7	1 30.00
22-72I	Holley Carb Rebuild Kit (65-6 425 Hp)	65-6	1 35.00
22-72J	Holley Carb Rebuild Kit (66 327/300-350hp)	66	1 35.00
22-72K	Holley Carb Rebuild Kit (L88)	67	1 35.00
22-72L	Fuel Inlet Fitting & Retainer (327/350-365hp)	64-5	1 SET 12.00 SET
22-72M	Fuel Inlet Fitting (Wcfb)	63-5	1 15.00
22-73A	3x2 Secondary Carb Diaphragm Kit(dia,cover,base, Spring,link,gaskets,retainer,screws)	67-9	2 89.00 EACH
22-73B	3x2 Secondary Carb Diaphragm	67-9	2 30.00 EACH
22-74A	Holley Float Bowl Correct Slotted Screws (4+4)	64-7	1 SET 16.00 SET
22-74B	Holley 3x2 Carb Float Bowl Slotted screws (8+4)	67	1 SET 24.00 SET

See photos online [www.licorvette.com](http://www.licorvette.com) or Call with part#s to order 1-800-466-6367