

Section 21 Engine: Radiator Hoses • Therm Housings • Oil Fill Tubes • Water Pumps • Intake Bolts, Gaskets, Vacuum Fittings, Starter Braces

Sec-Part#	Name	Year	#Need /Car	Price	Inc
>Radiator Hoses: (Blue Stripe= With # And Blue Stripe) (See Section 25 For Clamp SETS)					
21-01C	Upper Radiator Hose (396 Early) Before #16000	65	1	\$ 35.00	
21-01D	Upper Radiator Hose (396 Late Or L88) after #16000	65+7	1	39.00	
21-01H	Upper Rad Hose With Blue Stripe (340-375HP)	63-4	1	33.00	
21-01J	Upper Rad Hose With Blue Stripe (327/350-375HP)	65	1	33.00	
21-01K	Upper Rad Hose With Blue Stripe (427)	66-7	1	35.00	
21-01L	Upper Rad Hose With Blue Stripe (250-300 HP)	63-5	1	35.00	
21-01M	Upper Rad Hose With Blue Stripe (300 HP)	66-7	1	35.00	
21-01N	Upper Rad Hose With Blue Stripe (327/350HP)	66-7	1	35.00	
21-01P	Upper Rad Hose With Blue Stripe (250-300HP+A/C)	63-5	1	35.00	

> Upper and lower Rad Hose clamps – with logos and date: (give Date Or Yr/serial # (1st And 3rd Quarter)					
21-02	Upper Radiator Hose Clamps (pr)327/396/427(dated)	63-7	1 PR	17.00	PAIR
21-03A	Lower Radiator Hose (327)	63-5	1	39.00	
21-03B	Lower Radiator Hose (396 Or L88)	65+7	1	36.00	
21-03C	Lower Radiator Hose (327)	66-7	1	35.00	
21-03D	Lower Radiator Hose (427)	66-7	1	35.00	
21-04A	Lower Radiator Hose Clamps (327/427)(dated)	63-7	1 PR	17.00	PAIR
21-04B	Lower Radiator Hose Clamps (396)(dated)	65	1 PR	17.00	PAIR

Or see section 25 for full clamp sets					
Thermostats, Housings, Bolts					
21-05B	Thermostat Housing/water Outlet (327/340-375HP)	63-5	1	60.00	
21-05G	Thermo Housing Spacer(396 & L88 & 66-7/427 K19)	65&7	1	25.00	
21-05H	Therm Housing (66-7 300HP,all 427 Exc L88)alum	66-7	1	56.00	
21-05J	Therm Housing/water Outlet(correct) (#369 Cast)	63-7	1	57.00	
	63-5 327/250-300HP,65 396,66-67 350HP,L88	63-7	1		
21-06	Thermostat Gasket	63-7	1	2.00	
21-07A	Thermostat (s.s.)(180 Degree)	63-7	1	8.00	
21-07B	Thermostat (s.s.)(195 Degree)	63-7	1	8.00	
21-07C	Thermostat (s.s.)(160 Degree)	63-7	1	8.00	
21-08A	Therm. Housing Bolt Set (TR)(for 21-05J)	63-7	1 SET	4.00	SET
	63-5 327/250-300HP,65 396,66-67 350 HP,L88				
21-08B	Therm. Housing Stud Set (for 63-65 Hiper #21-05B)	63-5	1 SET	4.50	SET
21-08C	Therm. Housing Bolt Set (TR)(for 21-5H) (66-7 300HP,all 427 Except L88)	66-7	1 SET	4.00	SET
21-08D	Therm Housing Bolt Set (396/L88)(5g) (TR Hdmk)	65&7	1 SET	7.00	SET
21-08DR	Therm Housing Bolt Set (396/L88)(5g)replacement	65&7	1 SET	4.00	SET
21-08E	Therm Housing Bolts (427 K19 With Spacer) (TR)	66-7	1 SET	10.00	SET

Bypass – fittings, hoses, intake , water pump fittings:					
21-09A	Bypass Fitting 327/427 (in Intake)(threaded)	63-7	1	7.50	
21-09B	Bypass Fitting 396/427 (unthreaded)(water Pump)	65-7	2	5.00	EACH
21-10A	Bypass Hose 327 Hiper	63-7	1	9.00	
21-10B	Bypass Hose 396/427	65-7	1	9.00	
21-11A	Clamps For 327 Bypass Hose (pr)	63-7	1 PR	2.50	PAIR
21-11B	Clamps For 396 & 427 Bypass Hose (pr)	65-7	1 PR	6.00	PAIR
21-12	87 Degree Bypass Fitting 327 Hiper	63-7	1	20.00	
21-13A	Intake Heater Hose Fitting (short)	63-7	1	7.50	
21-13B	Intake & Water Pump Heater Delete Plug	63-7	1or2	2.50	EACH
21-14A	Water Pump Heater Hose Fitting (all Non A/C)	63-7	1	9.00	
21-14B	Water Pump Heater Hose Fitting (A/C 327)	63-7	1	10.00	
21-14C	Water Pump Heater Hose Fitting (A/C 427)	66-7	1	4.50	
21-15A	Starter Brace (327)	63	1	12.00	
21-15B	Starter Brace (427)(except L88)	66-7	1	10.00	
21-15C	Starter Brace (396 Or L88)	65+7	1	15.00	
21-15E	Starter Brace (327)	64-7	1	12.00	
21-16	Solenoid Shield 327	64-7	1	7.50	
21-17	Solenoid Shield Bolt	64-7	1	0.25	
21-18A	Starter Brace Bolt (1 Hdmk)	63-7	1	0.75	
21-18B	Starter Brace Nut	63-7	1	0.25	
21-19	Starter Bolts (327/396/L88 All)(pr)	63-7	1 PR	10.00	PAIR
21-20	Starter Bolts 427 (pr)	66-7	1 PR	8.00	PAIR
21-21	Starter Solenoid Terminal Nuts & Lw (set)	63-7	1 SET	1.00	SET

Oil Fill Tubes and Caps					
21-22A	Oil Filler Tube 250-300 HP (black)	63	1	25.00	
21-22B	Oil Filler Tube 340HP (chrome)	63	1	28.00	
21-22C	Oil Filler Tube 250-300 HP (black)	64-5	1	23.00	
21-22D	Oil Filler Tube 350-375HP (chrome)	64-5	1	29.00	
21-22E	Oil Filler Tube 300 HP (black)	66-7	1	35.00	
21-22F	Oil Filler Tube 350HP (chrome)	66-7	1	30.00	
21-22G	Oil Filler Tube FI (chrome)	63	1	36.00	
21-23A	Oil Filler Cap Chrome (all 327)	63-5	1	8.00	
21-23B	Oil Filler Cap 327 Black (300 HP)	66-7	1	10.50	
21-23C	Oil Filler Cap Chrome (350 HP)	66-7	1	8.00	
21-23D	Oil Filler Cap 396/427(replacement-painted Black)	65-7	1	10.00	
21-23E	Oil Filler Cap (unplated)(250-300HP)(NOS)	63E	1	5.00	
21-23F	Oil Filler Cap 396/427 (Green/black with S +SMC Logos)	65-7	1	29.00	
21-23G	Cork Gasket (with Hole) For Oil Filler Cap	63L-5	1	2.00	
21-23H	Oil Filler Cap (chrome)(L89)	67	1	15.00	

SEE DRAWING /DIAGRAM ABOVE (Photos online)

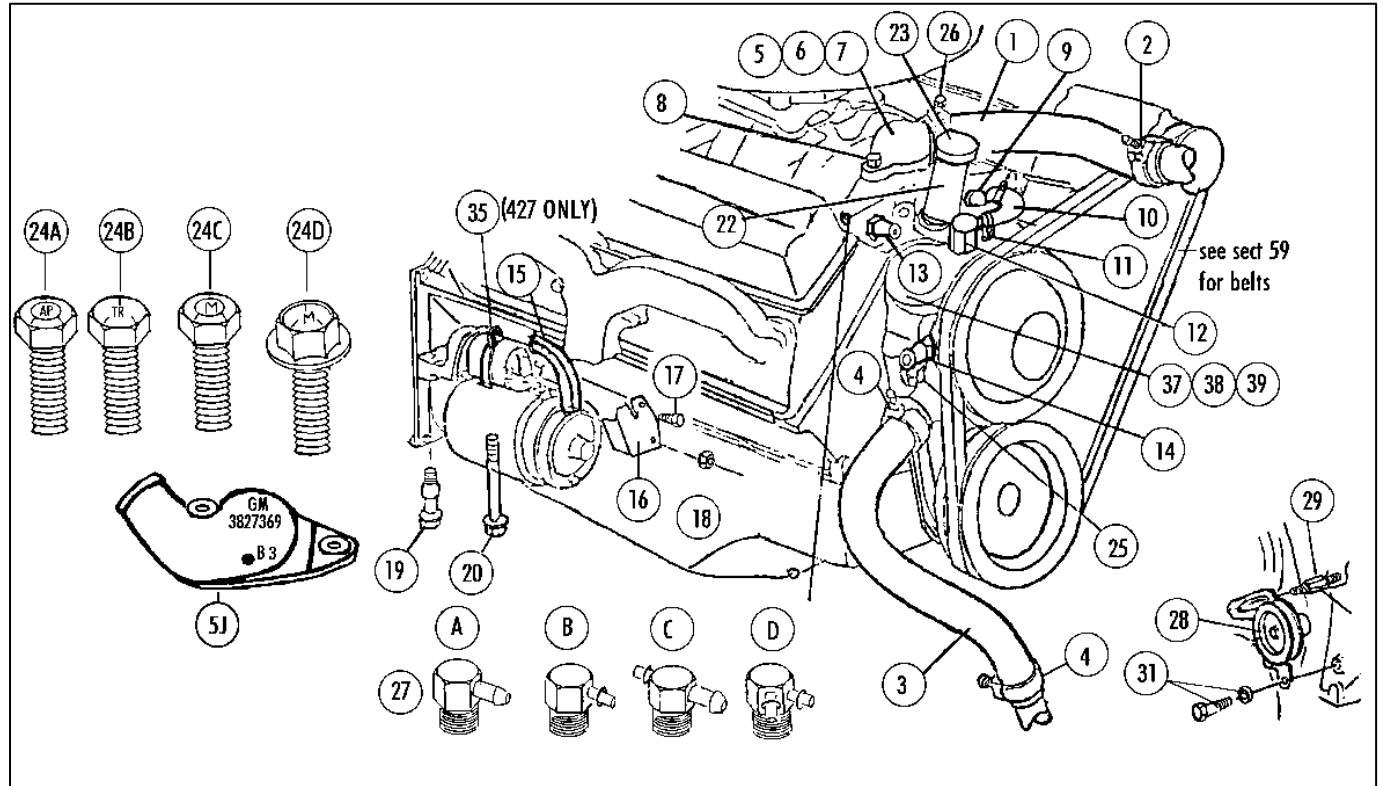
Sec-Part#	Name	Year	#Need /Car	Price	Inc
21-36 Intake Manifold Bolts with Markings					
21-24A	Intake Manifold Bolts (AP Hdmk)(12) (zinc)	63	1 SET	13.00	SET
21-24B	Intake Manifold Bolts (TR Hdmk)(12) (black)	64	1 SET	13.00	SET
21-24C	Intake Manifold Bolts All 327(M Hdmk)(black)(12)	65-7	1 SET	13.00	SET
21-24D	Intake Manifold Bolts 396/427(M Hdmk)(zinc)16	65-7	1 SET	18.00	SET
21-25A	Water Pump Bolt Set (327)(TR Hdmk)(4)	63-7	1 SET	12.00	SET
21-25B	Water Pump Bolt Set (327/A/C)(TR,O Hdmk)(4 Pc)	64-7	1 SET	12.00	SET
21-25C	Water Pump Bolt And Stud Set (396/427)(4 Pc)	65-7	1 SET	12.50	SET
21-26A	Water Pump Gaskets 327 (1 Pr)	63-7	1 PR	2.25	PAIR
21-26B	Water Pump Gasket 396/427 (1 Pr)	65-7	1 PR	2.25	PAIR
21-27A	Intake Manifold Vacuum Fitting- PB Only	64-7	1	12.50	
21-27B	Manifold Vacuum Fitting- A/C Or Automatic	65-7	1	12.50	
21-27C	Fitting- PB And A/C Or PB And Auto (exc 3x2)	64L-7	1	12.50	
21-27D	Manifold Vacuum Fitting- A/C And Automatic	64L-7	1	12.50	
21-27E	Fitting- A/C And Automatic And PB (exc 3x2)	64L-7	1	16.50	
21-27F	Plug- Vacuum Hole On Intake	64-7	1	2.75	
21-27G	Vacuum Fitting- PB & A/C Or PB & Auto (3x2)	67	1	20.50	
21-27H	Vacuum Fitting- PB & A/C & Auto (3x2)	67	1	20.50	
21-27J	FI Fitting- 63-65 PB Fitting	63-5	1	20.50	
21-27K	FI Plenum Plug- No Power Brakes	63-5	1	10.50	
21-27L	Fitting- PB And A/C (4 Spd & Auto)(4 Pc)	64E	1	35.00	
21-27M	Intake Fitting- 64 Late Automatic (2 Pc)	64L	1	24.00	
21-27N	Intake Fitting- Air Conditioned (2 Pc)	64	1	22.00	
21-27P	Intake Fitting- Power Brakes (use 21-27a)	64E	1		N/A
21-27Q	Fi Fitting- Vacuum Advance Fitting	64-5	1	20.00	
21-27R	Intake Fitting- A/C And Auto (3x2)	67	1	20.00	
21-28A	Idler Pulley 327/340-360 HP (Zinc Pulley)	63E	1	115.00	
21-28B	Idler Pulley 327/340,360-375HP (black Pulley)	63-5	1	115.00	
21-29	Idler Pulley Stud & Nut (327)	63-5	1	7.50	
21-30	Bearing For Idler Pulley 327	63-5	1	31.00	
21-31	Idler Pulley Mounting Bolt & Washer	63-5	1	1.50	
21-32A	Power Brake Hose And Clips (with Swan Logo)	63	1	8.25	
21-32B	Power Brake Hose And Clips (swan Logo)	64-7	1	8.25	
21-32C	Power Brake Hose And Clips (3x2)(swan Logo)	67	1	8.25	
21-35	Wire Clip On Starter Solenoid 427	66-7	1	15.00	

21-36 Intake Gaskets Have The Correct Original Shape – (no logos)					
21-36A	Intake Manifold Gasket Set (327 No FI)(5 Pc)	63-7	1 SET	30.00	SET
21-36B	Intake Manifold Gasket Set (396/427)(425-435HP)	65-7	1 SET	28.00	SET
21-36C	Intake Manifold Gasket Set (427)(390-400HP)	66-7	1 SET	28.00	SET
21-36D	Head Gaskets (327)(pr)	63-7	1 PR	36.00	PAIR
21-36E	Head Gaskets (396/427)(pr)	65-7	1 PR	45.00	PAIR
21-36F	Intake Gaskets- 327 With FI (correct Shape)	63-5	1 SET	35.00	SET
21-37	Water Pump- Rebuilt Original (327/250-300HP)	63-7	1	180.00	EACH
21-38	Water Pump (327/340-375 HP)(with Bypass Hole) Rebuilt Original	63-7	1		N/A
21-38A	Water Pump (63 Early)(327/340-360)(609) Rebuilt Original	63E	1		N/A
21-39	Water Pump- Rebuilt Original (396/427)	65-7	1		N/A
21-39B	Water Pump Rebuild Kit (327)	63-7	1	30.00	
21-39C	Water Pump Rebuild Kit (396)	65	1	40.00	
21-39D	Water Pump Rebuild Kit (427)	66-7	1	40.00	
21-39F	Water Pump Flat Back (396 Only) (not In Kit)	65	1	15.00	
21-39H	Hex Screws For Water Pump Back (327/427)(6 Pc)	63-7	1 SET	4.50	SET
21-39J	Slotted Screws For Water Pump Back (65/396)(6)	65	1 SET	4.50	SET
21-39K	Water Pump Shaft Seal 327 (in Kit)	63-7	1	8.50	
21-39L	Water Pump Shaft Seal 396/427 (in Kit)	65-7	1	8.50	
21-40A	Head Bolts (327)(16 Short,4 Medium,14 Long) NOT Correct Marking	63-7	1 SET	40.00	SET
21-40B	Head Bolts- (396/427)(8 Short,24 Long) (M+ Hdmk)	65-7	1 SET	75.00	SET
21-41A	Freeze-out Plugs (1-5/8"cup)(327)	63-7	8	3.50	EACH
21-41B	Freeze-out Plugs (1-3/4"cup)(396/427)	65-7	8	3.50	EACH
	Freeze Plug Like Original- Not Stamped With Size				
21-42	Small Square Head Plug In Front Of Block	63-7	1	2.00	
21-43A	5/16" Dowel Pin For 327 Head To Block (4)	65-7	1 SET	3.00	SET
21-43B	5/8" Hollow Pin For Head To Block(396/427)(4 Pc)	65-7	1 SET	3.00	SET
21-44	Drain Plugs (hex) On Lower Side Of Block (pr)	63-7	1 PR	5.00	PAIR
21-45A	Plug In Side Of Block- Hex Hole (396/427)(4)	65-7	1 SET	8.00	SET
21-45B	Cam Plug In Rear Of Block- Hex Hole	63-7	2-3	2.00	EACH
21-46	Pin In Rear Of Block For Bell Housing	63-7	1 PR	9.75	PAIR

More engine see Section 22 - Air Cleaners, Valve covers , pcv, Exhaust, Carbs, fuel lines ...

SECTION 21

Section 21 Engine: Radiator
Hoses●Therm Housing ●Oil Fill
●Water Pumps●Intake Bolts,
Gaskets, Vacuum Fittings, Starter



Tubes
Braces