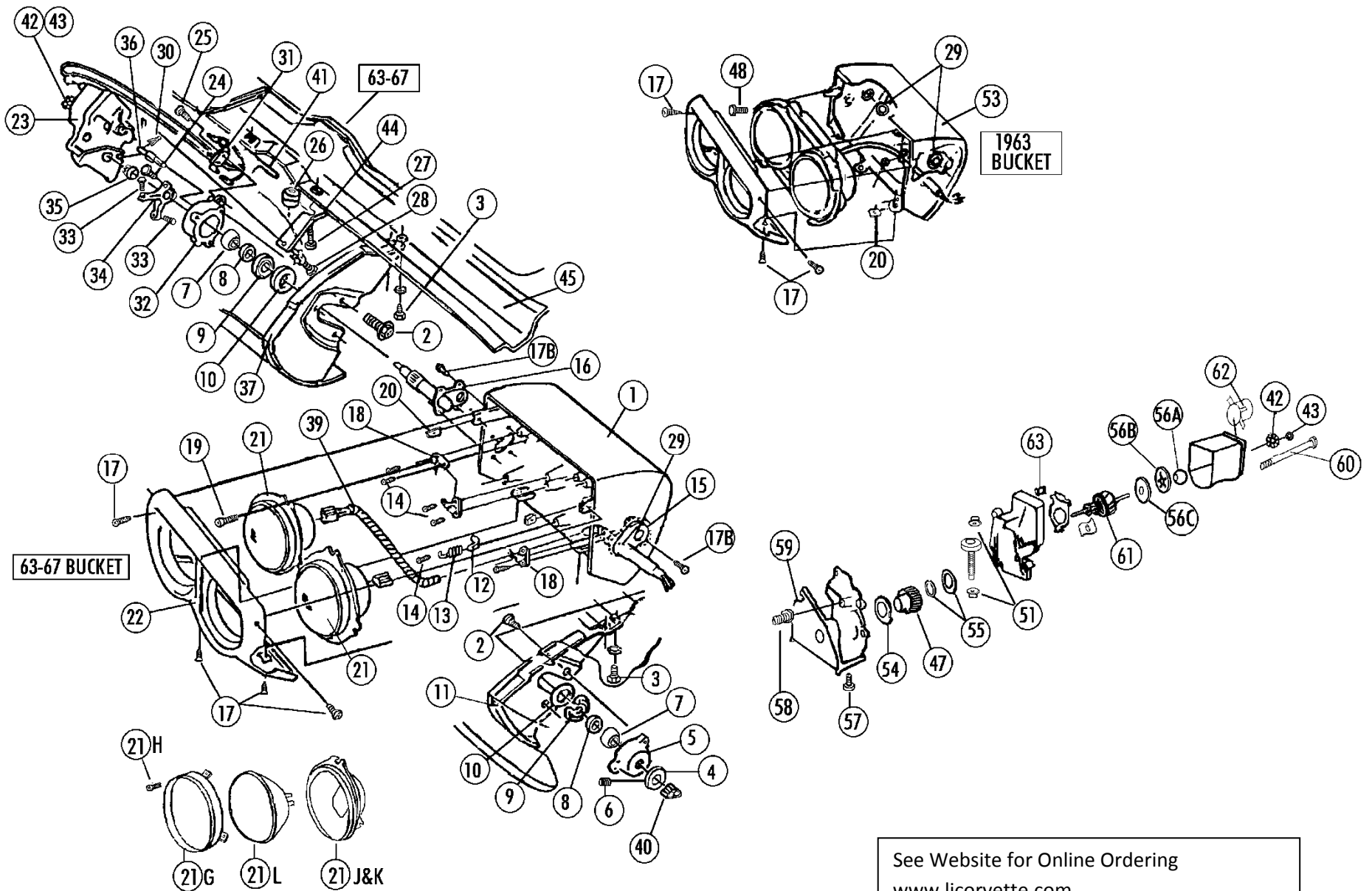


Section 04 Headlights



See Website for Online Ordering
www.licorvette.com
Photos and updated pricing.

Section 04 Headlights

Sec-Part#	Name	Year	#NEED/Car	Price	Inc
04-01A	Housing LH	64-7	1	\$ 220.00	
04-01B	Housing RH	64-7	1	220.00	
04-02	Pod Bolts (b & H Headmark) (12)	63-7	1 SET	12.50	SET
04-03	End Assembly Mounting Bolts (e) (8 Pc)	63-7	1 SET	6.00	SET
04-04	Spacer (end Collar)(includes Set Screw #4-06)	63-7	2	4.50	EACH
04-05	Outer Support	63-7	2	45.00	EACH
04-06	Set Screws (2 Pc)	63-7	1 PR	0.50	PAIR
04-07A	Bearing-brass & Steel- Gm Original Style	63-7	4	6.00	EACH
04-07B	Bearing-nylon Replacement	63-7	4	7.75	EACH
04-52▶	Set Of Felts,washers And Retainers(8,9,10)(4 Ea)	63-7	1 SET	17.00	SET
04-08	Felt Seals (4 Pc)	63-7	1 SET	4.00	SET
04-09	Rubber Retainer	63-7	4	2.00	EACH
04-10	Metal Washer	63-7	4	2.00	EACH
04-11A	End Assembly, Outer LH	63-7	1	42.00	
04-11B	End Assembly, Outer RH	63-7	1	42.00	
04-12	Insulators- Spring Retainers(4 Pc)	63-7	1 SET	5.00	SET
04-13	Headlight Bulb Springs (4 Pc)	63-7	1 SET	10.00	SET
04-14	Screws (20 Pc) (for Adj Bracket#18 & Insul #12)	64-7	1 SET	10.00	SET
04-15A	Pivot Outer LH	64-7	1	40.00	
04-15B	Pivot Outer RH	64-7	1	40.00	
04-16A	Pivot Inner LH	64-7	1	65.00	
04-16B	Pivot Inner RH	64-7	1	65.00	
04-17B	Screws-headlight Pivots (16 Pc) (zinc)	64-7	1 SET	8.00	SET
04-17C	Screw Set-hdlt Bezel (4 Short,4 Long)(<may)(blk)	63E	1 SET	3.00	SET
04-17D	Screw Set-hdlt Bezel (8 Pc)(after April63)blk	63L	1 SET	2.00	SET
04-17E	Screw Set Headlight Bezel (8 Pc) (zinc)	64-7	1 SET	3.00	SET
04-18▶	Plastic Adjuster Brackets & Screws(#19) (8+8)	63-7	1 SET	13.00	SET
04-19	Adjuster Screws (correct 1") (for 18)(8 Pc)	63-7	1 SET	5.00	SET
04-19B	Headlight Bulb Mounting Set (12,13,14,18)	64-7	1 SET	30.00	SET
04-20	J-nuts (4 Pc) (for 63 Order 2 Sets)	63-7	1 SET	1.75	SET
04-21A	Lamp Asm LH Outer (not T-3)	63	1	36.00	
04-21B	Lamp Asm RH Outer (not T-3)	63	1	36.00	
04-21C	Lamp Asm LH Inner (not T-3)	63	1	36.00	
04-21D	Lamp Asm RH Inner (not T-3)	63	1	36.00	
04-21E	Lamp Asm LH & RH Outer (dual)(not T-3)	64-7	2	36.00	EACH
04-21F	Lamp Asm LH & RH Inner (high)(not T-3)	64-7	2	36.00	EACH
04-21G	HL Bulb Retaining Ring	63-7	4	10.00	EACH
04-21H	HL Retaining Ring Screw (12 Pc)	63-7	SET	8.00	SET
04-21J	HL Bulb Rear Housing (inner/high)	64-7	2	17.00	EACH
04-21K	HL Bulb Rear Housing (outer/dual)	64-7	2	17.00	EACH
04-21L	T3 Bulb Set (2 High & 2 High-low)	60-7	1 SET	149.00	SET
04-21N▶	Lamp Asm (4 T3 Bulbs With Housing,ring,screw) (includes 2-04-21J, 2-04-21K, 1-04-21L, 4-04-21G, 1-04-21H)	64-7	1 SET	250.00	SET
04-22A	Headlight Bezel LH	63-7	1	125.00	
04-22B	Headlight Bezel RH	63-7	1	125.00	
04-23C	Headlight Motor- LH (imported)	63-7	1	325.00	
04-23D	Headlight Motor- RH (imported)	63-7	1	325.00	
04-24	Y Stop Mounting Bolts (2 Pc)	63-7	1 SET	1.00	SET
04-25	Bolts For Warning Switch (set Of 4)	63-7	1 SET	2.00	SET

Sec-Part#	Name	Year	#NEED/Car	Price	Inc
04-50▶	HL Motor Mount Set (2 Ea #26,27,28,30,44)	63-7	1 SET	\$ 15.00	SET
04-26	Grommet Assembly	63-7	2	5.00	EACH
04-27	Bolts For HL Grommet Mounting (2 Pc) (S Hdmk)	63-7	1 SET	1.50	SET
04-28	Motor Bracket Ground Bolt & Lw (2 Ea) (P)	63-7	1 SET	1.00	SET
04-29	Bucket Hole Plugs (black) (4 Pc)	63-7	1 SET	1.75	SET
04-30	Motor Retainer Clips (for Stud #36)(2 Pc)	63-7	1 SET	1.00	SET
04-31	Headlight Warning Switch("lights")"limit Switch"	63-7	2	10.00	EACH
04-32A	Support Inner LH	63-7	1	45.00	
04-32B	Support Inner RH	63-7	1	45.00	
04-33	Y Stop Bolts (4)	63-7	1 SET	4.00	SET
04-34	Headlight Y Stop (aluminum)	63-7	2	30.00	EACH
04-35	Motor Bushings (2 Pc) (white)	63-7	1 SET	2.00	SET
04-36	Head Light Motor Stud	63-7	2	5.00	EACH
04-37A	End Assembly, Inner LH	63-7	1	42.00	
04-37B	End Assembly, Inner RH	63-7	1	42.00	
04-39	Wire Assembly Ext >>see Sect 43-02J Or 43-02K				
04-40A	Headlight Extension Plugs (on Bucket)(2 Pc)	63-7	1 SET	2.00	SET
04-40B	Headlight Extension Plugs(on Main Harness)(2 Pc)	63-7	1 SET	2.00	SET
04-41	Wire Harnesses (see Sect 43-02...)				
04-42	Headlight Motor Wheel (1)	63-7	2	6.00	EACH
04-43	Retainers For HL Motor Wheel (2 Pc)	63-7	1 SET	1.00	SET
04-44	Motor Bracket	63-7	2	3.25	EACH
04-45	Header Bar With Bonding Strip (see 54-05d)				
04-46	Cable Clips On Header Bar (4 Pc)	63-7	1 SET	20.00	SET
04-47A	Headlight Motor Drive Gear (original GM)	63-7	2	50.00	EACH
04-47R	Headlight Drive Gear (reproduction)	63-7	2	30.00	EACH
04-48	Headlight Pod Bolt (8 Pc)	63E	1 SET	4.00	SET
04-49	Headlight Motor Plug (2)	63-7	1 PR	5.00	PAIR
04-50▶	HL Motor Mount Set (2 Ea #26,27,28,30,44)	63-7	1 SET	15.00	SET
04-51	HL Motor Gear "top Hat" Bushings (1 Pr)	63-7	2 PR	5.00	PAIR
04-52▶	Set Of Felts,washers And Retainers(8,9,10)(4 Ea)	63-7	1 SET	17.00	SET
04-53A	Headlight Bucket Fiberglass Skin (LH)	63	1	85.00	
04-53B	Headlight Bucket Fiberglass Skin (RH)	63	1	85.00	
04-54	Nylon Washer In Headlight Motor For Drive Gear	63-7	2	4.00	EACH
04-55	Hard Steel Washers In Hdlt Motor For Drive Gear- (1 Curved, 1 Flat)(pr)	63-7	2 PR	4.00	PAIR
04-56A	Headlight Motor Bronze Bearing	63-7	2	7.00	EACH
04-56B	Headlight Motor Bearing Retainer Spring	63-7	2	7.00	EACH
04-56C	Retainer For Headlight Motor Bearing Spring	63-7	2	6.00	EACH
04-57	Headlight Motor Aluminum Bracket Screws (4)	63-7	1 SET	3.00	SET
04-58	HLight Motor Armature Adjusting Stud & Nut	63-7	2	6.00	EACH
04-59A	Front Bracket- Headlight Motor (RH)	63-7	1	55.00	
04-59B	Front Bracket- Headlight Motor (LH)	63-7	1	55.00	
04-60	Long Bolt For Motor To Gear Box	63-7	4	4.00	EACH
04-61	Armature For HL Motor (not Returnable)	63-7	2	80.00	EACH
04-62	HL Motor Plug Socket (white)	63-7	2	20.00	EACH
04-63	Headlight Motor Brushes (1 Pr)	63-7	2 PR	25.00	PAIR

#NEED/CAR – number per car – not in set order 2 for 2...

LH = Driver's Side